

## CHILD RESTRAINT CHECK LIST

Every time a child travels in the vehicle observe the following:

- Use appropriate child restraints.
- Carefully follow the restraint system manufacturer's instructions.
- Adjust the harnesses for every child on every journey.
- Make sure all slack is removed from the adult seat belt.
- Always attach the top tether when installing an ISOFIX seat.
- Always check the security of the child restraint.
- Do not dress a child in bulky clothing, or place any objects/padding between the child and the restraint.
- Regularly check the fit and condition of child restraints. If the fit is poor, or wear/damage is visible renew the restraint immediately.
- Set a good example - always wear your seat belt.

## BOOSTER SEATS

In a situation where a child is too large to fit into a child safety seat but is still too small to safely use just the 3 point belt, a booster seat is recommended for maximum safety. Follow the manufacturer's instructions for fitting and use, then adjust the seat belt to suit.

## ISOFIX ANCHOR POINTS



**Do not attempt to fit ISOFIX restraints to the centre rear seating position. The anchor bars are not designed to hold an ISOFIX restraint in this position.**



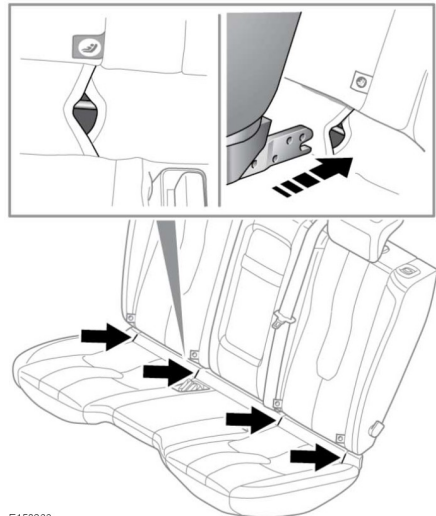
**If the restraint is not correctly anchored, there is a significant risk of injury to the child in the event of a collision or emergency braking.**

Both of the outer seat positions on the rear seat are equipped to accept ISOFIX restraints.



This symbol is shown on a label sewn into the seats to indicate the position of the ISOFIX lower anchorages.

## INSTALLING ISOFIX CHILD RESTRAINTS



E150266

To install an ISOFIX child seat:-

1. Locate the ISOFIX locking mechanism.
2. Slide the child seat into the locking mechanism.
3. If an upper tether is fitted to the child seat, make sure it is properly secured to the upper tether anchorages on the rear of the seats.