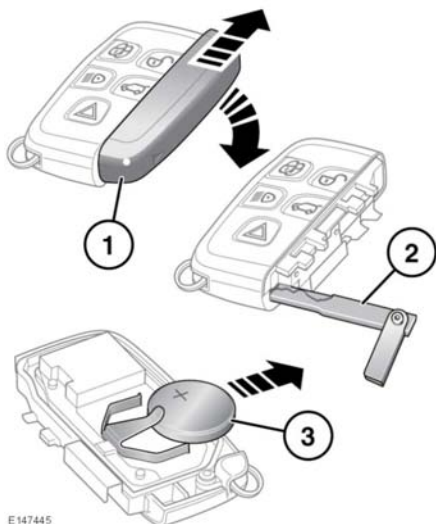


### REMOTE KEY FOB BATTERY REPLACEMENT

When the battery needs replacing, there will be a significant decrease in the effective range and a message will be displayed in the Message centre.



**Battery disposal:** Batteries contain harmful substances and must be disposed of correctly. Seek advice on disposal from a Dealer/ Authorised Repairer and/or your local authority.



To replace the battery:

1. Remove the cover by sliding in the directions of the arrows.
2. Use the emergency key blade to separate the Smart key body.
3. Fit a new and unused CR2032 type battery (available from a Dealer/Authorised Repairer) with the positive (+) side upwards.

**Note:** Avoid touching the new battery. Moisture/oil from fingers can reduce battery life and corrode the contacts.

Refit the parts in reverse order, making sure they click securely into place.