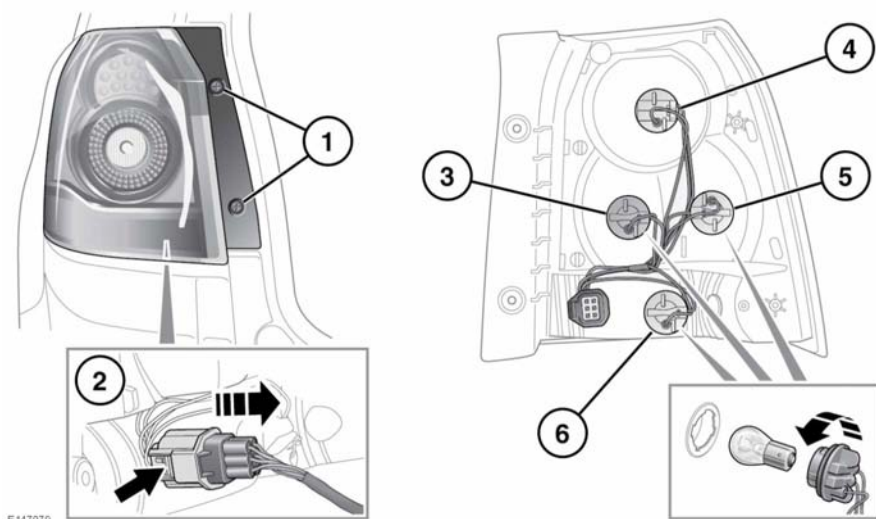


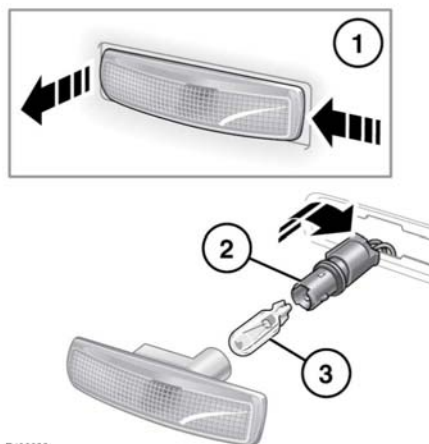
## REAR LAMP BULB REPLACEMENT



1. With the taildoor open, remove the 2 screws from the inner edge of the unit.
2. Pull the unit carefully away from the vehicle, disconnect the electrical connector and remove the unit from the vehicle.
3. Direction indicator.
4. Stop/tail lamp.  
***Note:** This is an LED lamp. Repair or replacement should only be carried out by qualified personnel.*
5. Reversing lamp.
6. Rear fog lamp.

Twist the relevant bulb unit and pull to access the bulb. Push, twist and pull to remove the bulb.

## SIDE REPEATER LAMP BULB REPLACEMENT



1. Carefully slide and pull the side repeater unit away from the vehicle.