
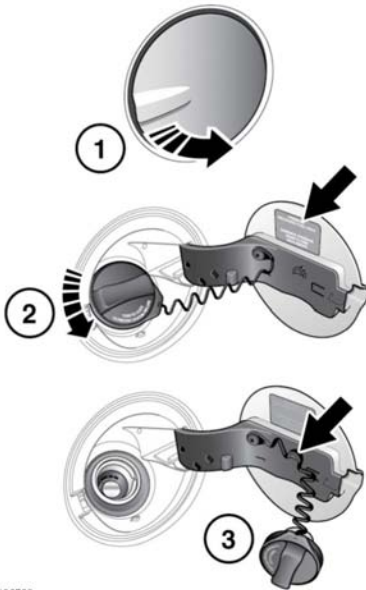


FUEL FILLER FLAP

-  Take note of all warnings and instructions given on the label affixed to the inside of the filler flap.





E136799


The fuel filler flap is located on the right side of the vehicle, at the rear.


1. Make sure the vehicle is fully unlocked, and press the left side of the flap to open.
2. Open the flap fully and twist the cap anticlockwise to undo.
3. Use the retaining clip to keep the filler cap out of the way while fuelling.


FUEL FILLER

-  When refuelling, make sure all of the windows, doors, and the sunroof are fully closed, particularly if young children or animals are in the vehicle.

-  Do not attempt to fill the tank to its maximum capacity. If the vehicle is to be parked on a slope, in direct sunlight, or high ambient temperature, expansion of the fuel could cause spillage.

-  Do not operate the auxiliary heater when refuelling the vehicle. Doing so may cause fuel vapours to combust, causing a fire/explosion.


-  Check the fuel pump information carefully, to make sure you are putting the correct fuel into the vehicle.

-  If the vehicle is filled with incorrect fuel, it is essential that you seek qualified assistance before you start the engine.

Filling station pumps are equipped with automatic cut-off sensing to avoid fuel spillage. Fill the tank until the filler nozzle automatically cuts off the supply. Do not attempt to fill the tank beyond this point.

Note: Filling station pumps used for diesel commercial vehicles, deliver fuel at a higher rate than normal. The higher fill rate can cause premature cut-off and may cause fuel spillage; therefore, it is recommended that only standard light vehicle pumps are used.

DIESEL MISFUELLING PROTECTION DEVICE

-  When the misfuelling device is activated, it may cause fuel to be discharged from the filler neck.

Note: It is the driver's responsibility to fill the vehicle with the correct fuel. The diesel misfuel protection device only reduces the risk of filling the vehicle with the incorrect fuel.

Diesel engine vehicles in some markets are equipped with a misfuelling protection device, incorporated into the fuel filler neck.