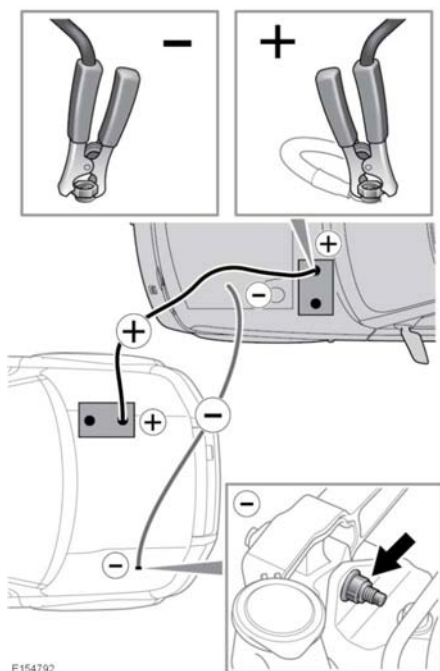


## Vehicle battery



E154792



Switch off all electrical equipment before following this procedure. All electrical equipment must remain switched off until the procedure is complete.



**Exercise extreme caution during this procedure, to avoid contact with any components in the engine compartment that are moving at high speed, carrying high voltage, or are hot.**

1. Connect the positive (Red) jump lead to the positive (+) terminal on the donor vehicle's battery.
2. Connect the other end of the positive jump lead to the positive (+) terminal on the discharged battery.
3. Connect the negative (Black) jump lead to the recommended jump starting earth point of the donor vehicle.

4. Connect the other end of the negative jump lead to the earth point indicated.

**Note:** Check that all cables are clear of any moving components and that all 4 connections are secure.

5. Start the engine of the donor vehicle and allow it to idle for a few minutes.
6. Start the engine of the disabled vehicle.

**Note:** Do not switch on any electrical circuits of the disabled vehicle until after the jump leads are removed.

7. Allow both vehicles to idle for 2 minutes.
8. Switch off the donor vehicle.
9. Disconnect the negative (Black) jump lead from the previously disabled vehicle.
10. Disconnect the negative (Black) jump lead from the donor vehicle.
11. Disconnect the positive (Red) jump lead from the previously discharged battery.
12. Disconnect the positive (Red) jump lead from the donor vehicle.

### CONNECTING A STARTING AID

To start the vehicle using a starting aid or a slave battery, follow the instructions in the sequence given:

1. Connect the positive (Red) jump lead to the positive (+) battery terminal of the discharged battery.
2. Connect the negative (Black) jump lead to the vehicle's earth point.
3. Start the engine and allow it to idle.
4. Disconnect the negative (Black) jump lead from the vehicle's earth point.
5. Disconnect the positive (Red) jump lead from the battery terminal of the vehicle.