

Telephone

CHANGING THE CONNECTED PHONE

Up to 10 mobile phones can be paired with the vehicle in the same way. However, only 1 can be connected and ready for use as a phone at any one time.

To connect a different paired phone to the vehicle, follow the steps below:

1. From the **Home menu**, select **Phone**.
2. A menu will appear. Select **Change phone**.
3. Identify and select your phone from the displayed list.
4. Once your phone is connected to the system, a confirmation message will be displayed before switching to the Digit dial screen.

TELEPHONE SYSTEM ICONS



Connect: Use to send or accept a call and access the Last 10 calls list.



Disconnect: Use to end or reject a call.



No phone connected.



Phone signal strength indicator.



Phone battery level indicator.



Bluetooth: Indicates that a **Bluetooth®** wireless technology device is connected.



Tick: Indicates that a **Bluetooth®** wireless technology device is paired.



Voicemail: Press and hold to dial the stored voicemail number.

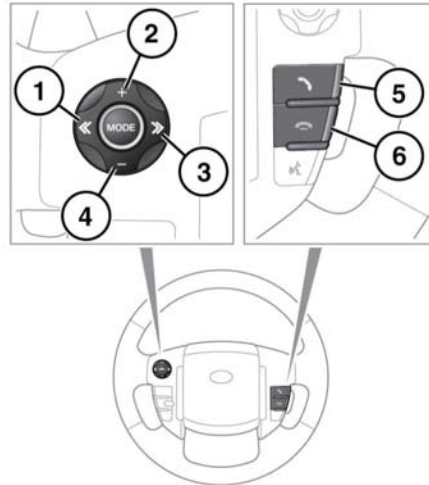


Scroll bar up arrow: Use to scroll up lists of detected phones, calls or phonebook entries.



Scroll bar down arrow: Use to scroll down lists of detected phones, calls or phonebook entries.

STEERING WHEEL CONTROLS



E135926

1. Press to scroll back through received calls, the Last 10 list and finally to exit the list.
2. Increase the volume when in a call, scroll up a displayed list or number listed for a stored contact.
3. Press to scroll to the Last 10 list and received calls.
4. Decrease the volume when in a call, or scroll down a displayed list or number listed for a stored contact.