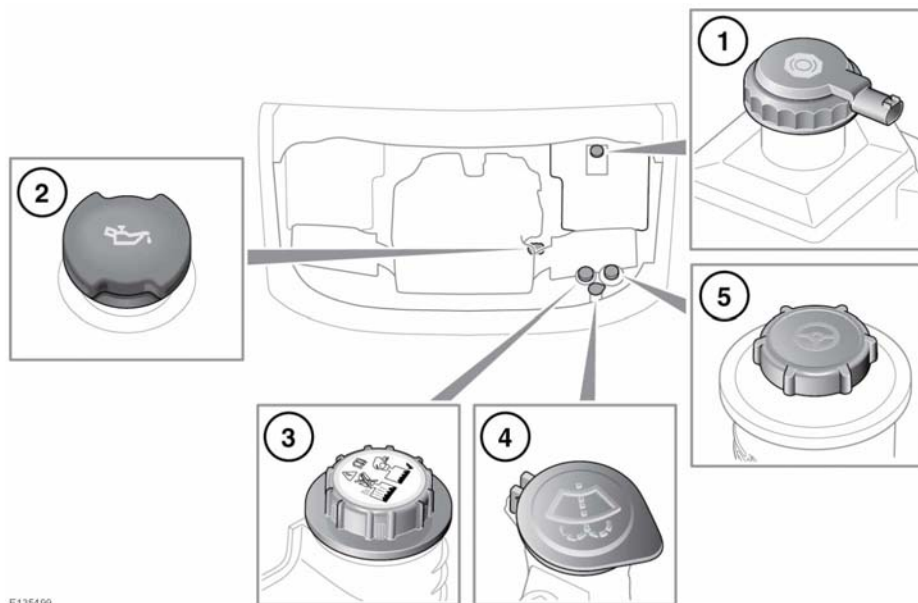


# Fluid level checks

## FLUID FILLER LOCATIONS



E135499

1. Brake fluid reservoir cap.
2. Engine oil filler cap.
3. Engine coolant filler cap.
4. Windshield washer fluid filler cap.
5. Power steering fluid filler cap.

### **⚠ WARNING**

While working in the engine compartment, always observe the safety precautions. See 172, SAFETY IN THE GARAGE.

### **⚠ WARNING**

Do not drive if there is a possibility that leaked fluid will come into contact with a hot surface, such as the exhaust.

## CHECKING THE ENGINE OIL LEVEL

### **NOTICE**

Check the engine oil weekly. If any significant or sudden drop in the oil level is noted, seek qualified assistance.

### **NOTICE**

If the message **ENGINE OIL PRESSURE LOW** is displayed, stop the engine as soon as it is safe to do so and seek qualified assistance. Do not start the engine until the cause has been rectified.

Prior to checking the oil level make sure that:

- The vehicle is on level ground.
- The engine oil has reached working temperature (oil is hot).