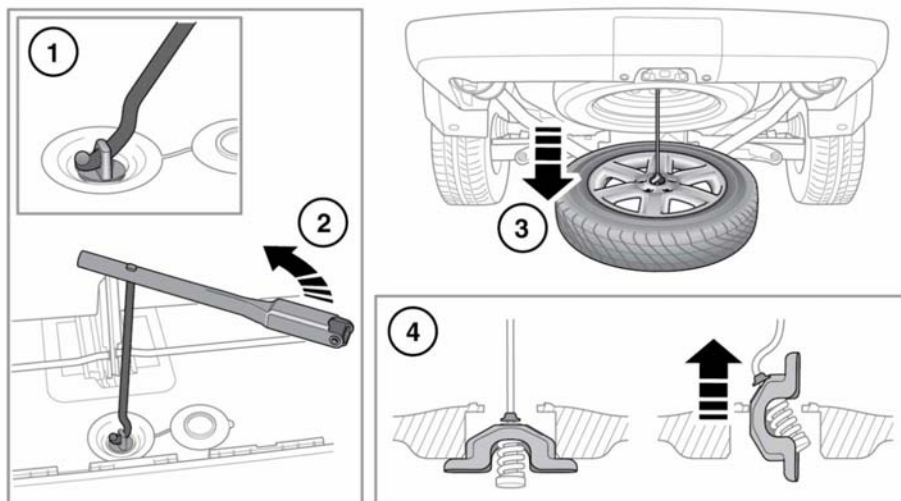


# Wheel changing



E147457

## NOTICE

*Do not use power tools to lower the spare wheel. Doing so may damage the mechanism.*

**Note:** Before removing the spare wheel, take note of its stowage position. The wheel to be changed must be correctly stowed in its place.

1. Fit the jack handle through the hole in the winch spindle.
2. Fit the wheel brace onto the jack handle and rotate counter-clockwise to lower the spare wheel.
3. Continue to turn the wheel hoist winch, until the wheel is on the ground and the hoist cable is slack.

**Note:** Do not attempt to turn the winch past its physical stop.

4. Hold the cable and tilt the lifting lug until it can be passed through the hole in the wheel.

## USING WHEEL CHOCKS

### ⚠ WARNING

**Always chock the wheels using suitable wheel chocks. Place the chocks on both sides of the wheel diagonally opposite the wheel to be changed.**

### ⚠ WARNING

**If jacking the vehicle on a slight slope is unavoidable, place the chocks on the downhill side of the two opposite wheels.**