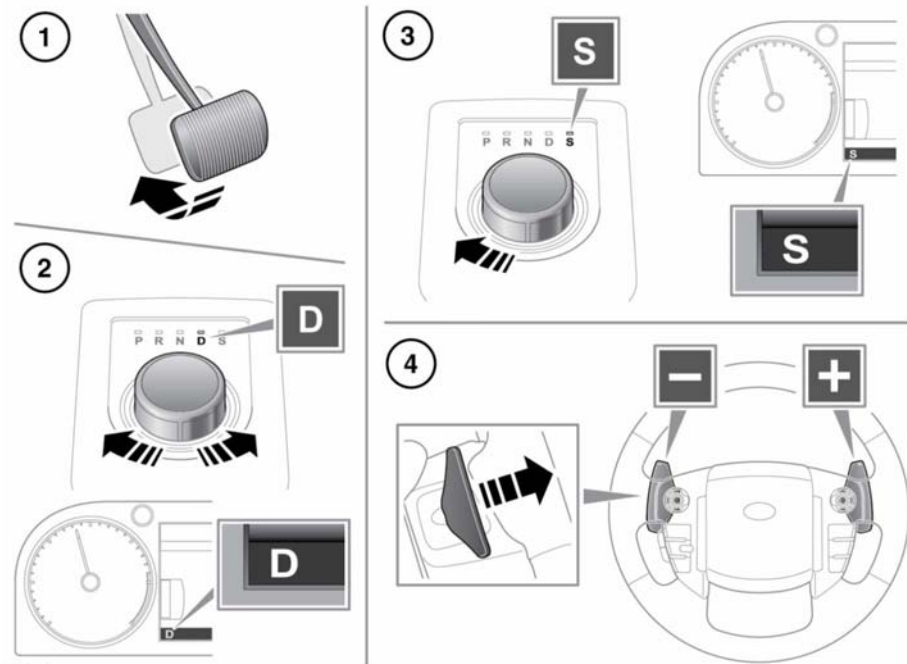


AUTOMATIC TRANSMISSION



1. To select Drive (**D**) when the vehicle is stationary, first apply the brake pedal.
2. With the gear selector, rotate to Drive (**D**). **D** will appear in the Instrument panel and the LED, by the selector, will illuminate.
3. Press the selector down and rotate to **S** to select Sport mode. **S** will appear in the Instrument panel and the LED, by the selector, will illuminate.
4. Manual gear selection (CommandShift™) can be used when Sport (**S**) is selected.

Use the paddles on the steering wheel for gear selection. Pull the left paddle (-) for down-shifts and the right paddle (+) for up-shifts. To return to the fully automatic Sport (**S**) mode, pull the right paddle for 2 seconds.

To return to Drive (**D**) mode, move the selector back to the **D** position.

If the vehicle detects a transmission system fault, a warning message will be displayed in the Message center and only limited gears may become available. Seek qualified assistance immediately.

⚠ WARNING

Park (P) should be engaged and the Electronic Parking Brake (EPB) applied when the vehicle is stationary. The vehicle can move unexpectedly with any other gear position selected, which may result in death or serious injury.

⚠ WARNING

Before exiting the vehicle, always make sure that the gear selector is in the Park (P) position, the engine is turned off, the parking brake is applied and the Smart key is removed from the vehicle.

NOTICE

Do not use auxiliary equipment, such as roller generators that are driven by only one or two wheels of the vehicle, as they will cause failure of the transfer gearbox.

NOTICE

Never select Park (P) while the vehicle is in motion.

NOTICE

Never select Reverse (R) while the vehicle is in forward motion.

NOTICE

Never select a forward gear while the vehicle is in rearward motion.

NOTICE

Do not rev the engine or allow it to run above normal idle speed, while selecting D or R, or while the vehicle is stationary with any gear selected.

NOTICE

While the transmission is set to permanent Manual mode (i.e., using the paddles to change gear while in Sport (S) mode), transmission up-shifts are fully controlled by the driver. This means that the transmission will not change up a gear automatically, even if the engine rev limit is reached.

NOTICE

Do not allow the vehicle to remain stationary for any length of time, with a gear selected and the engine running. Always select P or Neutral (N) if the engine is to idle for a prolonged period.

P should normally be selected before switching off the engine. If any other gear is selected at turn off, the gear selector will move to P before retracting into the center console.

If the engine is switched off with N selected, the system will wait for 10 minutes before selecting P. This time delay allows the vehicle enough time to be conveyed through a car wash.

If the gear selector fails to rotate to P when the engine is switched off, when the engine is next switched on, P must be selected before the engine will start.

In the event of a vehicle breakdown, the transmission will automatically select P. This prevents the vehicle from being towed on all four wheels; therefore, vehicle recovery should only be undertaken by suitably qualified personnel.