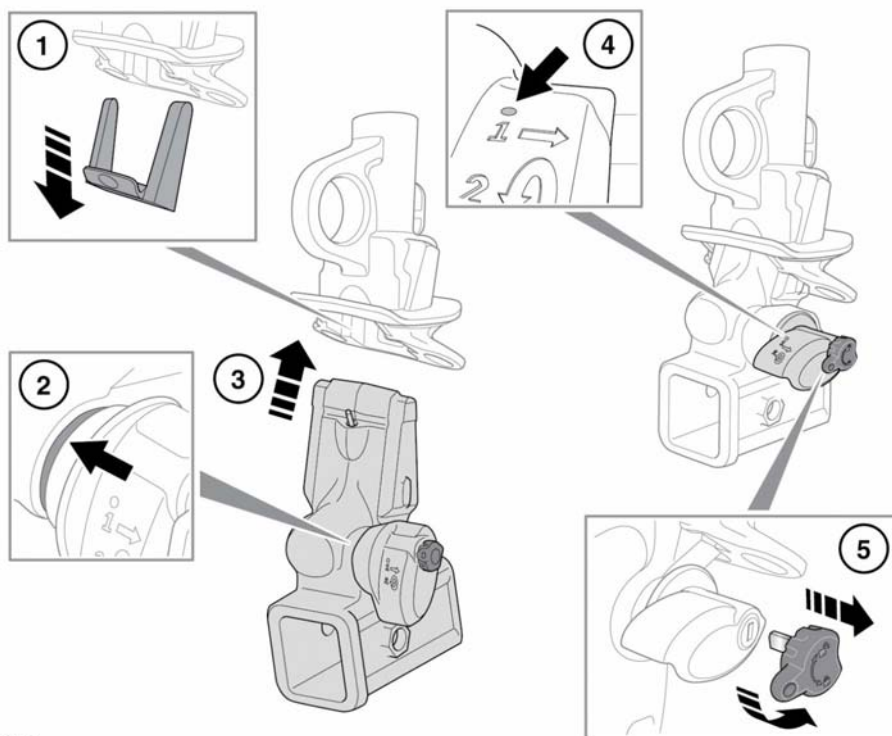


## FITTING THE DETACHABLE TOW HITCH



E134930

1. Remove the protective cover from the tow hitch and stow it in the tow hitch stowage area.
2. The tow hitch can only be installed when the green locking lever is in the unlocked position.
3. Insert the tow hitch into the mounting and push firmly upwards until the tow hitch locks into position.
4. The red marker must be completely covered by the green locking lever.
5. Turn the key counter-clockwise to lock the tow hitch and remove the key before towing.

When the detachable tow hitch is not required for immediate use, it should be removed and stowed in the appropriate place.

## REMOVING THE DETACHABLE TOW HITCH

Removal of the tow hitch is the reverse of fitting.

**Note:** The key cannot be removed when the tow hitch has been detached.