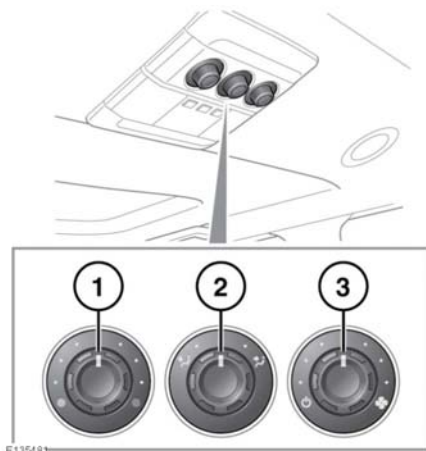


## REAR CLIMATE CONTROL



1. Temperature control: Clockwise rotation increases the temperature.
2. Distribution control: Turn to the relevant icon to direct airflow. The control may be turned to a position between icons to split the airflow between the different vents.
3. Blower control.

**Note:** These controls only operate when the Rear environment button (11) is pressed twice, enabling rear manual operation.