

Fuel and refueling

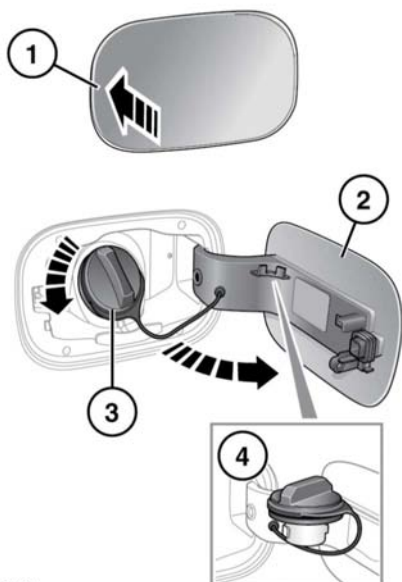
If the vehicle does run out of fuel, a minimum of 1.1 U.S. gallons (4 liters) will be required to restart the engine. The vehicle should be left with the ignition on for 5 minutes after refueling before attempting to restart the engine. The vehicle will need to be driven 1 - 3 miles (1.6 - 5 km) in order to reset the engine management and monitoring systems.

Note: *If the vehicle does run out of fuel, seeking qualified assistance is advisable.*

FUEL FILLER FLAP

⚠ WARNING

Take note of all warnings and instructions given on the label affixed to the inside of the filler flap. Failure to do so may result in injury or death.



E134864

The fuel filler flap is located on the right side of the vehicle, at the rear.

1. Press the left side of the flap to open.
2. Open the flap fully. The label on the inside of the flap indicates the correct fuel to use.
3. Twist the cap counter-clockwise to undo.
4. Use the retaining clip to keep the filler cap out of the way while fueling.

FUEL FILLER

⚠ WARNING

When refueling, make sure that all of the windows, doors, and the sunroof are fully closed, particularly if young children or animals are in the vehicle.

⚠ WARNING

Do not attempt to fill the tank to its maximum capacity. If the vehicle is to be parked on a slope, in direct sunlight or high ambient temperature, expansion of the fuel could cause spillage.

NOTICE

Check the fuel pump information carefully, to make sure that you are putting the correct fuel into the vehicle.

NOTICE

If the vehicle is filled with incorrect fuel, it is essential that you seek qualified assistance before you start the engine.

Filling station pumps are equipped with automatic cut-off sensing to avoid fuel spillage. Fill the tank until the filler nozzle automatically cuts off the supply. Do not attempt to fill the tank beyond this point.