

### REMOTE KEY FOB SYSTEM TRANSMITTERS

#### **⚠ WARNING**

Any person fitted with an implanted medical device should be kept at a distance of at least 8.7 inches (22 cm) away from any transmitter mounted in the vehicle. This is to avoid any possibility of interference between the system and the device. Interference may cause the implanted medical device to malfunction, causing serious injury or death.

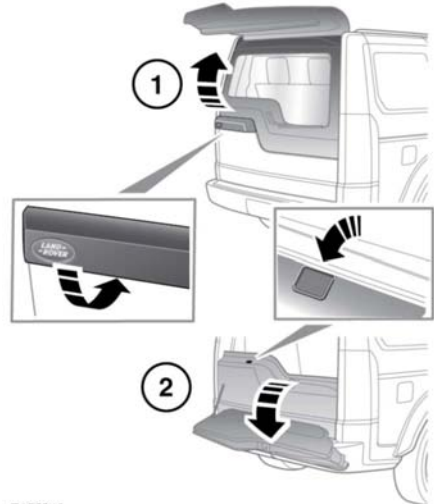
For information concerning the location of the security system transmitters, see 236, **REMOTE KEY FOB TRANSMITTER LOCATIONS**.

### DRIVE-AWAY LOCKING

Drive-away locking automatically locks all of the doors when the vehicle is in motion. This feature can be enabled/disabled via the Vehicle Set-up menu, see 48, **INSTRUMENT PANEL MENU**.

**Note:** Pressing the lock or unlock button on the Smart key will override Drive-away locking for the current trip.

### OPENING AND CLOSING THE TAILGATE



#### **NOTICE**

Make sure there is minimum space of 3 feet (1.0m) above the rear of vehicle, before operating the tailgate. Insufficient space may result in damage to the vehicle.

#### **NOTICE**

Do not operate the tailgate if a cycle rack is fitted to the tailgate. Remove any cycles and/or racks before operating the tailgate.

**Upper tailgate:** Unlock the vehicle and press the touchpad (1) on the underside of the exterior handle. Pull the tailgate upwards to open.

**Lower tailgate:** With the upper tailgate open, press the touchpad on the lower tailgate waist moulding (2). Lower the tailgate to open.