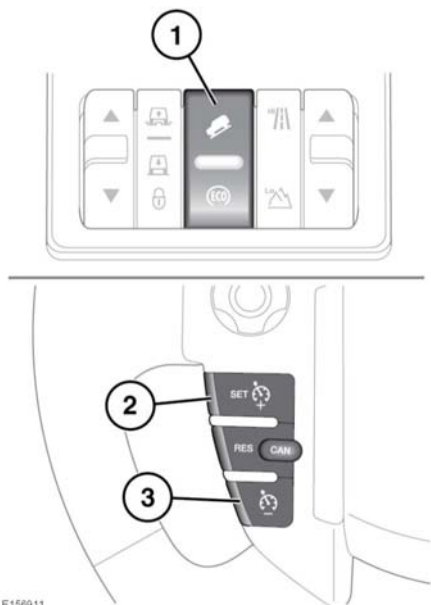


# Hill descent control (HDC)

## HDC CONTROLS



E150911

Hill Descent Control (HDC) is designed to restrict vehicle speed to a set limit when traveling downhill.

### **⚠ WARNING**

**Do not attempt a steep descent if HDC is inoperative or warning messages are displayed.**

1. **HDC on/off.**  
HDC can be selected at speeds below 50 mph (80 km/h) but will only operate at speeds of less than 31 mph (50 km/h). HDC can be used in Drive (**D**), Reverse (**R**) and all CommandShift gears. When in **D**, the vehicle will select the most appropriate gear.

**Note:** *HDC is automatically selected by some of the Terrain response special programs.*

If the system's operation criteria have not been met, the HDC warning lamp will flash to indicate that the system has been selected but is not operating. See **53, HILL DESCENT CONTROL (GREEN)**.

If HDC is deselected while operating, the lamp will flash and the system will fade out, allowing the vehicle's speed to gradually increase.

If HDC is already selected and the vehicle speed exceeds 31 mph (50 km/h), HDC is suspended. The HDC indicator will flash and a message will appear in the Message center.

If the vehicle's speed exceeds 50 mph (80 km/h), HDC will disengage and the HDC lamp will extinguish.

If the brake pedal is pressed when HDC is active, a pulsation might be felt through the brake pedal. When the brake pedal is released, HDC will resume.

**Note:** *HDC is automatically deselected if the ignition is switched off for more than 6 hours.*

2. **Increase the descent speed.**

**Note:** *Vehicle speed will only increase on a slope steep enough to increase momentum. Use of the + switch may; therefore, not increase vehicle speed on a gentle slope. The accelerator can also be used to increase speed, up to the predetermined maximum speed of each gear.*

3. **Decrease the descent speed.**  
Each gear has a predetermined minimum speed.

If a fault is detected in the HDC system, **HDC FAULT SYSTEM NOT AVAILABLE** will appear in the Message center and HDC assistance will fade out.