

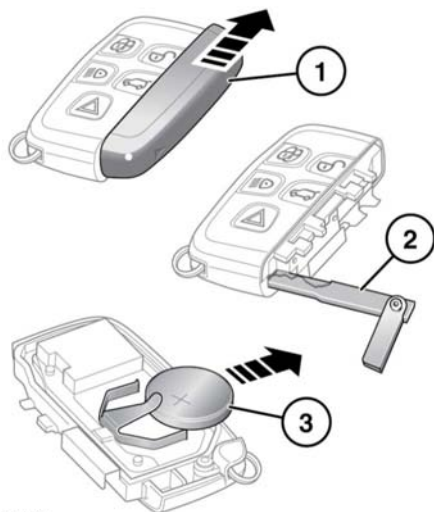
## Entering the vehicle

### REMOTE KEY FOB BATTERY REPLACEMENT

When the battery needs replacing, there will be a significant decrease in the effective range and the message **SMART KEY BATTERY LOW** will be displayed in the Message center.



**Battery disposal:** Used batteries must be disposed of correctly, as they contain harmful substances. Seek advice on disposal from your Retailer/Authorized Repairer and/or your local authority.



E135421

To replace the battery:

1. Slide the cover in the direction of the arrow, until a click is heard. Remove the cover.
2. Use the emergency key blade to separate the Smart key body.
3. Fit a new CR2032 type battery (available from your Retailer/Authorized Repairer), with the positive (+) side upwards.

**Note:** Avoid touching the new battery, as moisture/oil from fingers can reduce battery life and corrode the contacts.

Refit the parts in reverse order, making sure that they click securely into place.