

Telephone

Note: Due to the duration of a **Bluetooth®** wireless technology device search, it is advised that the time out to home screen feature is switched off before attempting to search for devices. This setting can be changed from within the vehicle **Set-up** menu, accessed from the Touch screen Home menu.

CHANGING THE CONNECTED PHONE

Up to 10 cell phones can be paired with the vehicle in the same way. However, only 1 can be connected as a phone at any 1 time.

To connect a different paired phone to the vehicle, follow the steps below:

1. From the **Home** menu, select **Phone**.
2. A menu will appear. Select **Change phone**.
3. Identify and select your phone from the displayed list.
4. Once your phone is connected to the system, a confirmation message will be displayed before switching to the Digit dial screen.

TELEPHONE SYSTEM ICONS



Connect: Use to send or accept a call and access Last 10 calls list.



Disconnect: Use to end or reject a call.



No phone connected.



Phone signal strength indicator.



Phone battery level indicator.



Bluetooth. Indicates that a **Bluetooth®** wireless technology device is connected.



Tick. Indicates that a **Bluetooth** wireless technology device is paired.



Voicemail. Press and hold to dial the stored voicemail number.

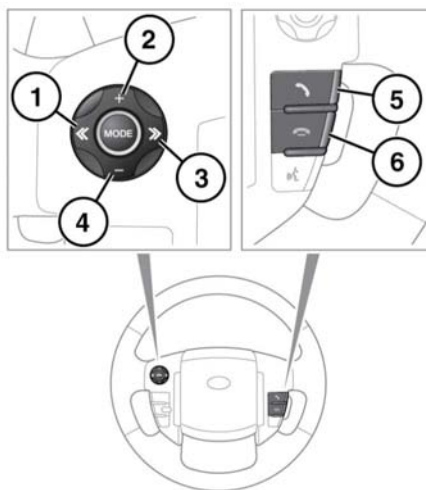


Scroll bar up arrow. Use to scroll up lists of detected phones, calls, or phonebook entries.



Scroll bar down arrow. Use to scroll down lists of detected phones, calls, or phonebook entries.

STEERING WHEEL CONTROLS



E135926

1. Press to scroll down through a displayed list.
2. Press to increase the volume, when in a call.
3. Press to scroll up through a displayed list.