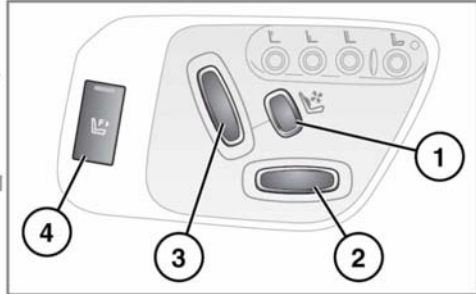
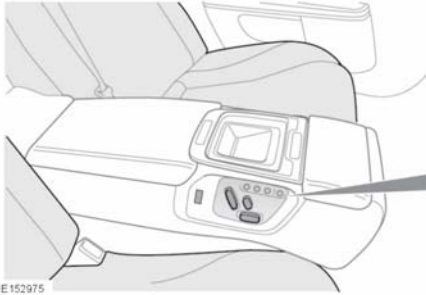


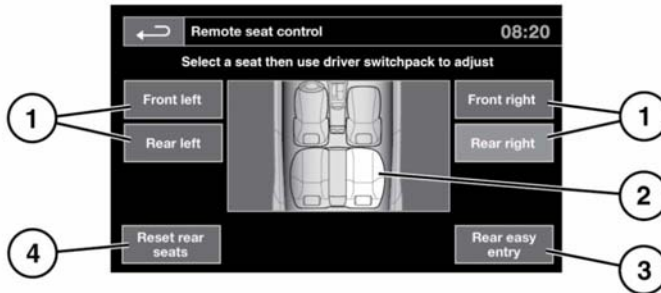
# Rear seats

## EXECUTIVE CLASS SEATS



1. Lumbar support adjustment.
2. Forward and rearward seat adjustment.  
**Note:** This is a 4-way switch when used to operate the front passenger seat. The switch is then used to adjust the forward and backward movement plus the raising and lowering of the seat. See item (4).
3. Seatback angle adjustment.
4. Front passenger seat adjustment: Press to select and then use switches (2) and (3) to make the required adjustments.

## REMOTE SEATS

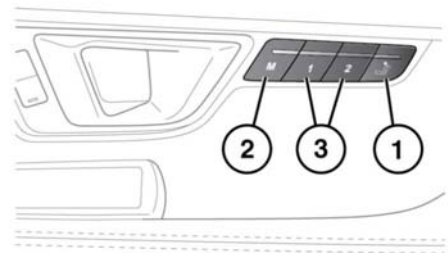


E153590

The front and rear passenger seats can be controlled by the driver. To select the **Remote seat control** menu, touch **Remote seats** on the **Front climate** menu, see **75, FRONT CLIMATE CONTROL**.

1. Touch to select the seat to be adjusted. Once selected, the driver can adjust the seat using his seat adjustment controls on the side of the seat.
2. This highlights the selected seat to be adjusted.
3. **Rear easy entry**: Touch to turn Rear easy entry on/off. When on is selected, the rear seats will automatically move to the home position when a rear door is opened to allow easier entry and exit.
4. **Reset rear seats**: Touch to enable the memory button 3 on the driver's side to be used to reset the rear seat to the home position. See **15, DRIVING POSITION MEMORY**.

## REAR SEAT POSITION MEMORY



E152976

1. Press and hold the switch to return the rear seat to its home position to allow easier entry and exit.
2. Memory set button.
3. Memory presets.

Once you have adjusted the rear seats (see **18, EXECUTIVE CLASS SEATS**) the vehicle can memorize these settings using the rear seat memory buttons.

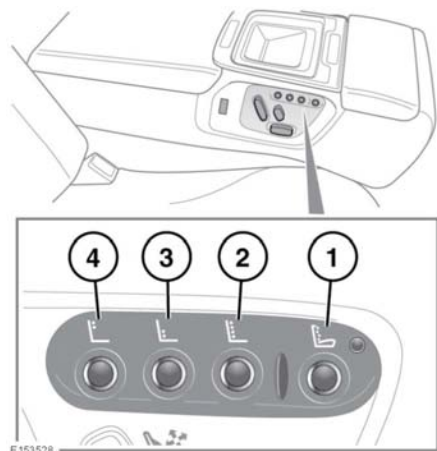
1. Press the memory set button to activate the memory function.
2. Press one of the preset buttons within 5 seconds to memorize the current settings.

# Rear seats

A seat position can only be memorized during the 5 second period.

Any existing settings for a memory preset will be over-written when programing a memory position.

## REAR SEAT MASSAGE



1. Massage: Press to turn the massage function on/off.
2. Press to select rolling wave.
3. Press to select lumbar wave.
4. Press to select shoulder wave.

**Note:** The massage programs have a specific timed cycle, which will need to be re-selected for continuous use.

The rear seat massage can also be set via the touch screen, see 78, SEAT MASSAGE.

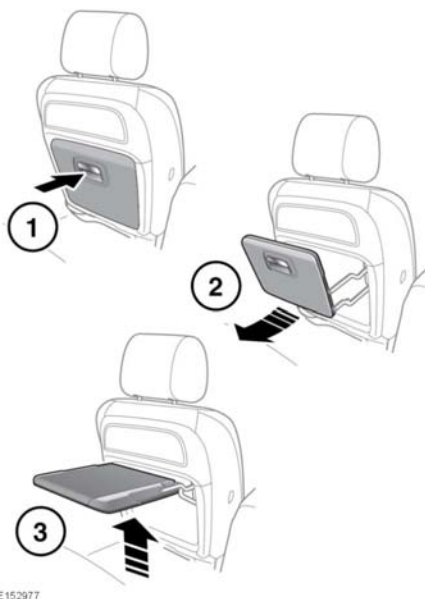
## FOLDING TABLE

### **⚠WARNING**

If the vehicle is involved in an accident, or subject to sudden braking or direction change, loose items can cause serious injury.

### **⚠WARNING**

Stow the table when not in use.



To open the table: Pull the table by the handle (1) and then pull the underneath front edge of the table (2) to guide it in to it's final horizontal position (3).

To close the table: Pull the front edge underneath of the table down and then push the table into the closed position.

## REAR SEAT SAFETY

### **⚠WARNING**

Never allow passengers to travel in the luggage compartment under any circumstances.

### **WARNING**

All vehicle occupants should be seated correctly and wear a seat belt at all times when the vehicle is in motion. Failure to do so could result in serious injury or death in the event of a collision.