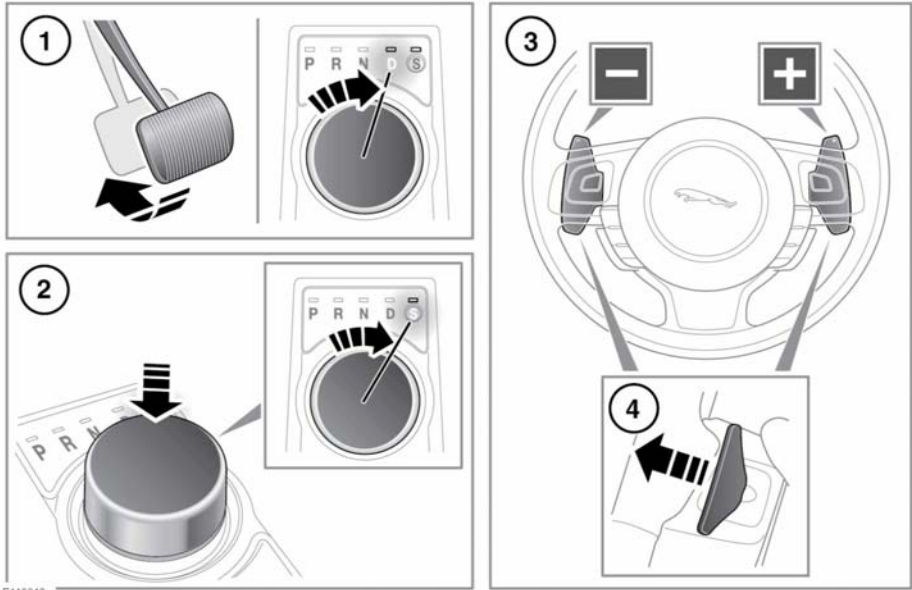


## AUTOMATIC TRANSMISSION



1. To select Drive (**D**) or Reverse (**R**) gear, press the brake pedal and rotate the rotary drive selector.
2. To select Sport mode, from **D** press the rotary drive selector down and rotate to **S**.
3. Manual mode gear shift paddles (left paddle for downshifts, right paddle for upshifts), see **92, MANUAL GEAR SELECTION**.  
**Note:** The gear shift paddles can be configured to operate in '**S only**' or '**D and S**' via the Vehicle Set-up menu, see **45, INSTRUMENT PANEL MENU**. See **92, MANUAL GEAR SELECTION** for initial vehicle set-up.
4. Pull briefly to change gear when in manual mode.

**Note:** The availability of Manual mode is dependent on vehicle set-up. See **92, MANUAL GEAR SELECTION**.

**Note:** The selected gear will be displayed in the Instrument panel, also see **94, DYNAMIC MODE**.

### **NOTICE**

Never select the Park (**P**) position while the vehicle is in motion. Doing so can result in serious transmission damage.

### **NOTICE**

Never select the Reverse (**R**) position while the vehicle is in forward motion. Doing so can result in serious transmission damage.

## **NOTICE**

*Never select a forward gear while the vehicle is moving backwards. Doing so can result in serious transmission damage.*

## **NOTICE**

*Do not rev the engine or allow it to run above normal idle speed while selecting D or R, or while the vehicle is stationary with any gear selected. Doing so can result in serious transmission and/or engine damage.*

## **NOTICE**

*Do not allow the vehicle to remain stationary with a drive gear selected and the engine running. Always select Park (P) or Neutral (N) if the engine is to idle for a prolonged period. The vehicle may move unexpectedly with any other gear position selected.*

If the rotary drive selector is obstructed, remove the obstruction and then start the engine. The selector should elevate.

If the rotary drive selector fails to elevate and there is no obstruction, a fault in the system is indicated. The selector can be used in the lowered position, but be aware that it will not automatically select **P** when the engine is switched off. Therefore **P** should be selected manually. The fault should be rectified by a Dealer/Authorized Repairer at the earliest opportunity.

## **MANUAL GEAR SELECTION**

On delivery the manual gear selection gear shift paddles may be set to operate as follows:

- 5.0L Supercharged: Gear shift paddles set to operate in both '**D and S**' modes.
- 3.0L Supercharged: Gear shift paddles set to operate in '**S only**' mode.

If required the operating mode can be reconfigured so that the gear shift paddles operate in '**S only**' or '**D and S**'. Reconfigure via the Vehicle Set-up menu, see **45, INSTRUMENT PANEL MENU**.

**Operation:** When in Manual mode, pull the left paddle to shift down a gear or the right paddle to shift up a gear.

There are 2 methods of exiting manual mode:

1. Pull and hold the right paddle for approximately 1 second to return directly to automatic operation.
2. Rotate the gear selector from **S** to the **D** position.

**Temporary manual gear selection** (unless set to operate in '**S only**' mode): When the rotary drive selector is in the **D** position, Manual mode may be directly accessed by the single action of operating the steering wheel mounted shift paddles.

If continued use of Manual mode is required, the rotary drive selector may be subsequently moved to the **S** position to enter permanent Manual mode.

If the rotary drive selector remains in the **D** position, temporary manual mode will be held while the driver is accelerating, decelerating, cornering or continuing to request shifts via the paddles.

## **NOTICE**

*When the transmission is set to permanent manual mode (i.e. using the paddles to change gear while in Sport mode) and Dynamic mode is selected (see **94, DYNAMIC MODE**), transmission up-shifts are fully controlled by the driver. This means that the transmission will not change up a gear automatically, even when the vehicle's rev limit is reached.*

## ROTARY GEAR SELECTOR

### WARNING

**Park (P) should be engaged and the parking brake applied when the vehicle is stationary. The vehicle can move unexpectedly with any other gear position selected, which may result in death or serious injury.**

**Before exiting the vehicle, always make sure that the gear selector is in the Park (P) position, the engine is turned off, the parking brake is applied and the Smart key is removed from the vehicle.**

The rotary drive selector elevates out of the center console when the engine is started, in readiness for gear selection.

**P** should be selected before switching off the engine. However, it is possible to switch the engine off with **R**, **D** or **S** selected - the selector will automatically select **P**, while retracting into the center console.

**Note:** *If the engine is switched off with **N** selected, the system will wait for 10 minutes before selecting **P**. This procedure is to allow the vehicle to be conveyed through a car wash only and should not be used for vehicle recovery purposes.*

To prevent the transmission from automatically selecting **P** (e.g. for vehicle recovery purposes) it is necessary to activate the Emergency park release. Vehicle recovery should only be undertaken by qualified personnel.

## LIMP-HOME MODE

**Note:** *The driver should be aware that the vehicle's performance will be reduced and must take this into account when driving. Also the use of the gear shift paddles will be disabled. In this event, seek qualified assistance as soon as possible.*

In the event of an electrical or mechanical failure, transmission operation will be limited. **P**, **R**, **N**, **D** and **S** may still be used to enable the vehicle to be driven to a safe area.

Some faults will cause the selector to be locked in position until the ignition is switched off. If the selected range flashes, it signifies that the driver request cannot be engaged. Re-select **N** and repeat the attempt.

If the transmission is still unable to select the requested gear, contact your Dealer/Authorized Repairer.