

## TOWING EYES

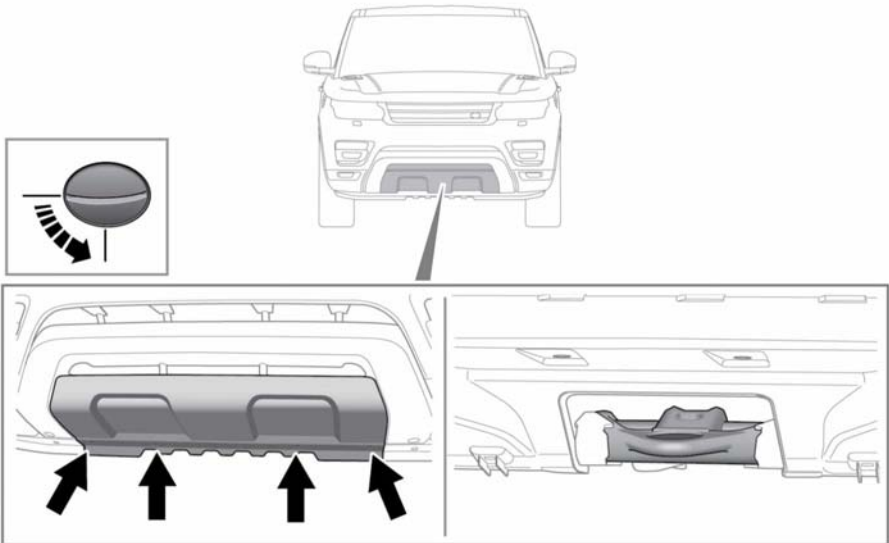
### **⚠ WARNING**

The towing points at the front and rear of the vehicle are designed for on-road recovery only. If they are used for any other purpose, it may result in vehicle damage and serious injury.

### **NOTICE**

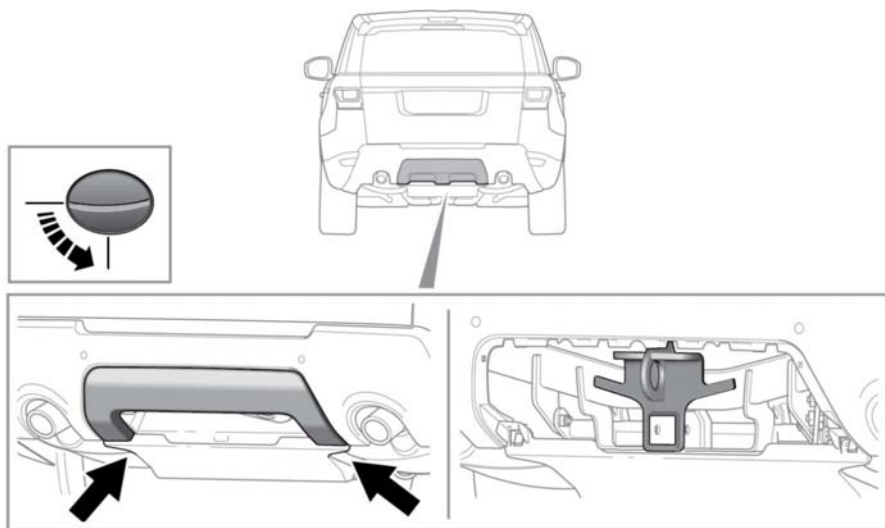
Remove the front and rear towing eye covers before driving off-road, to prevent damage or loss.

The front and rear towing points are located behind removable covers.



E151143

1. To release the front cover, rotate each of the fasteners 90 degrees counter clockwise with a coin (or similar).
2. To remove the cover, lower the top edge and then pull the cover forward. When refitting, first make sure the 2 lugs at the bottom edge of the cover engage with the holes in the body panel then secure in position by rotating each of the fasteners 90 degrees clockwise.



E151832

1. To release the rear cover, rotate each of the fasteners 90 degrees counter clockwise with a coin (or similar), to release the lower edge.
2. Rotate the cover to release the hooks at the top. Remove the cover.
3. When refitting the rear cover, make sure the 4 hooks on the top edge of the cover engage in the body panel then secure in position by rotating each of the fasteners 90 degrees clockwise.

The rear towing point may be used to tow another vehicle if required.

## OFF-ROAD RECOVERY

### **⚠ WARNING**

If the towing points are to be used for off-road recovery, it is essential that off-road driver training covering recovery techniques is undertaken.

Further information regarding off-road driver training can be found at <http://www.landroverexperience.com>

## TRANSPORTING THE VEHICLE

The recommended method for recovery/transporting the vehicle is by trailer designed for that purpose.

Always use qualified persons to perform recovery and to make sure the vehicle is secured correctly.

### **⚠ WARNING**

Use extreme caution when moving or towing the vehicle. Death or serious injury may occur.

### **NOTICE**

If the vehicle electronics are operational, the air suspension must be set to access height, before securing the vehicle to a recovery vehicle or trailer. See **110, ACCESS HEIGHT**.

## TOWING THE VEHICLE ON FOUR WHEELS

The vehicle should be recovered with all four wheels clear of the ground, i.e., on a trailer. However, if the vehicle cannot be recovered by using the correct method, in an emergency the vehicle can be towed on all four wheels for a short distance. Please adhere to the following guidelines.

### **⚠ WARNING**

The recovery agent **MUST activate the Emergency Park Release before towing commences. This procedure is covered in a separate publication for service personnel.**

### **⚠ WARNING**

**If transmission Neutral (N) is selected and the engine is then switched off, the transmission will wait for 10 minutes before automatically selecting Park (P). At this point if the Emergency Park Release has not been activated and the vehicle is being towed, serious damage to the transmission will result. There is also a danger to personal safety.**

### **⚠ WARNING**

**If the engine cannot be used during towing, there will be no power assistance to the braking system. This will result in much greater effort to stop the vehicle and in a greatly increased stopping distance.**

### **NOTICE**

*Only tow the vehicle in a forward direction with all four wheels on the ground. Towing in a reverse direction or with only two wheels on the ground, will cause serious damage to the transmission.*

### **NOTICE**

*Do not tow the vehicle for more than 30 miles (50 km). Do not exceed 30 mph (50 km/h). Towing for a greater distance or at a higher speed may result in serious damage to the transmission.*

### **NOTICE**

*Do not tow the vehicle if the transmission cannot be set in Neutral (N), or if the rear electronic differential has failed in the locked position.*

The following procedure must be carried out carefully to prevent damage to the vehicle:

1. Secure the towing attachment from the recovery vehicle to the front towing eye.**251, TOWING EYES**
2. With the parking brake applied, switch on the ignition.
3. Apply the foot brake and rotate the selector to Neutral (N).
4. Activate the Emergency Park Release.
5. Switch off the ignition and leave the Smart key in a secure place inside the vehicle.
6. The ignition may be switched on to allow operation of turn signals, brake lamps etc.
7. Release the parking brake before towing the vehicle.

### **NOTICE**

*Leaving the ignition switched on for extended periods will drain the vehicle battery.*

## AFTER TOWING ON FOUR WHEELS

1. Apply the parking brake.
2. Switch on the ignition and apply the foot brake.
3. Rotate the gear selector to Park (P).

## Vehicle recovery

4. Deactivate the Emergency Park Release.
5. Switch off the ignition and remove the Smart key from the vehicle.
6. Remove the recovery vehicle towing attachment from the front towing eye and refit the cover.

### **WARNING**

**Use extreme caution when detaching towing equipment. Vehicle movement is possible which can result in serious injury.**