

PARK ASSIST

Park assist is an aid to parallel parking in tight parking slots. For the system to operate correctly, your vehicle must be parallel to a line of parked vehicles along which you intend to search for a parking space. Your front wheels must be in the straight ahead position. Parking on a bend may cause the system to miscalculate distances.

When the sensors detect a space sufficient to park in, instructions will be displayed in the Message centre.

The actual parking manoeuvre is controlled by the vehicle's steering, without your hands on the steering wheel. The Message centre will tell you when the steering wheel must be released.

The driver must maintain full control of the accelerator and brakes throughout the manoeuvre.



Park assist is a driving aid only. It remains the driver's responsibility to drive with due care and attention during parking manoeuvres.



Park assist will not detect moving objects, such as children and animals, until they are dangerously close. Always use extreme caution when manoeuvring.



Park assist sensors may not detect some obstructions, e.g., narrow posts, small objects close to the ground, mesh fences and, in some circumstances, bicycles or motor cycles parked alongside the kerb.



All sensors must be kept clean and free from debris or obstructions, e.g., ice, frost, snow, leaves, mud or insects. Failure to keep the sensors clean may result in sensor miscalculation or false indications.



Park assist must not be used if:

- A temporary spare wheel is in use.
- A sensor is damaged, or the bumper is damaged sufficiently to affect a sensor mounting point.
- A sensor is obstructed by items attached to the vehicle, e.g., bumper covers, a bicycle rack, a trailer, stickers, etc.
- The vehicle is being used to transport a load that extends beyond the vehicle's perimeter.



Park assist will not be available if a trailer is connected.

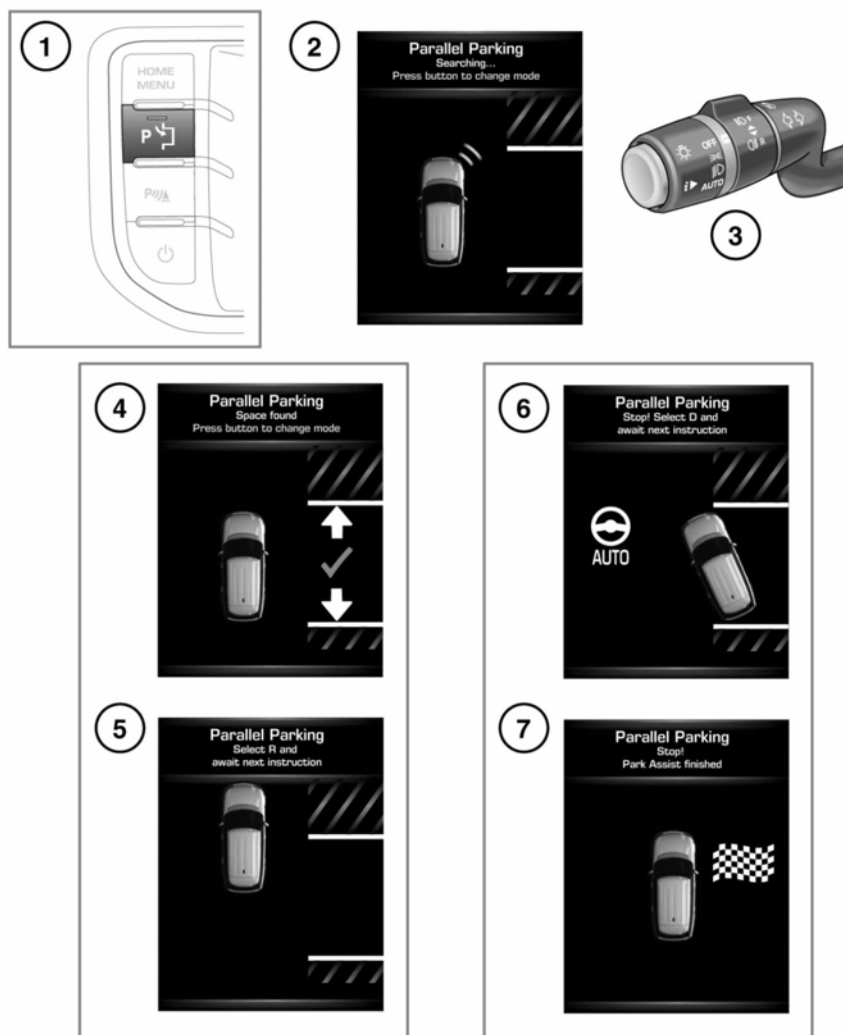
Note: All of the doors and tailgate should be securely closed.

Note: During any Park assist manoeuvre, the Parking aid system will remain active and will sound when objects are detected near the vehicle.

Note: A parking manoeuvre can be cancelled at any point by holding/turning the steering wheel or by pressing the Park assist button.

Note: In a situation where the rows of parked vehicles on either side of the road are close enough for Park assist to sense them and Park assist determines that there is not enough manoeuvring space for reverse parking, the space will be rejected, even if the driver believes the space is large enough to park the vehicle. The driver retains the option to switch off Park assist and to attempt the parking manoeuvre manually.

Park assist



E153606

1. To activate, press the Park assist button while driving forwards at less than 18 km/h (11 mph). The Park assist button indicator will illuminate.

Auto searching is active while the vehicle's speed is below 30 km/h (18 mph). When Park assist is activated, a previous space may already be located and can be displayed in the Message centre. To obtain a previous space on either side, signal a turn in that direction and press the Park assist button.

Note: *If the vehicle's speed exceeds 30 km/h (18 mph), Park assist will deactivate and the Parking assist button indicator will extinguish. If Park assist is selected while the vehicle is travelling between 18 km/h (11 mph) and 30 km/h (18 mph), the message **Parallel Park Maximum Speed 30 kph** will be displayed.*

2. When first activated Park assist searches for a space on the front passenger side of the vehicle. To search for a space on the driver's side, signal a turn in that direction.
3. The Park assist display appears in the Message centre and shows the **Searching** message and graphic. All messages and instructions are displayed here. Take action when the text or audio alerts an instruction. As you drive forward, the size of potential parking spaces are assessed and displayed graphically.

Note: *For Park assist to search effectively, maintain a distance of 0.5 to 1.5 metres (1.6 to 4.9 ft) between your vehicle and the line of parked vehicles/obstacles in which you want to park.*

4. A short confirmation tone is given when a suitable space is found and the message **Space found** will be displayed. Next, the message **Drive forward** or **Stop! and release wheel** will be given, depending on the vehicle's current position.



Make a visual check before starting the reversing manoeuvre to make sure the space has not changed in any way.

5. When the vehicle is at a standstill an instruction to **Select R and await next instruction** will be given. Park assist will then take control of the vehicle's steering system and the steering wheel must be released. Release the foot brake carefully to move the vehicle slowly into the parking space. Follow the instructions in the message centre.



The driver must maintain full control of the accelerator and brakes throughout the manoeuvre.



Do not move the vehicle until the message **Parallel Parking. Reverse with care** appears in the Message centre.

Note: *If the steering wheel is manually turned while Park assist has control of the steering, Park assist will deactivate, Park assist will deactivate and the Park assist button indicator will extinguish.*

Note: *Park assist can be reactivated by pressing the Park assist button and the previous parking manoeuvre will be resumed. The Message centre will advise if automated steering can be resumed.*

Note: *If the vehicle's speed exceeds 5 km/h (3 mph) during the parking manoeuvre, Park assist will display the message **Parallel Parking Maximum Speed 4 mph** until speed decreases to less than 5 km/h (3 mph). If the vehicle's speed exceeds 7 km/h (4 mph), Park assist will deactivate and the indicator lamp in the Park assist button will extinguish.*

6. If further manoeuvring is required in the parking space, follow the instructions, **Stop! Select D and await next instruction** or **Stop! Select R and await next instruction** displayed in the Message centre.
7. When the parking manoeuvre is complete, **STOP! Park Assist finished** will be displayed.

If a system fault is detected, a continuous tone will sound and a message will be displayed in the Touch screen. Contact your Dealer/Authorised Repairer as soon as possible.

PARK ASSIST LIMITATIONS



Park assist is a supplement to, and not a replacement for, good observation and a safe driving style. It is the driver's responsibility, at all times, to make sure that reversing manoeuvres are carried out safely.

Park assist may provide inaccurate results if:

- The size or shape of the parking spaces changes after it was measured.
- There is an irregular kerb alongside the parking space or the kerb is covered with leaves, snow etc.
- The vehicle is being used to transport a load that extends beyond the perimeter of the vehicle.
- The vehicle had a repair or alteration that was not approved by a Land Rover Dealer/Authorised Repairer.
- The vehicle has been fitted with non approved wheels or tyres or there is significant tyre wear.
- One of the parked vehicles has an attachment at a raised height such as a flat bed, snow plough or cherry picker.

- The parking space is located on a corner or curve.
- The sensors are dirty or covered in mud, ice or snow.
- The weather is foggy, raining or snowing.
- The road surface is bumpy such as gravel.
- A tow bar or trailer hitch is fitted.
- A trailer is connected.

Note: *If a trailer is connected to a Land Rover approved trailer socket, the Park assist system will be disabled.*

- It encounters an obstruction that is thin or wedge shaped.
- It encounters an obstruction that is elevated and/or protruding, such as ledges or tree branches.
- It encounters an obstruction with corners and sharp edges.

PARK ASSIST TROUBLESHOOTING

Park assist is not searching for a parking space:

- The system may not be activated.
- The vehicle may be travelling above 30 km/h (18 mph).
- The sensors may be covered or partly obscured by dirt, mud, ice or snow.

Park assist does not offer a certain parking space:

- The sensors may be covered or partly obscured by dirt, mud, ice or snow.
- The space may not be large enough or there may not be enough space on the opposite side of the vehicle for the front to swing out during the manoeuvre.
- The vehicle may have been driven too far away (more than 1.5 metres [5 feet]) from the row of parked vehicles.

- The vehicle may have been driven too close (within 41 cm [16 inches]) to the row of parked vehicles.
- The vehicle may have been driven in reverse. Park assist will only search for a parking space when the vehicle is in Drive (D).
- The approach angle may not be suitable.

Park assist has not positioned the vehicle accurately within the space:

- 1 or more of the system limitations criteria may have been met. See **122, PARK ASSIST LIMITATIONS**.