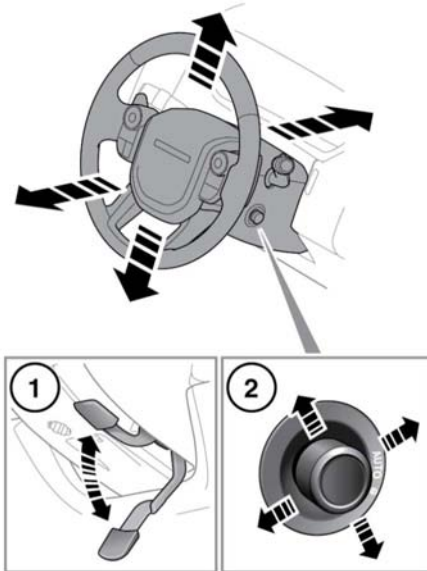


ADJUSTING THE STEERING WHEEL



E149770



Never adjust the steering column while the vehicle is in motion.

1. **Manual adjustment:** Move the locking lever (located under the column) downwards to unlock. Move the steering column up, down, in or out, to the desired position. Move the lever fully up to re-lock the column.
2. **Electric adjustment:** Move the control up or down to adjust the tilt/height. Move the control forwards or rearwards to adjust reach.

ENTRY AND EXIT MODE

With the steering column control (2) in the **AUTO** position, the steering column and driver's seat will move to provide easier entry and exit from the vehicle.

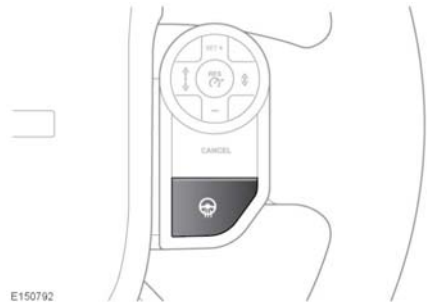
On opening the driver's door, the system will raise the steering column to the highest position and lower the driver's seat to a lower position, assisting with exit from the vehicle. When the driver's door is closed and the ignition turned on, the system will return the driver's seat and steering column to the previous position.

Note: If the driver's seat or steering column are adjusted during entry or exit operation, automatic movement will stop.

To prevent automatic movement of the driver's seat and steering column, turn the control clockwise to the manual position.

Note: If the steering column switch is moved away from **AUTO** when the driver's seat and steering column is in the exit position, the driver's seat and steering column will move back to their previous positions when the driver's door is closed and the ignition is switched on.

HEATED STEERING WHEEL



Press the button to turn the heating steering wheel feature on and off. An amber indicator will illuminate when the heated steering wheel feature is on.

POWER STEERING

A fault with the power steering system is indicated by a message in the Message centre, accompanied by an amber warning lamp (see **49, GENERAL WARNING/INFORMATION MESSAGE (AMBER)**). A reduction in power steering assistance may be experienced. The fault may be caused by overheating due to extensive steering inputs or high ambient temperatures.

Full steering assistance should return when the system has been allowed to cool. If full steering assistance does not return, consult a Land Rover Dealer/Authorised Repairer.