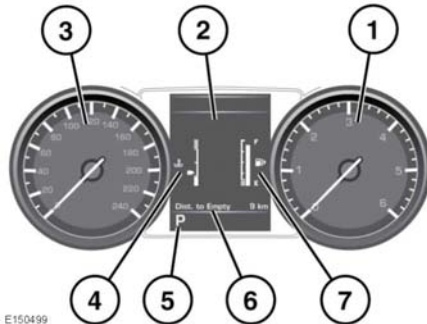
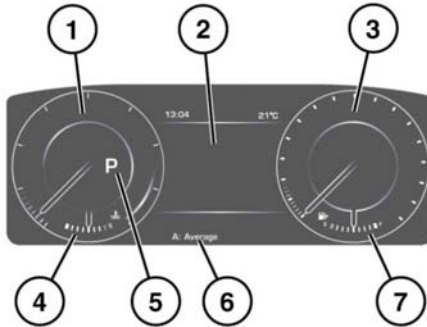


INSTRUMENT PANEL



E150499

1. Tachometer.
2. Message centre.
3. Speedometer.
4. Temperature gauge.
5. Gear selector position display.
6. Total distance (odometer) and trip recorder.

7. Fuel gauge.

If the amber low fuel warning lamp illuminates, the vehicle should be refuelled as soon as possible. The approximate distance that can be travelled on the remaining fuel can be viewed via the trip computer Distance to Empty function. See **47, TRIP COMPUTER**.

As a reminder for the location of the fuel filler, there is an arrow next to the fuel pump symbol pointing to the relevant side of the vehicle.

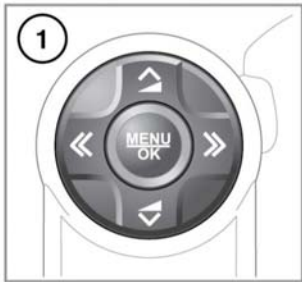
If the temperature gauge pointer moves into the red section at the top of the scale, the engine is overheating. Stop the vehicle as soon as safety permits and allow the engine to idle until the temperature reduces. If the temperature does not reduce after several minutes, switch off the engine and allow to cool. If the problem persists, seek qualified assistance immediately.

- ⚠ Never allow the engine to run out of fuel. The resultant misfire can seriously damage the catalytic converter.
- ⚠ Serious engine damage can occur if the vehicle is driven while the engine is overheating.

Note: *If engine overheating occurs, there may be a noticeable reduction in engine power and the air conditioning may cease operation. This is a normal operating strategy, to reduce load on the engine and assist with cooling.*

Instrument panel

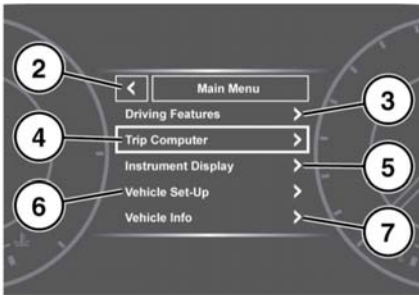
INSTRUMENT PANEL MENU



To display and navigate through the instrument panel menu, operate the menu control on the steering wheel.

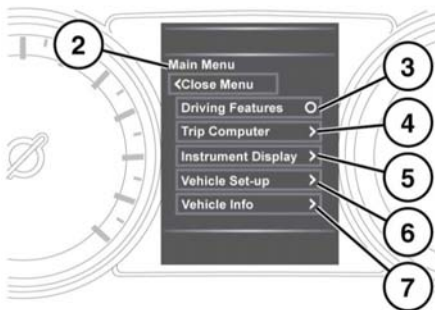
1. Steering wheel menu control.
2. Close and return to Main Menu.
3. Access the vehicle Driving Features menu.
4. Access the Trip Computer menu.
5. Access the Instrument Display menu.
6. Access the Vehicle Set-Up menu.
7. Access the Vehicle Info menu.

Note: Only available before the engine starts.



Digital Speedometer

A digital speedometer is available in some markets. Depending on market specification, the driver may choose to turn the digital speedometer on or off, or change the units from imperial to metric. The digital speedometer can be accessed through the Digital speedometer option in the instrument panel menu.



E 150518

A number of vehicle features and display settings may be configured via the instrument panel menu.

WARNING AND INFORMATION MESSAGES



Do not ignore warning messages, take appropriate action as soon as possible. Failure to do so may result in serious damage to the vehicle.

For information regarding the individual messages, their meanings, and any action required, please refer to the relevant section within this handbook.

If more than 1 message is active, each is displayed in turn for 2 seconds in order of priority.

Note: Messages are displayed in order of importance. High importance warning messages are given the highest priority.

Warning messages may be accompanied by an audible warning, and the message text may have the handbook symbol next to it. Warning messages are displayed until the condition causing the fault is rectified or the message is suppressed using the **OK** button on the steering wheel. If a message is suppressed, an amber or red warning icon will remain illuminated until the cause of the message is rectified.

TRIP COMPUTER

The computer memory stores data for a journey or series of journeys until it is reset to zero.

There are 3 trip memories available, A, B and Auto. You can specify which trip memory is viewable using the Instrument panel menu.

USING THE TRIP COMPUTER



E150532

The trip computer displays the date and odometer reading. A short press (1 second or less) or a series of short presses of the **j** button will change the trip computer display. The options available are:

- Trip distance.
- Trip average speed.
- Trip average fuel consumption.
- Instantaneous (short term average) fuel consumption.
- Driving style.

- Range available from remaining fuel.
- Blank display.

To reset the trip computer values to zero, press and hold the **i** button for 2 seconds.

The trip options can be configured using the **Trip content** feature within the **Trip computer** menu.

To reset the fuel consumption value, press and hold the **i** button until the display clears.

The distance, average speed and average fuel economy values for trip A and trip B can be reset. Set the trip computer display to show the trip that you wish to reset, then press and hold the **j** button until the message **resetting trip** is displayed.

It is not possible to manually reset the Auto trip memory. This resets automatically each time the ignition is switched on.

Trips may be added together, to record a continuous journey, or removed. Press the **i** button for longer than 1 second, when Auto trip memory values for distance, average speed and average fuel economy are displayed, then **adding last journey** or **removing last journey** will appear on the screen. Press the **i** button for longer than 1 second, and the previous trip information will be added to or removed from the current trip and the new total will be displayed. There is no limit to the number of times this can be done before the ignition is switched off.

TRIP DISTANCE

Distance travelled since the last memory reset. The maximum trip reading is 9999.9 (kilometres or miles). The computer will automatically reset to zero if this distance is exceeded.

RANGE

This shows the predicted distance (kilometres or miles) that the vehicle should travel on the remaining fuel, assuming fuel consumption and driving style remain constant.

METRIC/IMPERIAL/MIXED DISPLAY

The trip computer readings can be changed between metric, imperial and mixed units in the **Trip Computer** menu of the Message centre.

See **46, INSTRUMENT PANEL MENU**.

***Note:** Temperature display can be changed between °C (Celsius) and °F (Fahrenheit) independently of Metric or Imperial units.*

SERVICE INTERVAL INDICATOR

An upcoming service interval will be notified to the driver via the Message centre, as either a distance or time left until service is due. Once the distance or time are exceeded, the display will show a negative value (-) to indicate that a service is overdue.

One or both types of service interval (distance and time) may be displayed.