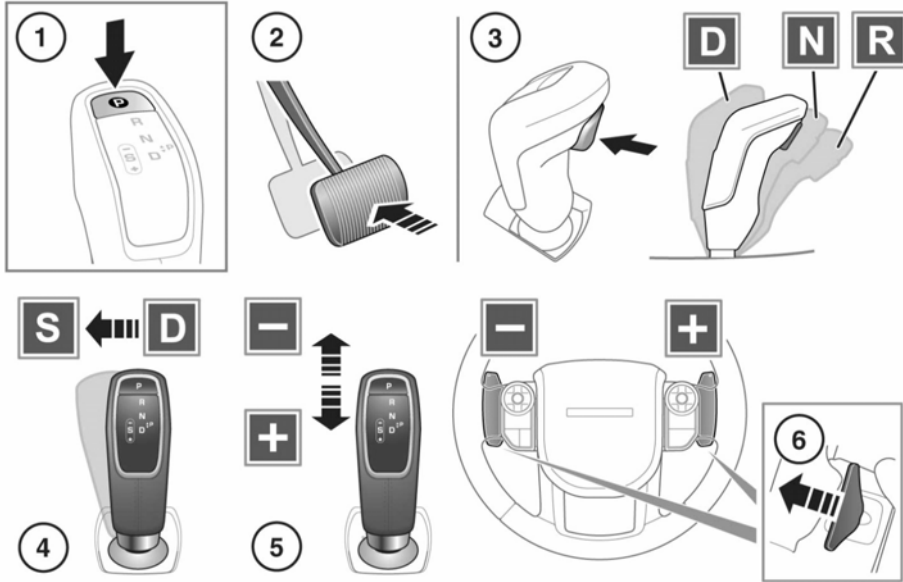


## AUTOMATIC TRANSMISSION



E151877

Gear selector status is displayed in the Message centre. See **45, INSTRUMENT PANEL**. Also the appropriate LED indicator, on top of the gear selector, will illuminate to confirm selection.

**⚠ Park (P) should only be engaged when the vehicle is stationary. If any other gear position is selected while the vehicle is stationary, the vehicle can move unexpectedly, which may result in death or serious injury. Always make sure the parking brake is applied after engaging P.**

**ⓘ** Never select Park (P) while the vehicle is in motion. Doing so can result in serious transmission damage.

**Note:** P cannot be selected by manually moving the gear selector.

1. Press to select Park (P). The Park (P) switch LED will illuminate to confirm. Select P before switching off the engine.


**Note:** P can be selected from any gear selector position.


**Note:** If the engine is switched off with Neutral (N) selected, the system will wait for 10 minutes before selecting P. This procedure is to allow the vehicle to be conveyed through a car wash only and should not be used for vehicle recovery purposes. See **253, TRANSPORTING THE VEHICLE**.

2. When the vehicle is stationary, depress the brake pedal prior to selecting Drive (D), Neutral (N) or Reverse (R).

3. With the brake pedal still applied, press the release button to allow the gear selector to be moved:
  - 1 movement back to select Drive (**D**).
  - 1 movement forward to select Neutral (**N**).
  - 2 movements forward to select Reverse (**R**).

**Note:** When the gear selector is released, after normal operation, it will return to the central position, except for when in the Sport (**S**) position.

 Never select Reverse (**R**) while the vehicle is in forward motion. Doing so can result in serious transmission damage.

 Never select a forward gear while the vehicle is moving backwards. Doing so can result in serious transmission damage.

**Note:** The release button is required for all gear selections, except for when selecting **N** from **D** or **R** and selecting **S** from **D** or **D** from **S**.

4. While in **D**, move the gear selector one side movement to select **S**.

**Note:** Reverse this action to return to **D**.

5. While in **S**, manual selection of the gears can be made by pulling the gear selector back for upshifts and pushing forward for downshifts.

Manual gear selection status is displayed in the Message centre. See **45**, **INSTRUMENT PANEL**.


Also the relevant gear selector LED indicator will indicate the status of manual gear selection:

- Continuous illumination confirms the driver's gear change request has been recognised and selected.
- On/off flashing confirms the driver's gear change request has been recognised, but not selected.

6. Gear shift paddles allow manual gear selection while in **D** or **S**. Operate the left paddle for downshifts and the right paddle for upshifts.

Pull the paddle briefly to change gear. To exit manual mode, pull and hold the right paddle for approximately one second to return directly to previous automatic operation in **D** or **S**.

**Note:** The gear shift paddles can be switched on and off, and configured to operate in '**S only**' or '**D and S**' via the **Vehicle Set-up** menu. See **45**, **INSTRUMENT PANEL**.

-  Do not allow the vehicle to remain stationary with a drive gear selected and the engine running. If the engine is to idle for a prolonged period, select **N** and apply the parking brake.

## MANUAL GEAR SELECTION

When **D** is selected, Manual mode may be temporarily accessed by operating the steering wheel mounted shift paddles.

While in **D**, temporary Manual mode will be held while the driver is accelerating, decelerating, cornering or continuing to request shifts via the paddles.

If continued use of temporary Manual mode (via the shift paddles) is required, select **S**.

Temporary Manual mode will be automatically deactivated if the engine is over-revved or laboured, to prevent transmission and/or engine damage.

Manual gear selection will be accompanied by the gearshift indicator. See **52, GEAR SHIFT (GREEN)**.



When the transmission is set to permanent Manual mode (i.e. using the paddles to change gear while in the **S** position and Dynamic mode is selected, see **134, DYNAMIC**) transmission up-shifts are fully controlled by the driver. This means that the transmission will not change up a gear automatically, even when the vehicle's rev limit is reached.

## HILL DESCENT

With Hill Descent Control (HDC) selected in either Drive (**D**), Sport (**S**) or manual gear selection (CommandShift™) modes, a low gear will be selected and maintained to provide maximum engine braking. Should the selector be moved to Drive (**D**) from the Sport (**S**) mode or if CommandShift™ is deactivated, the selected gear will be retained until the descent is completed. See **135, HDC CONTROLS**.

## STATIONARY RANGE CHANGING

With the vehicle stationary and the engine running, select Neutral (**N**).

Press the **Lo** range button and release. The range change status will be confirmed after several seconds.

## RANGE CHANGE INDICATORS

While the **Hi** range transmission is in use, no range indicators are illuminated



In **Lo** range, the green warning lamp in the message centre and the **Lo** range status indicator lamp on the **Lo** button will illuminate.

While a range change is in progress, the indicator lamps will flash as follows:

### Hi to Lo change:

- The **Lo** range indicator lamps flash during the change and then illuminate constantly.
- The message **LOW RANGE SELECTED** is briefly displayed in the message centre.

### Lo to Hi change:

- The **Lo** range indicator lamps flash during the change.
- The **Lo** range indicator lamps extinguish when the change is complete.
- The message **HIGH RANGE SELECTED** is briefly displayed in the message centre.

## RANGE CHANGING ON THE MOVE

The recommended method of changing range is with the vehicle stationary. For experienced off-road drivers, a change from **Lo** to **Hi** while on the move can be accomplished, as detailed below.

***Note:** Changing from **Hi** to **Lo** can be performed only with the vehicle stationary.*

## CHANGING FROM LOW TO HIGH RANGE

With the vehicle travelling no faster than 60 km/h (38 mph), select Neutral (**N**). Press and release the **Lo** button to select **Hi** range.

**Note:** If the **Lo** button is pressed before **N** is selected, the message **SELECT NEUTRAL FOR RANGE CHANGE** will be displayed in the message centre.

Indication of the range change status will be displayed in the message centre.

Once complete, select Drive (**D**).

## LIMP-HOME MODE

**Note:** The driver should be aware that the vehicle's performance will be reduced and must take this into account when driving. Use of the gear shift paddles will be disabled. In this event, seek qualified assistance as soon as possible.

In the event of an electrical or mechanical failure, transmission operation will be limited. **P**, **R**, **N**, **D** and **S** may still be used to enable the vehicle to be driven to a safe area.

Some faults will cause the selector to be locked in position until the ignition is switched off. If the selected gear flashes, it signifies that the driver request cannot be engaged. Re-select **N** and repeat the attempt.

If the transmission is still unable to select the requested gear, contact your Dealer/Authorised Repairer.