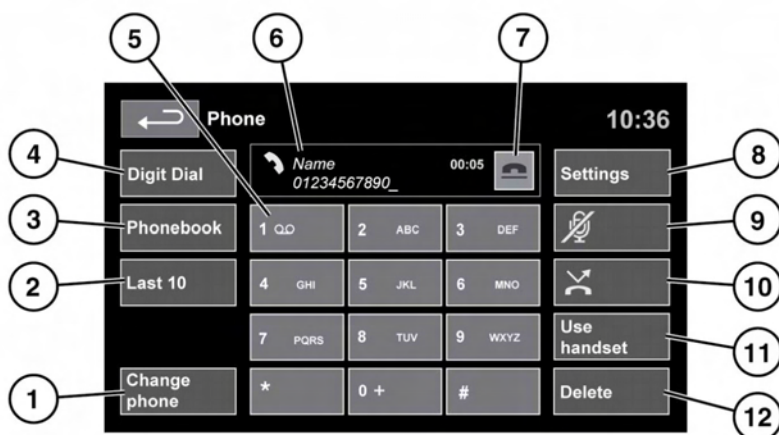


TELEPHONE SYSTEM OVERVIEW



E141184

1. **Change phone.** Search new or change to another paired phone.
2. **Last 10.** Access the last 10 dialed, received and missed calls.
3. **Phonebook.** Access the downloaded phonebook.
4. **Digit Dial.** Access Digit Dial mode.
5. Touch and hold to retrieve your Voice mail.
6. **Status display:** Displays the name and/or number dialed and call duration.
7. **Call Connect/Disconnect icons.** Touch to send/accept or end/reject a call.
8. **Settings.** Access Voice mail set up, Answer options and Phone options.
9. **Mute microphone.** Initiate Privacy mode. While selected, the caller will not hear you talking.
10. **Auto reject.** When active, any incoming calls will be rejected or diverted to voice mail (depending on mobile phone settings).
11. **Use handset.** Switch the call to your mobile phone.
12. **Delete.** Touch to delete the last entered digit, and hold to delete the whole entered number.

BLUETOOTH® INFORMATION



Bluetooth® is the name for short-range radio frequency (RF) technology that allows electronic devices to communicate wirelessly with each other.

The Land Rover **Bluetooth** wireless technology system supports **Bluetooth**® Hands-Free Profile (HFP), Advanced Audio Distribution Profile (A2DP) and Audio Video Remote Control Profile (AVRCP).

Note: HFP and A2DP/AVRCP profiles can be connected independently, so a phone can be connected via 1, while a media device can be connected via the other, at the same time.

Before making use of the vehicle's **Bluetooth** wireless technology phone system, your **Bluetooth** wireless technology device must be paired and connected to the vehicle system. This is done using 1 of 2 methods; via your phone to the vehicle or from the touch screen to your phone. If 1 of these methods is not successful, try the other option.

Each time the ignition is switched on the system will attempt to connect with the last connected phone.

As mobile phones have a wide range of audio and echo characteristics, it may take a few seconds for the vehicle system to adapt and deliver optimum audio performance. To achieve this, it may be necessary to reduce the in-vehicle volume and ventilation fan speed slightly.

TELEPHONE SAFETY



Switch off your telephone in areas with a high explosion risk. This includes filling stations, fuel storage areas or chemical factories, as well as places where the air contains fuel vapour, chemicals or metal dust.



Always stow your mobile phone securely.



The functioning of cardiac pacemakers or hearing aids may be impaired when the phone is in use. Check with a doctor or manufacturer whether any such devices you or your passengers are using, are sufficiently protected against high-frequency energy.

The Health Industry Manufacturers' Association recommends that a minimum separation of 15 centimetres (six inches) is maintained between a wireless phone antenna and a pacemaker, to avoid potential interference with the pacemaker. These recommendations are consistent with the independent research by, and recommendations of, Wireless Technology Research.

TELEPHONE COMPATIBILITY

Please refer to the Owners section of the Land Rover website at www.landrover.com, for a list of compatible phones.

Note: *The Bluetooth® wireless technology devices listed, have been tested for compatibility with Land Rover vehicles. Performance will vary, based on the phone's software version, battery condition, coverage and your network provider. Phones are warranted by their manufacturer, not Land Rover.*

PAIRING AND CONNECTING USING THE PHONE

Note: *The process of pairing and connecting your phone with the vehicle using the mobile phone will vary depending on the type of mobile phone used.*

1. Switch the ignition on and ensure that the touch screen is active.
2. From the home menu, select **Phone**.
3. A menu will appear. Select **Search new**.
4. Select **Device to vehicle** option.

Note: *The vehicle's Bluetooth® wireless technology system is discoverable for only 3 minutes.*

5. Using the mobile phone, search for **Bluetooth** wireless technology devices.

On some phones, this is referred to as new paired device. See your phone's operating instructions for further information.

6. When the vehicle's **Bluetooth** wireless technology system is discovered, follow the on-screen instructions. Select **Yes** when prompted, to confirm the pairing.
Either the phone or the vehicle system will ask for a PIN (Personal Identification Number). When prompted, enter a PIN of your choice and select **OK** to confirm.
7. Enter the same PIN into the other device.
8. Once your phone is paired and connected to the system, a confirmation message will be displayed before switching to the Digit Dial screen.

Note: Some mobile phones require the **Bluetooth** wireless technology device pairing to be set as 'authorised' or 'trusted' in order to automatically connect. Please refer to your phone's operating instructions for further information.

PAIRING AND CONNECTING USING THE TOUCH SCREEN

1. Switch on your mobile phone's **Bluetooth**® wireless technology device connection. Make sure that your mobile phone is in **Bluetooth** wireless technology device discoverable mode, sometimes referred to as find me mode (see your phone's operating instructions for more information).
2. Switch the ignition on and ensure the touch screen is active.
3. From the home menu select **Phone**.
4. A menu will appear. Select **Search new**.
5. Select **Vehicle to device** option.

6. Identify your phone from the displayed list and select the corresponding **Pair and connect** option.

Note: If more than 5 phones are detected, it may be necessary to use the scroll bar to see the entire list.

7. When prompted, enter the PIN code into your phone. See your phone's operating instructions for more information.
8. Once your phone is paired and connected to the system, a confirmation message will be displayed before switching to the Digit Dial screen.

Note: Due to the duration of a **Bluetooth** wireless technology device search, it is advised that the timeout to home screen feature is switched off before attempting to search for devices. This setting can be changed within **Vehicle, Syst settings, Display set, Timeout to home screen**.

CHANGING THE CONNECTED PHONE

Up to 10 mobile phones can be paired with the vehicle in the same way. However, only 1 can be connected and ready for use as a phone at any 1 time.

To connect a different paired phone to the vehicle, follow the steps below:

1. From the home menu, select **Phone**.
2. A menu will appear. Select **Change phone**.
3. Identify and select your phone from the displayed list.
4. Once your phone is connected to the system, a confirmation message will be displayed before switching to the Digit Dial screen.

TELEPHONE SYSTEM ICONS



Connect. Use to send or accept a call and access last 10 calls list.



Disconnect. Use to end or reject a call.



No phone connected.



Phone signal strength indicator.



Phone battery level indicator.



Bluetooth. Indicates that a Bluetooth® wireless technology device is connected.



Tick. Indicates that a Bluetooth wireless technology device is paired.



Voicemail. Press and hold to dial the stored voicemail number.

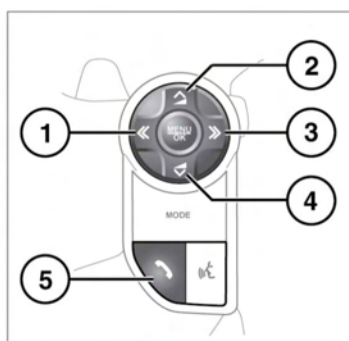


Scroll bar up arrow. Use to scroll up lists of detected phones, calls or phonebook entries.



Scroll bar down arrow. Use to scroll down lists of detected phones, calls or phonebook entries.

STEERING WHEEL CONTROLS



E142217

1. Press to scroll back through received calls, last 10 list and finally to exit list.
2. Increase volume when in a call, scroll up a displayed list or number listed for stored contact.
3. Press to scroll to last 10 list and received calls.
4. Decrease volume when in a call or scroll down a displayed list or number listed for stored contact.
5. Press to answer an incoming call. Press to end a call. Press and release to dial a number/contact. Press and release to access last 10 dialled list. Press and hold to access phonebook list view.

Note: When scrolling through a phonebook or last 10 list, each contact is also displayed in the Message centre.

CALL VOLUME

The phone call volume is operated by the audio system's volume control.

If the audio system is in use when a phone call is active, the audio system source is suppressed for the duration of the call.

PHONEBOOK

Contacts stored in the memory of a paired phone can be automatically downloaded to the vehicle's phonebook each time the phone is connected to the system. See **168**, **TELEPHONE COMPATIBILITY**.

Certain phones store the phonebook in 2 different areas, the SIM card and the phone memory. The vehicle system will access only those numbers stored in the phone memory.

To access contacts from the phonebook:

1. From the Phone menu, select **Phonebook**.
2. Using the keyboard, select the letter you wish to search under.
3. Select **List** to view the phonebook.
4. Identify the required contact from the displayed list and touch to call. If a contact has more than 1 number stored, select the required number from the list.

Note: *It may be necessary to use the scroll bar to see the entire list.*

There are also options to view more contact information, by selecting the corresponding **i** key.

If your phone supports contact type data, you will be able to see a contact type icon in the vehicle's phonebook directory. These can be seen on the right-hand side of each contact in the directory and will indicate 1 of the following types:



Default.



Mobile.



Home.



Work.

DECLARATION OF CONFORMITY

Export controls

This product contains commodities, technology or software exported from the United States in accordance with the Export Administration regulations. Diversion contrary to U.S. or Canadian law is prohibited.

United States of America

This device complies with part 15 of the FCC rules. Operation is subject to the following two conditions:

- (1) This device may not cause harmful interference, and
- (2) this device must accept any interference received, including interference that may cause undesired operation.

Note: *The manufacturer is not responsible for any radio or TV interference caused by unauthorized modifications to this equipment. Such modifications could void the user's authority to operate the equipment.*

Canada

This device complies with Industry Canada Standard IC - RSS-210. Operation is subject to the following two conditions:

- (1) this device may not cause interference, and
- (2) this device must accept any interference, including interference that may cause undesired operation of the device.

This equipment complies with FCC/IC radiation exposure limits set forth for uncontrolled equipment and meets the FCC radio frequency (RF) Exposure Guidelines in Supplement C to OET65 and RSS-102 of the IC radio frequency (RF) Exposure rules. This equipment has very low levels of RF energy that is deemed to comply without maximum permissive exposure evaluation (MPE).

But it is desirable that it should be installed and operated with at least 20cm (8 inches) and more between the radiator and person's body (excluding extremities: hands, wrists, feet and ankles).

USA FCC ID: A269ZUA130

Canada IC: 700BIAM2101

Note: Changes or modifications not expressly approved by the party responsible for compliance could void the user's authority to operate the equipment.

Note: This equipment has been tested and found to comply with the limits for a Class B digital device, pursuant to Part 15 of the FCC Rules. These limits are designed to provide reasonable protection against harmful interference in a residential installation.

This equipment generates, uses and can radiate radio frequency energy and, if not installed and used in accordance with the instructions, may cause harmful interference to radio communications. However, there is no guarantee that interference will not occur in a particular installation.

If this equipment does cause harmful interference to radio or television reception, which can be determined by turning the equipment off and on, the user is encouraged to try to correct the interference by one or more of the following measures:

- *Reorient or relocate the receiving antenna.*
- *Increase the separation between the equipment and the receiver.*
- *Connect the equipment into an outlet on a circuit different from that to which the receiver is connected.*
- *Consult the dealer or an experienced radio/TV technician for help.*