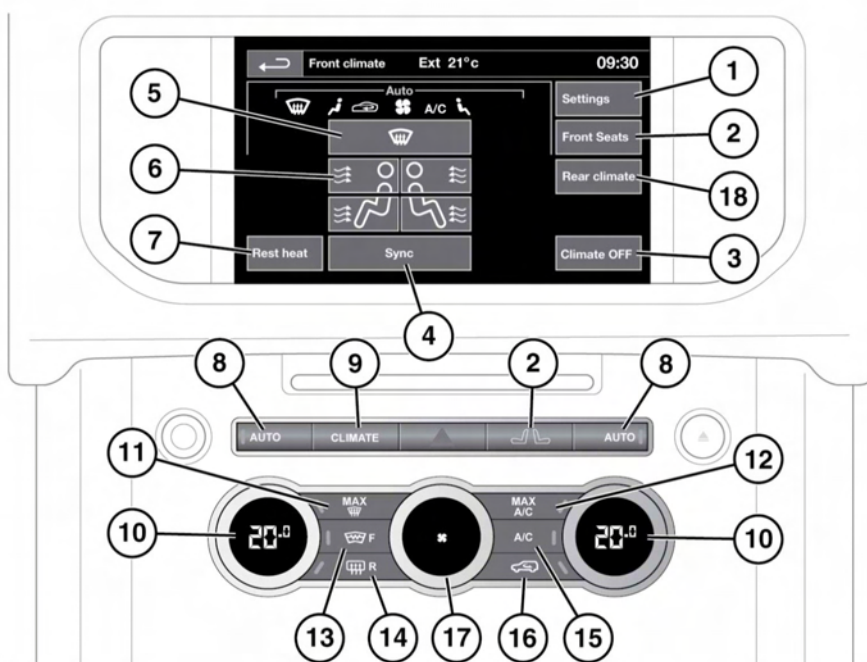


CLIMATE CONTROL



E139929

Press the **CLIMATE** hard key to access the climate control touch screen menu.

1. Climate control settings menu.
2. Front heated/climate seat menu.

Note: Heated seats operate only when the engine is running

3. Climate control system on/off.
4. Synchronises climate zones.
5. Distribute air to windscreen.
6. Air distribution.

Note: More than 1 setting may be selected at a time to achieve the desired distribution.

Note: Headlining vents deliver cold air only, regardless of temperature settings.

7. **Rest heat:** With the engine switched off, press to operate. With a warm engine, it is possible to provide cabin heating, by using the residual heat from the engine. This facility can be selected for up to 15 minutes after the engine is switched off and will operate until the engine cools.
8. **AUTO.** Press for fully automatic operation.
9. **CLIMATE** hard key.
10. Temperature controls. For individual driver/passenger settings.
11. Maximum defrost program.
12. Maximum air conditioning (cooling) program.
13. Heated windscreen. The heated windscreen will deactivate after a predetermined length of time.

14. Heated rear screen. The heated rear screen will deactivate after a predetermined length of time.



Do not attach labels to the rear screen. Do not scrape or use abrasive materials to clean the inside of the screen.

15. Air conditioning.
16. Recirculation. Press for timed recirculation. Press and hold for latched (continuous) recirculation. To cancel recirculation, press the button again.

Note: Prolonged use at low temperatures may cause the windows to mist.

17. Blower speed control. In manual mode, the current speed selection is indicated in the integrated screen on the blower speed control. To switch off climate control, rotate fully counter-clockwise, stop and then turn counter-clockwise again.

18. Rear climate menu.

Note: An indicator lamp in the switch will illuminate when the function is selected.

Note: To help keep the windows clear of ice, close the centre face level vent and direct air flow from the outer face level vents towards the side windows.

Note: The climate control system removes moisture from the air and deposits the excess water beneath the vehicle. Puddles may form but this is normal and no cause for concern.

Timed climate controls the optional auxiliary heater and can be set from the **Extra features** menu. See **74, SETTING A TIME FOR TIMED CLIMATE OPERATION.**

AUTOMATIC RECIRCULATION

If an air quality sensor is fitted, the climate control system will monitor exterior air pollution and humidity and select recirculation if either reaches a predetermined level. This feature only operates when the climate control system is in **AUTO** mode. The sensitivity of the air quality sensor can be set via the touch screen. See **72, AIR QUALITY SENSOR.**

Pressing the recirculation button will deactivate automatic recirculation.

AIR QUALITY SENSOR

The sensitivity of the air quality sensor can be adjusted using the touch screen:

1. Select **Settings** from the **Climate** menu.
2. Touch the +/- buttons on the screen to increase/decrease sensitivity.

To switch off air quality sensing, decrease sensitivity to the minimum setting.



The auto recirculation icon appears on the touch screen when the air quality sensor is switched on.

CLIMATE SEATS

Note: The climate seats will only operate when the engine is running.

Climate seats are controlled from the **Home** or **Climate** menus on the touch screen or by the CLIMATE or seat menu hard keys. See **73, SEAT MESSAGE**

Note: The **Front seats** menu will be displayed.

Heated ventilation:

- Touch the up arrow icon to switch heated ventilation on at maximum (3 red bars).

- Touch the down arrow icon once or twice to reduce the ventilation setting (2 and 1 red bars).
- Touch the down arrow a third time to switch off seat ventilation.

Cooled ventilation:

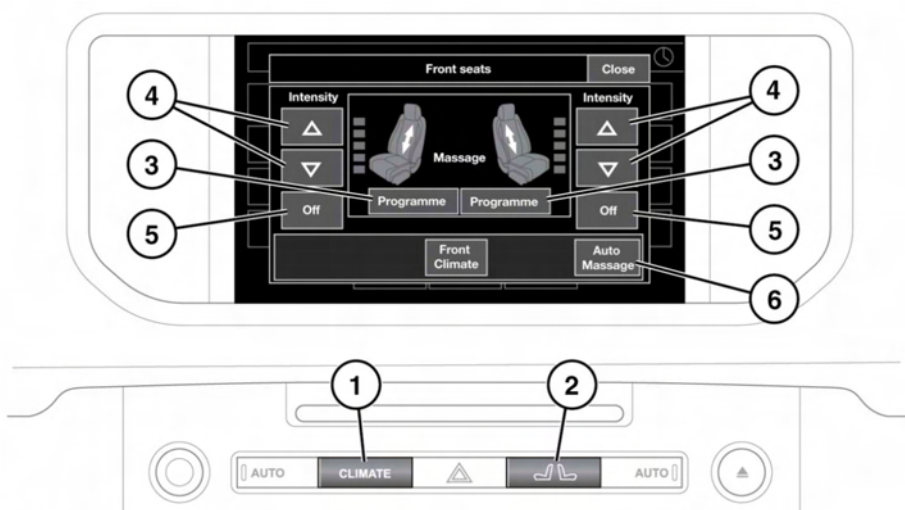
- Touch the down arrow icon to switch cooled ventilation on at maximum (3 blue bars).

- Touch the up arrow icon once or twice to reduce the ventilation setting (2 and 1 blue bars).
- Touch the up arrow a third time to switch off seat ventilation.

Seat zone selection:

- Constant selection of the **Seat zone** soft key will scroll through the 3 choices of seat zone; full seat, cushion or back rest only.

SEAT MESSAGE



E 142867

Note: Seat massage will only operate when the engine is running.

Seat massage may not operate when the vehicle interior temperature is below 0°C or above 50°C (32°F or 122°F respectively).

Seat massage is controlled through the touch screen. Either:

1. Press to display the Front Climate menu. Touch the **Seats** soft key, then touch the **Massage** soft key or;

2. Press to display the Front seats pop-up menu. Then touch the **Massage** soft key.
 - The pop-up menu screens will overlay the current screen. They will time out after a short period and the previous menu screen will be displayed.
3. Touch to display the desired seat massage program. Constant selection will scroll through the 5 different programs.
4. Touch to vary the intensity of the selected program.
5. Touch to end the program.

6. Touch to display a menu which allows the driver's seat Auto massage to be switched **On** or **Off** and to set the Time delay from the start of the journey to **5, 15, 30** or **60** minute intervals.

After 10 minutes, the seat massage will stop automatically.

AUXILIARY HEATER

Your vehicle may be fitted with an auxiliary heater which is powered by fuel drawn from the vehicle's tank. The heater only operates at low ambient temperatures, and is controlled by the Timed climate control system.

When the heater is operating, exhaust fumes from the heater may be visible exiting from under the front of the vehicle. This is normal and is not a cause for concern.



Do not operate the auxiliary heater when refuelling the vehicle. Doing so may cause fuel vapours to combust causing a fire/explosion.



Do not operate the auxiliary heater while the vehicle is in an enclosed space. Doing so can cause a build up of highly toxic fumes which may cause unconsciousness or death.

TIMED CLIMATE CONTROL

The timed climate control system provides a comfortable temperature inside the cabin in advance of driver and passengers entering. Dependent on the external temperature, the system draws in fresh air to cool the cabin or operates the auxiliary heater to warm it.

The auxiliary heater is also operated to warm the engine and aid starting in very cold conditions.

The timed climate control system may be operated by either the touch screen or the remote handset.

The system may not operate or will switch off automatically in the following scenarios.

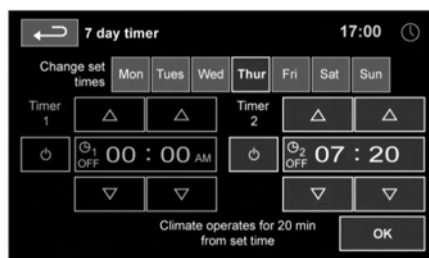
- If the fuel level is low.
- If the vehicle's battery charge is low.
- If the coolant temperature is at or above its required temperature.

SETTING A TIME FOR TIMED CLIMATE OPERATION

The touch screen can be used to either preset activation times or to operate the system manually.

When the system is operating, the LED in the climate control **AUTO** button will flash.

Note: *The system will cease operation if the engine is started*



E140084

To set a timed climate program:

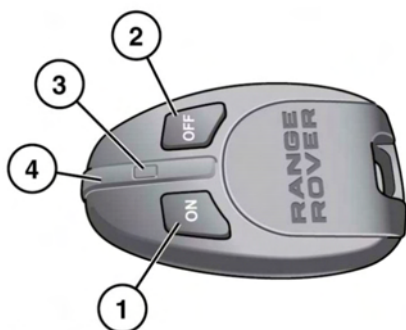
1. Press the **HOME MENU** hard key.
2. Touch the **Timed Climate** soft key. This soft key may be set on a personal shortcut or accessed via the **Extra Features** soft key. Select the day for which you want to set a program or select **All Week** to select the same start time for every day.
3. Touch the Timer 1 or Timer 2 icon. The timers can be toggled between on and off using the power soft key.

4. Touch the up or down arrows to set the start time. Hours and minutes are adjusted separately.
5. Touch **OK**. The screen will display the activation time. If required, set the time for the other timer using the same process.

Note: The time format, 12/24 hour clock, is determined by the time settings currently selected in the **System settings** menu. See **64, INSTRUMENT PANEL MENU**.

A current heating cycle will be cancelled if the engine is started. Any programmed heating cycle may be cancelled by touching the relevant power soft key on the timer set up menu or the **Power** soft key on the **Timed Climate** information home menu.

USING THE TIMED CLIMATE REMOTE



E144900

1. **ON** button.
2. **OFF** button.
3. LED (operation indicator).
4. Antenna.

Note: Avoid touching the antenna when operating the **ON** or **OFF** button.

The remote control has an approximate range of 100 metres. There is no need to point the antenna at the vehicle.

Press and hold the **ON** button for approximately 2 seconds. The LED will illuminate to confirm that an automatic heating program has been initiated. The LED flashes once every 2 seconds to indicate that the heater is active.

The heating program will continue for 20-30 minutes, when it will switch off automatically to prevent the vehicle battery from discharging. It also turns off automatically if the engine is started.

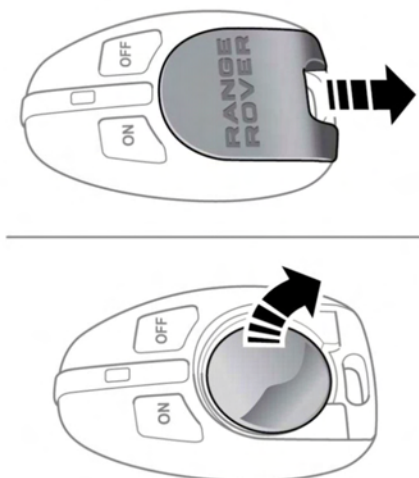
The LED indicator signals various states and conditions for the heater as follows:

- Illuminates green when the **ON** button is pressed, then quickly flashes green to indicate that heater operation has been requested.
- Illuminates green followed by red when the **OFF** button is pressed to indicate that the heater has been requested to shut down.
- Illuminates green, then quickly flashes red when either the **ON** or **OFF** button is pressed to indicate that there is no communication with the receiver.
- Illuminates green, then slowly flashes red when either the **ON** or **OFF** button is pressed to indicate that there is an error.
- Flashes red when either the **ON** or **OFF** button is pressed to indicate that the remote control battery charge is too low.

ADDITIONAL REMOTES

Extra remote controls can be programmed to operate the heater. A maximum of 3 remote controls can be programmed to each vehicle. Contact a Land Rover Dealer/Authorised Repairer to purchase extra remote controls and have them programmed to the vehicle.

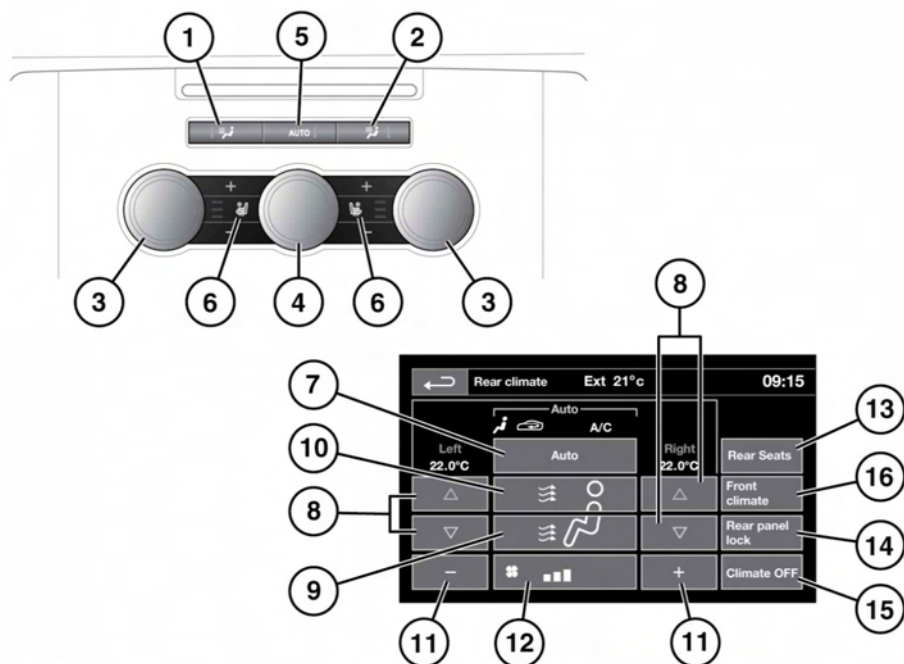
REPLACING THE REMOTE BATTERIES



E144902

With the front of the remote control facing upwards, press on the rear of the access cover and push completely off to reveal the battery compartment. Note which way up the battery is inserted. Remove the old battery and ensuring that the correct polarity is maintained, insert a new, unused 3 volt, CR1/3N battery. Align and push the cover back to the original position.

REAR CLIMATE CONTROL



E 143 155

There are 2 types of rear climate control: 3 Zone and 4 Zone. All of the 3 zone controls will affect the whole of the rear passenger compartment. The 4 Zone allows independent control of each side.

To access the rear climate touch screen menu, select **Rear climate** from the **Front climate** menu.

Note: When DEFROST is selected at the front, rear control is suspended until the defrost program ends.

There are also 2 types of seat cushion temperature controls.



Seat heat allows heating temperature control.



Climate seats allows heating and cooling temperature control.

Note: More than 1 setting at a time may be selected to achieve the desired air distribution.

1. Air distribution to feet. Press to switch on/off. Switch indicator illuminates when on.
2. Air distribution to face. Press to switch on/off. Switch indicator illuminates when on.
3. Temperature controls. Rotate to adjust between 16°C - 28°C (59°F - 83°F). The temperature settings are displayed on the Touch screen, **Rear climate** menu.
4. Blower speed control. Rotate to adjust.

Heating and ventilation

5. Press **AUTO** to select full auto mode operation. The system will adjust the heat output, blower speed, air intake and airflow distribution to maintain the selected temperature(s) without further adjustments. The air distribution and blower controls may be operated independently to override auto mode. If you do this, the indicator lamp on the switch will go out. Press again to return to full auto mode operation.
6. Seat heat/Climate seats temperature controls. Select the upper switch to increase and the lower switch to decrease. The 3 bar light display shows temperature status.
7. Touch to select **AUTO** mode on/off.
8. Temperature controls. Select the red arrow to increase and the blue arrow to decrease. The temperature settings are displayed above the arrows.
9. Air distribution to feet. Touch to switch on/off.
10. Air distribution to face. Touch to switch on/off.
11. Blower speed control. Touch left or right to adjust.
12. Blower speed indicator.
13. Touch **Rear seats** to adjust the Seat heat/Climate seats temperature settings.
14. Touch **Rear panel lock** to disable the rear climate control switches, to prevent the rear passengers from adjusting the rear climate settings. Select again to re-enable the controls.
15. Touch **Climate OFF** to exit the **Rear climate** menu.
16. Touch **Front climate** to open the **Front climate** menu.

In addition to the selectable controls, the rear climate menu displays symbols that indicate the status of heating and ventilation functions.

Note: *If the climate control system is switched off, pressing a rear AUTO button will switch the climate control system on.*