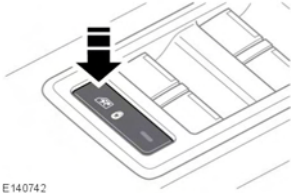


CHILD SAFETY LOCKS



E140742



If children are to be carried in the rear seat positions, it is recommended that the rear door interior handles are disabled.

Press the switch to activate child door locks and inhibit rear windows. The LED indicator will illuminate when active and a message will display in the Message center.

To switch off press again. The LED will extinguish and a message will display in the Message center.

CHILD SEATS

⚠ WARNING

According to crash statistics, children are safer when properly restrained in the rear seats than in the front seat. The air bags alone will not prevent children from being seriously injured or killed. Never place a child in any type of child restraint or booster seat in the front passenger seat. Children under the age of 13 should always ride in the rear.

Make sure the child seat fits your child properly. Always check the seat manufacturer's instructions and labels for height and weight limits. For more specific guidance, consult your paediatrician.

There are 3 general types of child restraint systems: Infant seats, toddler seats, and belt-positioning booster seats.

Infants: until at least 1 year of age and at least 20 lbs (9 kg).

Toddlers: until about age 4 and about 40 lbs (18 kg).

Boosters: belt-positioning booster until about age 8 or at least 4 ft 9 in. (145 cm) and seat belt fits properly.

⚠ DANGER

Do not allow a baby or infant to be held or carried on the lap. The force of a crash can increase effective body weight by as much as thirty times, making it impossible to hold onto the child. At all times, children should be restrained in age and size appropriate child seats to reduce the risk of death or serious injury in a crash.

⚠ WARNING

Children could be endangered in a crash if their child restraints are not properly secured in the vehicle. Always follow the instructions that accompany the child seat carefully.

Child restraint systems are designed to be secured in vehicle seats by use of the lap belts or the lap belt portion of a lap-shoulder belt. Children could be endangered in a crash if their child restraints are not properly secured.

The seat belts fitted to your vehicle are designed for adults and larger children. It is very important for all infants and children to be restrained in a suitable child safety seat appropriate to their age and size.



E79258

This symbol, affixed to the end of the fascia on the passenger side, warns against the use of a rear-facing child seat in the front passenger seat.

If it is essential that a child travels in the front passenger seat, (and national or state legislation permits this), Land Rover recommends that the following preparations are made before fitting the child restraint.

- Adjust the front passenger seat fully rearwards.
- Adjust the lumbar support to its minimum support position.
- Adjust the seat cushion to its highest position. If cushion rake adjustment is possible, adjust it to its lowest position.
- Adjust the seat back to the fully upright position.
- Adjust the seat belt adjustable upper anchorage to its lowest position.

⚠ WARNING

Extreme hazard! Never place a rearward facing child restraint on the front passenger seat. The infant could be serious injured or killed if the air bag deploys.

CHILD RESTRAINT CHECK LIST

Every time a child travels in the vehicle observe the following:-

Non-LATCH child restraints

- Carefully follow the instructions provided by the manufacturer of the restraint system.
- Always use the appropriate child restraints and adjust harnesses for every child, every trip.
- Avoid dressing a child in bulky clothing and do not place any objects between the child and the restraint system.
- Regularly check the fit of a child seat and replace seats or harnesses that show signs of wear.
- Ensure that you have removed all slack from the adult seat belt.
- No child seat is completely child-proof. Encourage a child not to play with the buckle or harness.
- Never leave a child unsupervised in the vehicle.
- Activate the rear door child safety locks. See **36, CHILD SAFETY LOCKS**.
- Set a good example - always wear your seat belt.

LATCH child restraints

- Always attach the top tether when installing the LATCH seat.
- Carefully follow the instructions supplied with the child seat. Always give the LATCH seat a final pull, to ensure that the lower anchors are secure.

Child safety

- Always use the appropriate child restraints and adjust the harnesses for every child, every trip.
- Make sure that a child falls into the correct weight range for the seat. Avoid dressing a child in bulky clothing and do not place any objects between the child and the restraint system.
- Regularly check the fit of a child seat and replace seats and harnesses that show signs of wear.
- No child seat is completely child-proof. Encourage children not to play with the buckle or harness.
- Never leave a child unsupervised in the vehicle.
- Activate the rear door child safety locks. See **36, CHILD SAFETY LOCKS**
- Set a good example - always wear your seat belt.

⚠ WARNING

Child restraint anchorages are designed to withstand only those loads imposed by correctly fitted child restraints. Under no circumstances are they to be used for adult seat belts, harnesses or for attaching other items or equipment to the vehicle.

CHILD SEAT POSITIONING

| PROPER CHILD SAFETY SEAT USE CHART Buckle Everyone. Children Age 12 and Under in Back. | | | |
|---|---|--|--|
| | INFANTS | TODDLER | YOUNG CHILDREN |
| WEIGHT | Birth to 1 year At least 20 to 22 lb. (9 to 10 kg). | Over 1 year and Over 20 to 40 lb. (9 to 18 kg). | Ages 4 to 8, unless 4 ft 9 in. (145 cm). Over 40 lb. (18 kg). |
| TYPE of SEAT | Infant only or rear facing, convertible. | Convertible/ Forward-facing | Belt positioning booster seat. |
| SEAT POSITION | Rear-facing only. | Forward-facing. | Forward-facing. |
| ALWAYS MAKE SURE | Children to 1 year and at least 20 lb. (9 kg) in rear-facing seats. Harness straps at or below shoulder level. | Harness straps should be at or above shoulders. Most seats require top slot for forward-facing. | Belt positioning booster seats must be used with both lap and shoulder belt. Make sure the lap belt fits low and tight across the lap and upper thigh area and the shoulder belt fits snug crossing the chest and shoulder to avoid abdominal injuries. |
| WARNING | All children age 12 and under should ride in the back seat. | All children age 12 and under should ride in the back seat. | All children age 12 and under should ride in the back seat. |

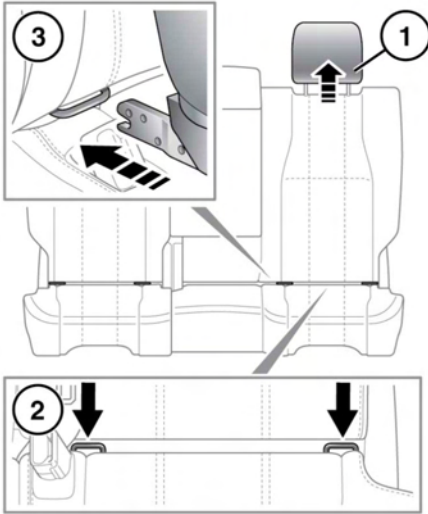
When installing a child seat in the rear, the front seat must be moved forward and upwards to install any rear-facing child seat.

Care must be taken not to load any part of the child seat when repositioning the front seat. The space available for front seat occupants will be reduced by the installation of any rearward-facing child seat.

WARNING

Crash statistics show that children are safest when properly restrained in a child restraint system appropriate for their age and weight and secured in a rear seating position.

LATCH CHILD RESTRAINT ANCHOR POINTS



E143653

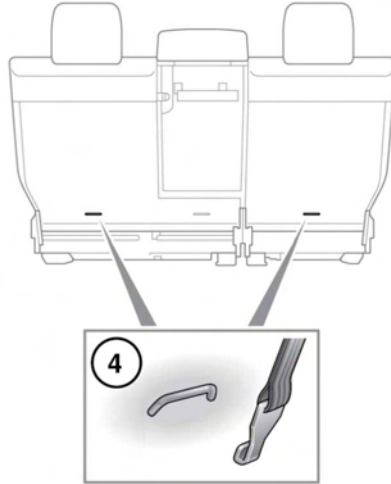
LATCH anchorage child restraints can only be fitted to the outer seat positions on the second row of seats.



This symbol is shown on a label sewn into the seats to indicate the position of the LATCH lower anchorages.

To install a LATCH anchorage child seat:

1. Raise or remove the head restraint.
2. LATCH anchor bars are in the fold of the seats.
3. For child seats fitted with **rigid** lower LATCH connectors, insert the protective guides supplied with the child seat. Slide the child seat locking mechanism into the protective sleeves and onto the anchor bars.



For child seats fitted with **non-rigid** LATCH connectors, connect the lower tether strap hooks to the anchor bars and tighten the straps.

4. Upper tether anchorages are provided on the rear of the 2 outer rear seats.
5. If an upper tether is fitted to the child seat, hook the tether to the tether anchorage and tighten to secure.

Note: Always ensure that if an upper tether is provided, it is fitted and tightened correctly.

Test the security of the child restraint. To do this, attempt to pull the restraint away from the vehicle seat and twist the restraint from side to side. Even if the restraint appears secure, you should still check the anchor points visually, to ensure correct attachment.

⚠️ WARNING

Do not attempt to fit a LATCH child restraint to the center rear seating position. The anchor bars are not designed to hold a LATCH child restraint in this position. Install only using seat belts (non-LATCH system) and the top tether at this position.

⚠️ WARNING

If the restraint is not correctly anchored, there is a significant risk of injury to the child in the event of a collision or emergency braking.

⚠️ WARNING

If removing a head restraint in order to fit a child restraint, always secure the head restraint when storing it.

See 27, HEAD RESTRAINTS.

INSTALLING TETHER ANCHORAGE CHILD RESTRAINTS

⚠️ WARNING

Child restraint anchorages are designed to withstand only those loads imposed by correctly fitted child restraints. Under no circumstances are they to be used for adult seat belts, harnesses or for attaching other items or equipment to the vehicle.

⚠️ WARNING

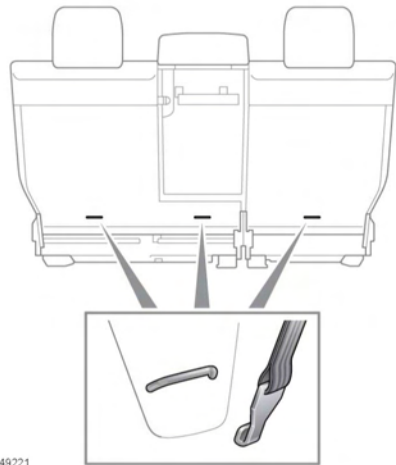
Always follow the child seat or restraint system manufacturer's instructions when fitting tether straps.

⚠️ WARNING

When fitting a child seat or restraint system, always pass the tether strap over the top of the seat back and beneath the head restraint.

⚠️ WARNING

If a child seat or restraint system is to be fitted to the center seating position, the center armrest must be in the stowed position (folded into the seat).



E149221

Your vehicle is equipped with anchorage points on the back of the second row seat frames. These should be used to attach straps from child seats or restraint systems.

- Install the child restraint securely in 1 of the rear seating positions.
- Pass the tether strap over the seat back and beneath the head restraint for the outer seat positions.

Note: For the center seat position, pass the tether strap over the fixed head restraint.

- Attach the tether strap hook to the tether anchor point. Ensure that the tether strap hook is facing the correct way (see illustration).
- Tighten the tether strap according to the child restraint manufacturer's instructions.

***Note:** A tether anchorage is provided for the center seat position. Do not use this anchor position with a LATCH anchorage child seat.*

BOOSTER SEATS

In a situation where a child is too large to fit into a child safety seat but is still too small to safely use just the 3 point belt, a booster seat is recommended for maximum safety. Follow the manufacturer's instructions for fitting and use, then adjust the seat belt to suit. See **39, CHILD SEAT POSITIONING**.