

# Exiting the vehicle

## LOCKING AND ARMING THE ALARM

### **⚠ WARNING**

Before exiting the vehicle, always ensure that the gear selector is in the Park (P) position, the engine is turned off, the parking brake is applied and the Smart Key is removed from the vehicle.

Press the lock button on the Smart Key briefly, to lock the vehicle and activate the perimeter alarm. The hazard warning lamps will flash to confirm.

The perimeter alarm will sound if:

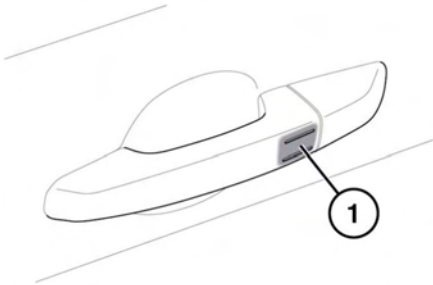
- The hood, tailgate or a door are opened.
- The vehicle battery is disconnected.
- An attempt is made to disconnect the alarm siren.

## KEYLESS LOCKING

### **NOTICE**

The Smart Key may not be detected if it is placed within a metal container or if it is shielded by a device with a back-lit LCD screen, such as a smart phone, laptop (including laptop bag), games console etc.

**Note:** Loose coins in the same pocket as the Smart Key may also affect its detection.



E149220

The vehicle will not lock automatically.

**Note:** Keyless locking will activate only if the Smart Key is detected outside the vehicle. If no Smart Key is present, no locking will occur.

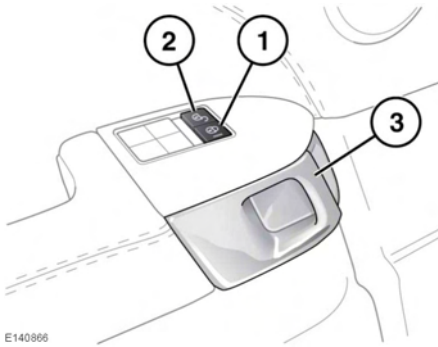
- To lock the vehicle touch only the keyless locking sensor (1) once without grabbing the door handle.

**Note:** Do not place your fingers around the back of the door handle while touching the sensor. Doing so will prevent the vehicle from locking.

- The hazard warning lamps will flash once to confirm locking and the power fold mirrors will fold in (if enabled).

**Note:** When locking the vehicle via Keyless locking, if 1 or more of the doors, the hood or the tailgate is not fully closed, or the ignition is ON, the vehicle will NOT lock. There will be NO audible mislock error warning. The hazard warning lamps will NOT flash and the door mirrors (if enabled) will NOT fold in. Check that all doors, the hood and the tailgate are closed properly. Make sure that the ignition is turned OFF and lock the vehicle again. If the mislock persists, consult a Land Rover Retailer.

## DOOR LOCKS AND RELEASE LEVERS



E140866

1. Lock:
  - Press the driver or front passenger lock button to lock all doors.
  - Press a rear passenger lock button to lock an individual door.
2. Unlock:
  - Press the driver or front passenger door unlock button to unlock all doors. Alternatively, pull the door release handle (3) once to unlock the individual door.
  - Press a rear passenger door unlock button to unlock an individual door. Alternatively, pull the door release handle (3) once.
3. Door release handle: pull to open the door. If the door is locked, pull the handle once to unlock the door.

**Note:** The unlock button is inhibited when the vehicle is locked with the Smart Key.

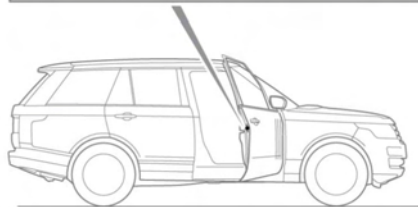
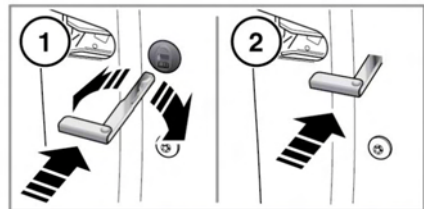
## MISLOCK

When attempting to lock the vehicle with the Smart Key, if 1 or more of the doors, the hood or the tailgate is not fully closed or the ignition is ON, the vehicle will NOT lock and an audible warning will sound twice. Ensure the ignition is turned off and lock the vehicle again. The vehicle will NOT fully lock until all doors, the hood and the tailgate are completely closed.

## DEACTIVATING THE ALARM WHEN TRIGGERED

If the alarm has been triggered it can be deactivated by pressing the Smart Key unlock button, or by positioning the Smart Key against the steering column. See **102, KEYLESS START BACKUP**.

## EMERGENCY LOCKING



E145208

In the event of the battery discharging or a fault with the keyless locking system, the doors must be locked manually.

## Exiting the vehicle

**Note:** Do not leave the emergency key blade in the vehicle at any point during the emergency locking procedure.

1. Open the door and locate the emergency lock access cover. Using the emergency key blade (see **9, UNLOCKING THE VEHICLE**) rotate the cover to release it from the door.  
Remove the cover and store it safely.
2. Insert the emergency key blade firmly into the emergency lock.  
The emergency key blade can now be removed.
3. Refit the emergency lock access cover and rotate it clockwise to secure it firmly.
4. Close the door and check to make sure the door is locked.  
Repeat the procedure for all other unlocked doors.