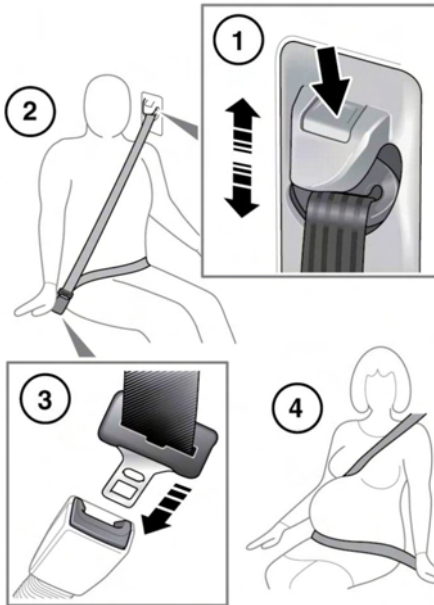


USING THE SEAT BELTS



E140967

- 1. Seat belt height adjustment:** Press to release the catch.

With the catch depressed move the mechanism slide up or down to the required height. Ensure that the locking mechanism has engaged.

When correctly positioned the seat belt should cross the collar bone at the mid-point between the neck and end of your shoulder.

Where possible, rear seat passengers should adjust their position on the seat, to enable the seat belt webbing to cross the shoulder without pressing on the neck.

⚠ WARNING

Ensure that the height is correctly adjusted and the mechanism is locked in place before driving. Do not attempt to adjust the seat belt height once the vehicle is in motion. Doing so may cause you to lose control of the vehicle, or incorrectly adjust the seat belt.

⚠ WARNING

Do not use comfort clips or other devices that create slack in the seat belt system.

⚠ WARNING

No modifications or additions should be made by the user which will either prevent the seat belt adjusting devices from operating to remove slack, or prevent the seat belt assembly from being adjusted to remove slack. A slack seat belt offers a greatly reduced level of occupant protection in an impact.

- 2. Putting on a seat belt:** Draw the belt out smoothly, ensure that the belt height, the seat and the occupant's position on the seat, are correct.

⚠ WARNING

Seat belts are designed to bear upon the bony structure of the body, and should be worn low across the front of the pelvis, chest and shoulders, or the pelvis (lap belts). Never wear the lap belt across your waist or abdomen.

⚠ WARNING

Seat belts should be adjusted as firmly as possible, consistent with comfort, to provide the protection for which they have been designed. A slack belt will greatly reduce the protection afforded to the wearer.

Seat belts

⚠️ WARNING

Belts should not be worn with the straps twisted.

⚠️ WARNING

Each belt assembly must only be used by 1 occupant. Never let children share a seat or seat belt.

⚠️ WARNING

Riding with a reclined seatback increases your chance of serious or fatal injuries in the event of a collision or sudden stop. The protection of your restraint system (seat belts and airbags) is greatly reduced by reclining your seat. Seat belts must be snug against your hips and chest to work properly. The more the seatback is reclined, the greater the chance that an occupant's hips will slide under the lap belt or the occupant's neck will strike the shoulder belt. Drivers and passengers should always sit well back in their seats, properly belted, and with the seatbacks upright.

⚠️ WARNING

Never place anything between you and the seat belt. It can be dangerous and reduce the effectiveness of the seat belt in preventing injury.

⚠️ WARNING

The air bag supplemental restraint system (SRS) is designed to add to the overall effectiveness of the seat belts. It does not replace them. Seat belts must always be worn.

⚠️ WARNING

Do not carry hard, fragile, or sharp items between your person and the seat belt. In an impact, the pressure on such items can cause them to break, which in turn may cause death or serious injury.

⚠️ WARNING

Seat belts should be worn by all vehicle occupants, for every journey, no matter how short. Failure to do so will greatly increase the risk of death or serious injury in the event of an accident.

⚠️ WARNING

Never wear just the lap belt or just the shoulder belt of a lap/shoulder diagonal seat belt. Both of these actions are extremely dangerous and may increase your risk of injury.

3. **Fastening a seat belt:** With the seat belt correctly positioned, place the metal tongue into the buckle nearest to you. Press it in until a click is heard.

To release the seat belt, press the red button.

Note: When releasing the seat belt it is advisable to hold the belt before pressing the release button. This will prevent the belt from retracting too quickly.

4. **Seat belt use during pregnancy:** Position the lap strap comfortably across the hips beneath the abdomen. Place the diagonal part of the seat belt between the breasts and to the side of the abdomen, as illustrated. Ensure that the seat belt is not slack or twisted.

⚠️ WARNING

Position the seat belt correctly for the safety of the mother and unborn child. Never wear just the lap strap, and never sit on the lap strap while using just the shoulder strap. Both of these actions are extremely dangerous, and may increase your risk of serious injury in the event of an accident or during emergency braking.

⚠ WARNING

Never place anything between you and the seat belt in an attempt to cushion the impact in the event of an accident. It can be dangerous and reduce the effectiveness of the seat belt in preventing injury.

⚠ WARNING

Ensure that the seat belt is not slack or twisted.

SEAT BELT LOCKING MECHANISM

The rear seat belts and front passenger seat belt have a locking mechanism which improves the retention of large items on the seats. The mechanism can also be used to retain non-LATCH child seats. See **36, CHILD SEATS**.

The procedure to use the locking mechanism is as follows:

1. Place the large item on the seat.
2. Pull on the shoulder section of the belt to unreel all of the remaining webbing to the limit of its travel. This will engage the automatic locking feature which then acts as a ratchet, allowing the webbing to retract but not unreel again.
3. Allow the seat belt to retract onto the item (a clicking sound will confirm that the ratchet has engaged), while firmly pushing the item into the vehicle seat.
4. Make sure that there is no slack in the seat belt by pulling upwards on the shoulder belt immediately above the retained item.

When the item is removed and all of the seat belt webbing is allowed to retract, the seat belt locking mechanism reverts to normal operation.

SEAT BELT CARE

⚠ WARNING

The belt should be replaced if webbing becomes frayed, contaminated or damaged. It is essential to replace the entire assembly after it has been worn in a severe impact even if damage to the assembly is not obvious.

If any damage, wear, cuts, defects, or impaired operation are noted with the seat belts, the vehicle should be taken to a Land Rover Retailer/Authorized Repairer for immediate attention. Do not use the vehicle if the seat belts cannot be operated correctly.

Care must be taken to avoid contamination of the webbing with polishes, oils and chemicals, and particularly battery acid. Cleaning may safely be carried out using mild soap and water. Contaminated seat belts may not operate correctly in an impact and cannot be relied upon.

When using seat belts to restrain items other than occupants, take care to ensure that the belts are not damaged, or exposed to sharp edges.

SEAT BELT CHECKS

Note: If the vehicle is parked on an incline, the seat belt mechanism may lock. This is not a fault and the belt should be gently eased out from the upper anchorage.

The seat belts should be inspected regularly to check for fraying, cuts, wear to the webbing and the condition and security of the mechanism, buckles, adjusters and mounting points.

- With the seat belt fastened, give the webbing near the buckle a quick upward pull. The buckle must remain securely locked.

Seat belts

- With the seat belt unfastened, unreel the seat belt to the limit of its travel. Check that it unreels smoothly with no snatches or snags. Allow the belt to fully retract, again checking for smooth operation.
- Partially unreel the seat belt, then hold the tongue plate and give a quick forward pull. The mechanism must lock and prevent any further unreeling.

⚠ WARNING

If any of the seat belts fail to meet those criteria, immediately contact your Land Rover Retailer/ Authorized Repairer.

SEAT BELT PRE-TENSIONERS

The seat belt pre-tensioners activate in conjunction with the Supplementary Restraint System (SRS) to provide extra protection in the event of a severe frontal impact. They automatically reduce any slack in a seatbelt to reduce forward movement of a front seat occupant.

⚠ WARNING

The seat belt pre-tensioners will activate only once and then must be replaced. Failure to replace them will reduce the effectiveness of the SRS in reducing the risk of serious injury or death in the event of an accident.

⚠ WARNING

After any impact, have the seat belts and pre-tensioners checked and if necessary, replaced by a Dealer/Authorized Repairer.

SEAT BELT REMINDER

Seat belt reminder commences when the vehicle is in motion and the driver's belt is unbuckled. Dependent on market, the warning indicator in the Instrument panel illuminates (See **68, SEAT BELT (RED)**), the message **FASTEN SEAT BELTS** appears in the Message center and an audible chime sounds. The visual and audible warnings applicable to the Seat belt reminder feature are market dependent to meet individual market requirements. The warning signals given may also change depending on whether the vehicle is stationary or when the vehicle speed exceeds a pre-determined threshold. In certain markets, the Seat belt reminder feature also applies to the front passenger seat.

The Message center also displays a front and rear seat belt reminder that warns the driver when the seat belt of any occupied seat is not fastened or is unfastened during a trip



E144213

- Each seating position is represented by a passenger icon, the color and symbol of which indicates the seat belt status:
 - Tick - seat belt in the indicated position is fastened.
 - Cross - seat belt in the indicated position has been unfastened while the vehicle ignition is on. This indicator will turn gray after 30 seconds.
 - Gray - seat belt not fastened.

Note: *The indicators will be displayed for 30 seconds each time there is a status change, e.g., a seat belt is unfastened or fastened or a door is opened and then closed.*

- In addition, an audible warning will sound under the following conditions:
 - The seat belt of an occupied front seat is not fastened or is unfastened during a trip.
 - A rear seat belt is unfastened.

Note: *Objects placed on the front passenger seat may activate the seat belt reminder warning chime and indicator. It is recommended that any objects placed on the front passenger seat are secured using the seat belt.*