

PARK ASSIST

Park assist is an aid to parallel parking in tight parking slots. For the system to operate correctly, your vehicle must be parallel to a line of parked vehicles along which you intend to search for a parking space. Your front wheels must be in the straight ahead position. Parking on a bend may cause the system to miscalculate distances.

When the sensors detect a space sufficient to park in, an instruction will be displayed in the Message center.

The actual parking maneuver is controlled by the vehicle, without your hands on the steering wheel. The Message center will tell you when the steering wheel must be released.

⚠ WARNING

Park assist is a driving aid only. It remains the driver's responsibility to drive with due care and attention during parking maneuvers.

⚠ WARNING

Park assist may not detect moving objects such as children and animals, until they are dangerously close. Always use extreme caution when maneuvering.

NOTICE

Park assist sensors may not detect some obstructions, e.g. narrow posts, small objects close to the ground and some objects with dark non-reflective surfaces, and in some circumstances bicycles/motor cycles parked alongside the curb.

NOTICE

All sensors must be kept clean and free from debris or obstructions, e.g., leaves, mud, snow or insects. Failure to keep the sensors clean may result in sensor miscalculation or false indications.

NOTICE

Park assist must not be used if any of the following criteria are met:

- A temporary spare wheel is in use.*
- A sensor is damaged or a fender is damaged sufficiently to affect a sensor mounting point.*
- A sensor is obstructed by items attached to the vehicle, e.g., fender covers, a bicycle rack, a trailer, stickers, etc.*
- The vehicle is being used to transport a load that extends beyond the vehicle perimeter.*

NOTICE

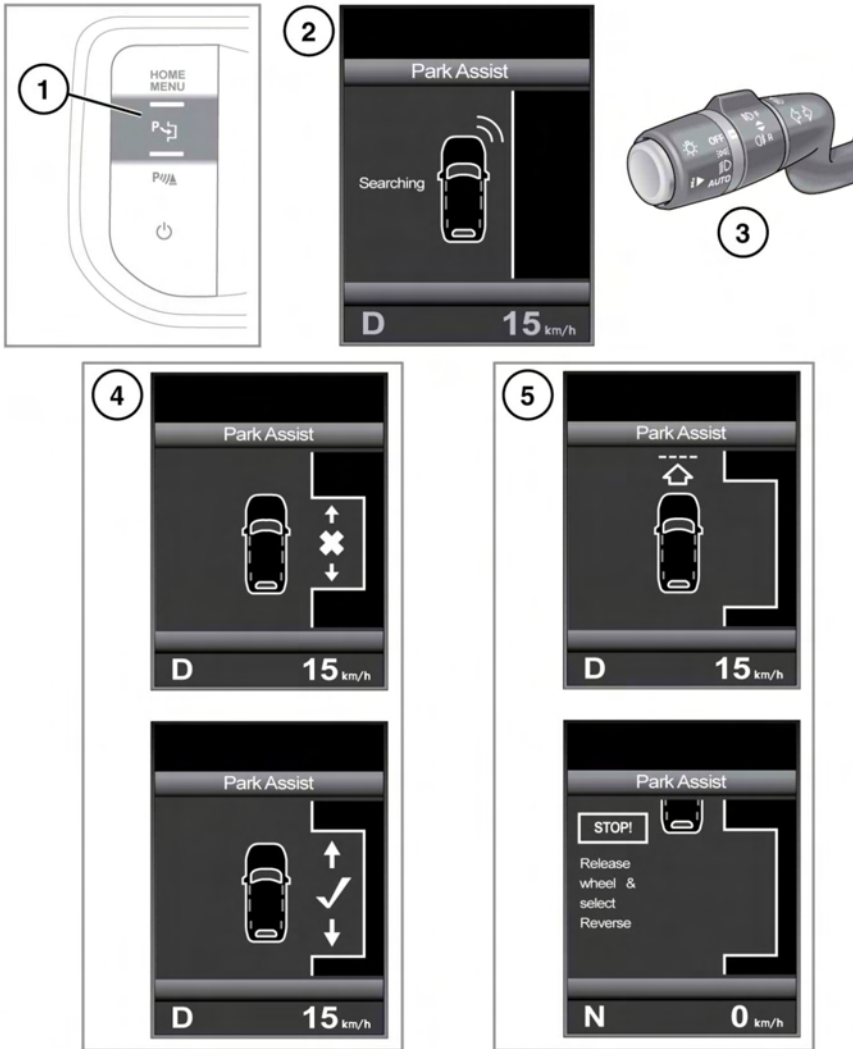
When Park assist searches for an appropriate parking space, there must be an acceptable distinction between the road surface and the curb height. Damaged or very low curbs or curbs covered with debris or snow may cause a sensor miscalculation.

Note: *All doors should be securely closed.*

Note: *During any Park assist maneuver, the Parking aid system will remain active and will sound when objects are detected near the vehicle.*

Note: *A parking maneuver can be cancelled at any point by holding / turning the steering wheel or by pressing the Park assist button.*

Note: *In a situation where the rows of parked vehicles on either side of the road are close enough for Park assist to sense them and Park assist determines that there is not enough maneuvering space for reverse parking, the space will be rejected, even if the driver believes the space is large enough to park the vehicle. The driver retains the option to switch off Park assist and to attempt the parking maneuver manually.*



E138574

1. To activate, press the Park assist button while driving forwards at less than 19 mph (30 km/h). The indicator lamp in the button illuminates.

Note: If vehicle speed exceeds 19 mph (30

km/h), **SLOW DOWN!** is displayed until speed decreases to less than 19 mph (30 km/h) again. If vehicle speed is not reduced, Park assist is de-activated and the indicator light in the button is extinguished.

Park assist

Note: Park assist sensors can be affected by sudden temperature differentials. For example, if the vehicle is moved from a warm interior into a cold exterior temperature, the sensors will require time to adjust. The same applies if the move is from a cold situation into a significantly warmer ambient temperature.

2. The **Park Assist** display appears in the Message center and shows the **Searching** message and graphic. All messages and instructions are displayed here. Take action when the text is an instruction.

Note: For Park assist to operate effectively, maintain a parallel distance of 1.6 to 4.9 ft (0.5 to 1.5 m) between your vehicle and the line of parked vehicles/obstacles in which you want to park.

3. When first activated Park assist searches for a space on the front passenger side of the vehicle. To search for a space on the driver's side, signal a turn in that direction.
4. As you drive forward, the size of potential parking spaces is assessed and displayed graphically.
5. A short confirmation tone is given when a suitable space is found and a message to stop or to drive forward to a starting point will be given, depending on the vehicle's current position.

NOTICE

Make a visual check before starting the reversing maneuver to ensure that the space has not changed in any way, e.g., a pedestrian has stepped into the space.

6. An instruction to select Reverse (**R**) will follow. Park assist will then take control of the vehicle's steering system and the steering wheel must be released. Release the foot brake carefully to move the vehicle slowly into the parking space. Follow the instructions in the Message center.

NOTICE

The driver must maintain full control of the accelerator and brakes throughout the maneuver.

Note: If the steering wheel is manually adjusted while Park assist has control of the steering, Park assist will de-activate and the indicator lamp in the Park assist button will extinguish.

Note: Park assist can be reactivated by pressing the Park assist button and the previous parking maneuver will be resumed.

Note: If vehicle speed exceeds 4 mph (6 km/h) during the parking maneuver, Park assist will display a **SLOW DOWN!** message until speed decreases to less than 4 mph (6 km/h). If vehicle speed is not reduced, Park assist will de-activate and the indicator lamp in the Park assist button will extinguish.

7. If further maneuvering is required in the parking space, select Drive (**D**)/Reverse (**R**) and continue to follow instructions displayed in the Message center.
8. When the parking maneuver is completed, **STOP** will be displayed.

If a system fault is detected, a continuous tone will sound and a message will be displayed in the Message center. Contact your Land Rover Retailer/Authorized Repairer as soon as possible.

PARK ASSIST LIMITATIONS

⚠️ WARNING

Park assist is a supplement to, and not a replacement for, good observation and a safe driving style. It is the driver's responsibility, at all times, to ensure that reversing maneuvers are carried out safely.

Park assist may provide inaccurate results if:

- The size or shape of the parking spaces changes after it was measured.
- There is an irregular curb alongside the parking space or the curb is covered with leaves, snow etc.
- The vehicle is being used to transport a load that extends beyond the perimeter of the vehicle.
- The vehicle had a repair or alteration that was not approved by a Land Rover Retailer/Authorized Repairer.
- The vehicle has been fitted with non approved wheels or tires or there is significant tire wear.
- 1 of the parked vehicles has an attachment at a raised height such as a flat bed truck, snow plough or cherry picker.
- The parking space is located on a corner or curve.
- The sensors are dirty or covered in mud, ice or snow.
- The weather is foggy, raining or snowing.
- The road surface is bumpy such as gravel.
- A tow bar or trailer hitch is fitted.
- It encounters an obstruction that is thin or wedge shaped.
- It encounters an obstruction that is elevated and/or protruding, such as ledges or tree branches.
- It encounters an obstruction with corners and sharp edges.

PARK ASSIST TROUBLESHOOTING

Park assist is not searching for a parking space

- The system may not be activated.
- The vehicle may be travelling above 19 mph (30 km/h).

Park assist does not offer a certain parking space

- The sensors may be covered or partly obscured by dirt, mud, ice or snow.
- The space may not be large enough or there may not be enough space on the opposite side of the vehicle for the front to swing out during the maneuver.
- The vehicle may have been driven too far away (more than 5 feet [1.5 meters]) from the row of parked vehicles.
- The vehicle may have been driven too close (within 16 inches [41 cm]) to the row of parked vehicles.
- The vehicle may have been driven in reverse. Park assist will only search for a parking space when the vehicle is in Drive (D).

Park assist has not positioned the vehicle accurately within the space

- 1 or more of the system limitations criteria may have been met. See **125, PARK ASSIST LIMITATIONS**.