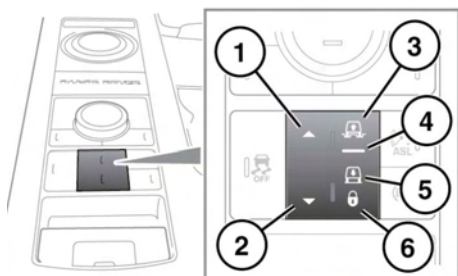


Suspension

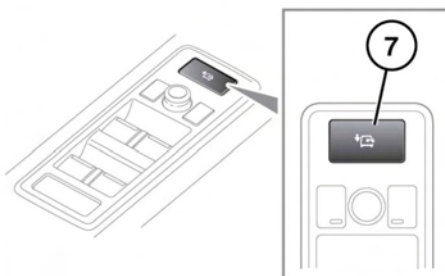
AIR SUSPENSION SYSTEM

⚠ WARNING

Ensure that the vehicle is clear of people and obstacles before lowering the suspension. The difference between Off-road height and Access height can be 4.9 in. (125 mm).



The air suspension system may be used to raise or lower the height of the vehicle, using the air suspension control switch.



E140383

1. Raise the suspension height.
2. Lower the suspension height.
3. Off-road height indicator.
4. Normal height indicator.
5. Access height indicator: Access height is 2.0 in. (50 mm) lower than normal height.
6. Suspension locked in Access height indicator.
7. Access height switch.

Note: The system may raise or lower the vehicle automatically (e.g. if a Terrain response program requires it, or if the vehicle is traveling at high speed).

Changes to the height of the vehicle must be made when all doors are closed. Except for remote operation (see **112, REMOTE OPERATION**) the engine must also be running. If a door is opened during a height change, the height change will be suspended. If the door is closed within 90 seconds, the height change will resume. If the doors are not closed in time the Message center will display a message **CONFIRM REQUIRED SUSPENSION HEIGHT**. Driving off will return the vehicle to normal height.

Note: If the air suspension is used many times in succession, speed of operation may slow.

OFF-ROAD HEIGHT

Off-road height can be selected from normal height by pressing up on the raise/lower switch (1) at any speed up to 43 mph (70 km/h). The Message center will display **OFF-ROAD HEIGHT SELECTED**.

The Off-road height is dependant upon vehicle speed. The Off-road height selected will be confirmed with an **Off-Road (1)** or **(2)** icon in the Touch screen display when in the **4x4 info** menu.

Off-Road 1 height is 1.6 in (40 mm) above normal height up to 80 km/h (50 mph).

Off-Road 2 height is 2.9 in (75 mm) above normal height up to 31 mph (50 km/h). The suspension height can change automatically between these heights. **Off-Road 2** can be selected when at **Off-Road 1** height by pressing up on the raise/lower switch when travelling less than 25 mph (40 km/h).

To select normal height, press down on the raise/lower switch **(2)** or increase the speed above 50 mph (80 km/h).

EXTENDED MODE

If the vehicle body is raised (e.g. by jacking) or grounded in severe off-road conditions, the system may automatically enter Extended mode. Symbols in the raise/lower switch will flash and the Message center will display **SUSPENSION IN EXTENDED MODE**. The suspension can rise automatically to assist in clearing the obstacle.

Once extended mode height has been achieved, the driver may request extra lifting if required. This is achieved by pressing up and holding the raise/lower switch for longer than 3 seconds while pressing the brake pedal.

Extended mode is canceled by pressing down on the raise/lower switch **(2)** or when the vehicle speed confirms that the body is no longer lifted or grounded.

Note: *Extended mode cannot be selected manually.*

ACCESS HEIGHT

To select Access height, press the driver's door Access switch **(7)**, or press down on the raise/lower switch **(2)**. If the suspension is at Off-Road height then press down twice on the raise/lower switch. **ACCESS HEIGHT SELECTED** will be displayed in the Message center. Access height can be selected at any speed, but the height will not change until traveling slowly. Access selection is canceled if the vehicle speed does not slow sufficiently within 1 minute.

Note: *Access height may be selected up to 1 minute after the ignition is switched off, provided the driver's door has not been opened.*

Normal driving will automatically return the suspension from Access height to the previous selected setting.

Normal height can be selected by pressing up on the raise/lower switch **(1)**.

LOCKED ACCESS HEIGHT

When the vehicle is at Access height and travelling less than 22mph (35 km/h), press down on the raise/lower switch **(2)**, or press the driver's door Access height switch **(7)**, for longer than 1 second. The system lock indicator **(5)** will illuminate and **SUSPENSION LOCKED AT ACCESS HEIGHT** will be displayed in the Message center.

The vehicle may then be driven slowly at Access height, to assist with maneuvering in confined areas (e.g. multi-storey car parks).

To cancel this mode, press up on the raise/lower switch **(1)** for longer than 1 second or increase the speed to 24 mph (40 km/h).

REMOTE OPERATION

⚠ WARNING

The Smart Key can be operated from inside or outside the vehicle. It is therefore important that it is kept out of the reach of children at all times.

⚠ WARNING

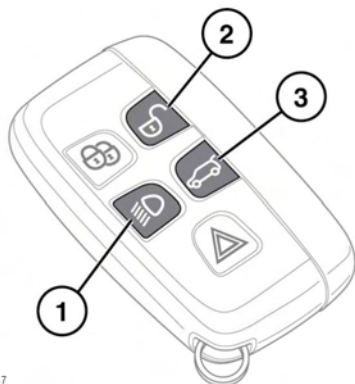
Ensure that the vehicle is clear of people and obstacles before lowering the suspension. The difference between Off-road height and Access height can be 4.9 in (125 mm).

NOTICE

Care should be taken with all height changes when a trailer is attached to the vehicle.

The buttons on the Smart Key may be used to operate the air suspension system, allowing the vehicle to be raised or lowered remotely. This may be useful in attaching a trailer or loading the vehicle.

To change the suspension height using the Smart Key, the vehicle must be stationary, all the doors closed and the hazard warning lamps switched on.



E134947

To raise the vehicle, press and hold the Approach lamps button (1) and the unlock button (2) together.

To lower the vehicle, press and hold the Approach lamps button (1) and tailgate unlock button (3) together.

Note: If there is no height movement after pressing the buttons for 10 seconds or more, or if unexpected behaviour occurs, press the Approach lamps button (1) twice and restart the procedure.

Note: If the starting height is above or below normal height, movement will stop when normal height is reached. Release the Smart Key buttons and press again to continue.

ADAPTIVE DYNAMICS

If a fault is detected the Instrument panel will illuminate either the Critical or General warning lamp. See 67, **CRITICAL WARNING MESSAGE (RED)**67, **GENERAL WARNING/INFORMATION MESSAGE (AMBER)**The warning messages **ADAPTIVE DYNAMICS FAULT** or **SUSPENSION FAULT VEHICLE LEAN WHEN CORNERING** will also be displayed in the Message center. Some reduction in ride comfort may be experienced. If the fault persists, consult a Land Rover Retailer/Authorized Repairer.

SUSPENSION LOWERED FOR SAFETY

NOTICE

The vehicle ride height will be reduced. Exercise caution while driving off-road.

In the event of a fault with the DSC system, the ride height will be lowered to increase vehicle stability. This will be accompanied by a message in the Message center and the indicators on the air suspension control switch will extinguish.

⚠ WARNING

The suspension is lowered to increase vehicle stability and overriding the suspension ride height reduction is not recommended. Doing so could result in a vehicle rollover during extreme maneuvers.

To override the ride height reduction:

1. Press the raise/lower switch.
2. Follow the instructions in the Message center.

***Note:** If the vehicle is driven enthusiastically while the system override is active, a message will be displayed in the Message center as a reminder that a safety system has been bypassed. A further message will provide instructions for canceling the override.*