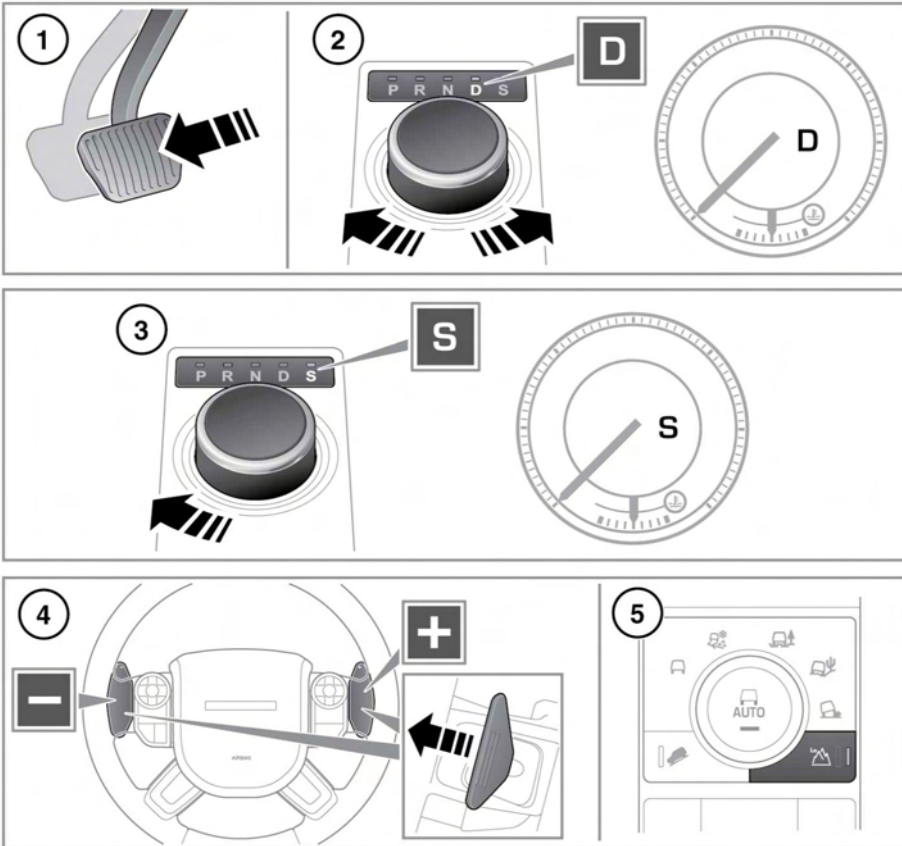


## AUTOMATIC TRANSMISSION



E140336

1. To select Drive (**D**) when the vehicle is stationary, first apply the brake pedal.
2. With the rotary selector, rotate to Drive (**D**). The paddle shifts can be used in this mode.

**Note:** Gear selection will revert back to fully automatic **D** mode if use of the paddles is not maintained.

To manually return to fully automatic **D** mode, pull and hold the right paddle for 2 seconds.

- D** will appear in the instrument panel and the LED by the selector will illuminate.
3. Press the selector down and rotate to **S** to select Sport mode.  
**S** will appear in the instrument panel and the LED by the selector will illuminate.
4. Manual gear selection (CommandShift™) can be used when Sport (**S**) is selected.

Use the paddles on the steering wheel for gear selection. Pull the left paddle (-) for down-shifts and the right paddle (+) for up-shifts. To return to the fully automatic sport mode, pull the right paddle for 2 seconds.

To return to drive mode move the selector back to the **D** position.

5. Press the **Lo** button to select low range gears.

Low range gears should only be used in situations where low speed maneuvering is necessary, including more extreme off-road conditions. Do not attempt to use low range gears for normal road driving.

If the vehicle detects a transmission system fault, a warning message will be displayed in the Message center and only limited gears may become available. Seek qualified assistance immediately.

## **⚠ WARNING**

**Park (P) should be engaged and the parking brake applied when the vehicle is stationary. The vehicle can move unexpectedly with any other gear position selected, which may result in death or serious injury.**

## **⚠ WARNING**

**Before exiting the vehicle, always ensure that the gear selector is in the Park (P) position, the engine is turned off, the parking brake is applied and the Smart Key is removed from the vehicle.**

## **NOTICE**

*Do not use auxiliary equipment, such as roller generators that are driven by only one or two wheels of the vehicle, as they will cause failure of the transfer gearbox.*

## **NOTICE**

*Never select Park (P) while the vehicle is in motion.*

## **NOTICE**

*Never select Reverse (R) while the vehicle is in forward motion.*

## **NOTICE**

*Never select a forward gear while the vehicle is in rearward motion.*

## **NOTICE**

*Do not rev the engine or allow it to run above normal idle speed, while selecting D or R, or while the vehicle is stationary with any gear selected.*

## **NOTICE**

*While the transmission is set to permanent manual mode (i.e., using the paddles to change gear while in Sport mode) and Dynamic mode is selected, transmission up-shifts are fully controlled by the driver. This means that the transmission will not change up a gear automatically, even if the engine rev limit is reached.*

## **NOTICE**

*Do not allow the vehicle to remain stationary for a sustained period, with a gear selected and the engine running. Always select P or N if the engine is to idle for a prolonged period.*

**P** should normally be selected before switching off the engine. If any other gear is selected at turn off, the selector will move to **P** before retracting into the center console console.

If the engine is switched off with **N** selected, the system will wait for 10 minutes before selecting **P**. This time delay allows the vehicle enough time to be conveyed through a car wash.

If the selector fails to rotate to **P** when the engine is switched off, when the engine is next switched on, **P** must be selected before the engine will start.

In the event of a vehicle breakdown, the transmission will automatically select **P**. This prevents the vehicle from being towed on all 4 wheels. Therefore, vehicle recovery should only be undertaken by suitably qualified personnel.

If the rotary selector is obstructed, remove the obstruction and then start the engine. The selector should elevate as normal. If the selector fails to elevate, it can be used in the lowered position, but be aware that it will not automatically select **P** when the engine is switched off. **P** should be selected manually. The fault should be rectified by a Dealer/Authorized Repairer at the earliest opportunity.

## MANUAL GEAR SELECTION

When Drive (**D**) is selected, manual mode may be temporarily accessed by operating the steering wheel mounted shift paddles.

While in Drive (**D**) temporary manual mode will be held while the driver is accelerating, decelerating, cornering or continuing to request shifts via the paddles. Temporary manual mode will be deactivated if the engine is over-revved or laboured, to prevent transmission and/or engine damage.

If continued use of manual mode is required, select Sport (**S**), to activate permanent manual mode. Permanent manual mode will be deactivated if the engine is over-revved or laboured, to prevent transmission and/or engine damage.

## HILL DESCENT

With Hill Descent Control (HDC) selected in either Drive (**D**), Sport (**S**) or manual gear selection (CommandShift™) modes, a low gear will be selected and maintained to provide maximum engine braking. Should the selector be moved to Drive (**D**) from the Sport (**S**) mode or if CommandShift™ is deactivated, the selected gear will be maintained until the descent is completed. See **139, HDC CONTROLS**.

## STATIONARY RANGE CHANGING

With the vehicle stationary and the engine running, select Neutral (**N**).

Press the **Lo** range button and release. The range change status will be confirmed after several seconds.

## RANGE CHANGE INDICATORS

While the **Hi** range transmission is in use, no range indicators are illuminated



In **Lo** range, the green warning lamp in the Message center and the **Lo** range status indicator lamp on the **Lo** button will illuminate.

While a range change is in progress, the indicator lamps will flash as follows:

### Hi to Lo change:

- The **Lo** range indicator lamps flash during the change and then illuminate constantly.
- The message **LOW RANGE SELECTED** is briefly displayed in the Message center.

### Lo to Hi change:

- The **Lo** range indicator lamps flash during the change.
- The **Lo** range indicator lamps extinguish when the change is complete.

- The message **HIGH RANGE SELECTED** is briefly displayed in the Message center.

### RANGE CHANGING ON THE MOVE

The recommended method of changing range is with the vehicle stationary. For experienced off-road drivers, a change from **Lo** to **Hi** while on the move can be accomplished, as detailed below.

**Note:** *Changing from Hi to Lo can be performed only with the vehicle stationary.*

### CHANGING FROM LOW TO HIGH RANGE

With the vehicle traveling no faster than 38 mph (60 km/h), select Neutral (**N**). Press and release the **Lo** button to select **Hi** range.

**Note:** *If the Lo button is pressed before N is selected, the message **SELECT NEUTRAL FOR RANGE CHANGE** will be displayed in the Message center.*

Indication of the range change status will be displayed in the Message center.

Once complete, select Drive (**D**).

### LIMP-HOME MODE

**Note:** *The driver should be aware that the vehicle's performance will be reduced and must take this into account when driving. Use of the gear shift paddles will be disabled. In this event, seek qualified assistance as soon as possible.*

In the event of an electrical or mechanical failure, transmission operation will be limited. **P**, **R**, **N**, **D** and **S** may still be used to enable the vehicle to be driven to a safe area.

Some faults will cause the selector to be locked in position until the ignition is switched off. If the selected range flashes, it signifies that the driver request cannot be engaged. Re-select **N** and repeat the attempt.

If the transmission is still unable to select the requested gear, contact your Retailer/Authorized Repairer.