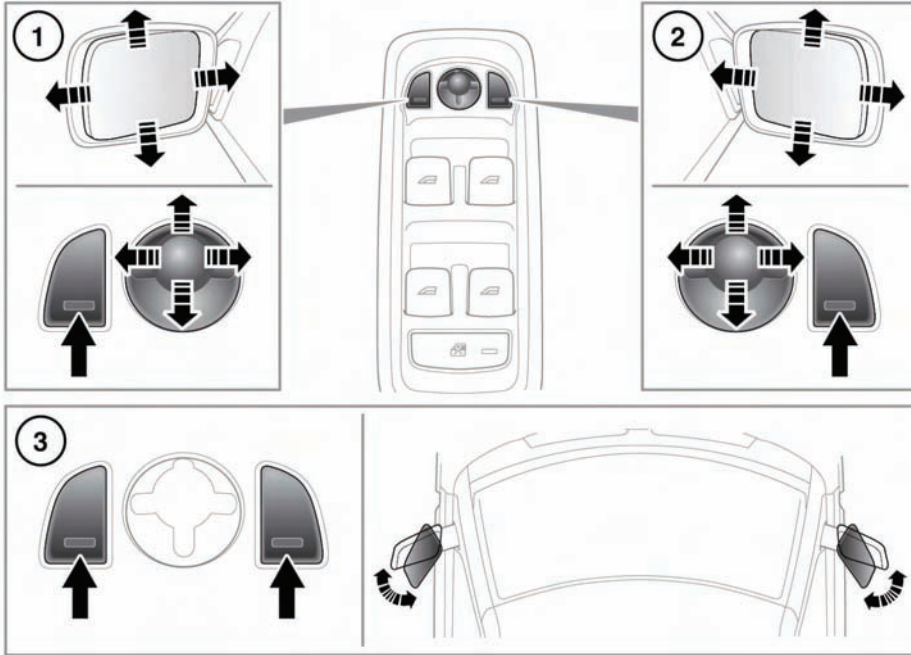


## EXTERIOR MIRRORS



E134837

1. Left mirror adjustment.
2. Right mirror adjustment.
3. Press both switches together to fold/unfold the mirrors.

**Note:** If the mirrors are manually folded or knocked into the folded position accidentally, the mirror head will be loose. To re-engage the mechanism, fold, then unfold the mirrors using the switches.

A thermal cut-out will temporarily disable the powerfold feature if the switches are operated repeatedly.

Powerfold will only operate if the vehicle is stationary, or traveling at 12 mph (20 km/h) or less.



The mirrors can be configured by your Land Rover Retailer/Authorized Repairer to automatically fold when the vehicle is locked, and unfold when it is unlocked.

**Note:** If the mirrors were folded using the switches, they will not unfold when the vehicle is unlocked.

## MIRROR DIP WHEN REVERSING

Selecting reverse gear will cause the door mirrors to automatically adjust, providing an improved viewing angle for reversing.

The exact dipped position can be adjusted when the mirrors are dipped. The next time reverse is selected, the newly adjusted position will be selected.

When the gear selector is moved out of reverse, the mirrors will return to their previous position.

**Note:** *If vehicle speed exceeds 4 mph (7 km/h) in reverse, the mirrors will return to their normal driving position for enhanced visibility.*

The automatic mirror dip feature can be enabled or disabled from the Vehicle Set-up menu. See **62, INSTRUMENT PANEL MENU..**