

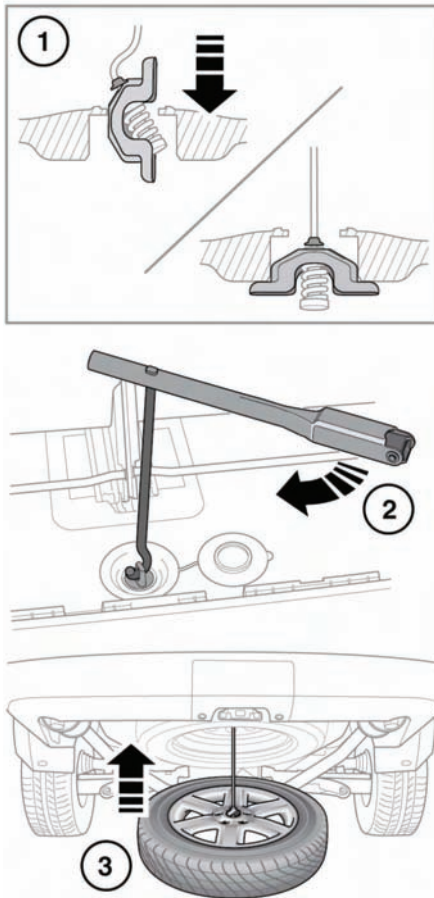
STOWING THE CHANGED WHEEL

⚠ WARNING

Do not stow the wheel while the vehicle is raised on the jack.

NOTICE

Do not use power tools to raise the spare wheel. Doing so may damage the mechanism.



E147458

- Place the wheel under the vehicle with the styled face uppermost.

- Place the lifting lug through the center of the wheel (1) and locate it in position.
- Winch up the wheel using the jack handle and wheel brace to turn the wheel hoist winch spindle clockwise. (2).
- Continue to wind up until the wheel hoist reaches its upper position (3). This is indicated by an audible noise from the winch and a distinct movement, which will be felt through the jack handle and wheel brace.
- Check that the wheel has returned to the same position as the spare wheel was in before it was removed. If in doubt, lower the winch slightly, adjust the wheel position and repeat the previous step above.

The wheel **must** be securely retained in its correct position by the winch mechanism, or it could become loose.

- Replace the cover over the wheel winch spindle. As the underside of the cover is exposed to the same conditions as the underside of the vehicle, ensure that it is firmly in place.

Replace all the tools into the vehicle tool kit, see **206, TOOL KIT**. Make sure they are stowed securely.

Note: If for any reason, the spare wheel, or the replaced wheel is not to be fitted back in the vehicle's hoist, the wheel hoist should be rewound as follows.

Position the lifting lug level on the cable, and wind up the hoist mechanism until it reaches its uppermost position. This is indicated by an audible noise from the winch and a distinct movement, which will be felt through the jack handle and wheel brace.