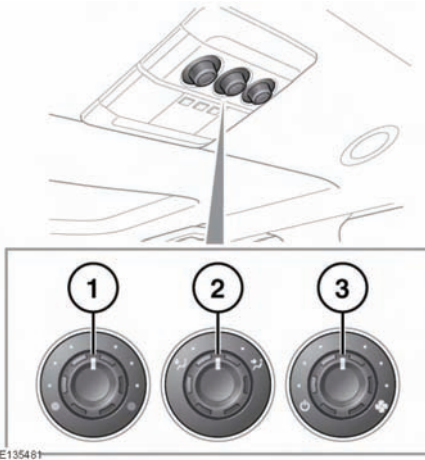


**NOTICE**

*Do not attach labels to the rear glass. Do not scrape or use abrasive materials to clean the inside of the screen.*

## REAR CLIMATE CONTROL



1. Temperature control: Clockwise rotation increases the temperature.
2. Distribution control: Turn to the relevant icon to direct airflow. The control may be turned to a position between icons to split airflow between different vents.
3. Blower control.

**Note:** *These controls only operate when the rear environment button is pressed twice, enabling rear manual operation.*