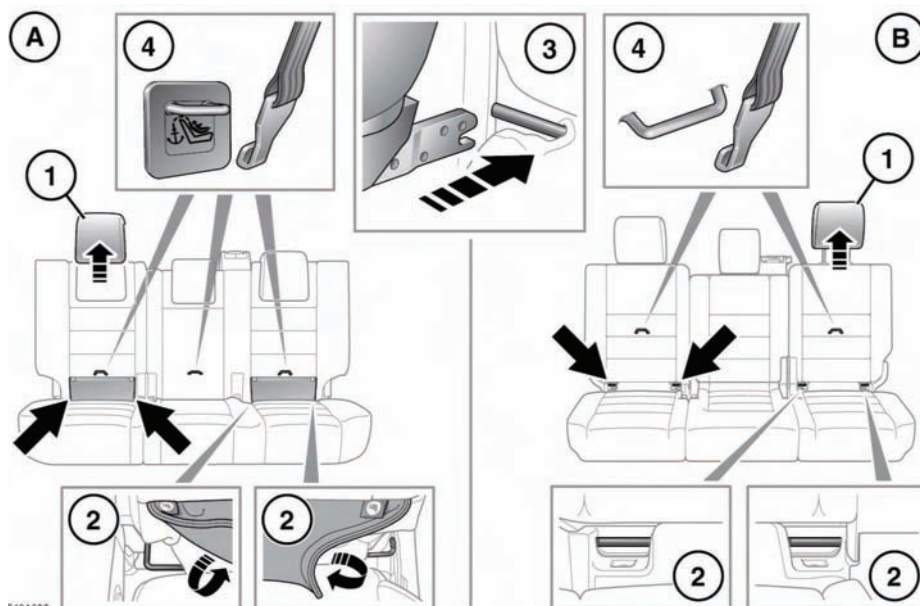


## LATCH CHILD RESTRAINT ANCHOR POINTS



E134822

**A.** 5-Seat vehicles.

**B.** 7-Seat vehicles.

LATCH anchorage child restraints can only be fitted to the outer seat positions on the second row of seats.



This symbol is shown on a label sewn into the seats to indicate the position of the LATCH lower anchorages.

To install a LATCH anchorage child seat:

1. Raise or remove the head restraint.
2. Lift the velcro flap to expose the LATCH anchor bars.

For child seats fitted with rigid lower LATCH connectors, insert the protective guides supplied with the child seat.

3. For child seats fitted with **rigid** lower LATCH connectors, slide the child seat locking mechanism into the protective sleeves and onto the anchor bars.

For child seats fitted with **non-rigid** LATCH connectors, connect the lower tether strap hooks to the anchor bars and tighten the straps.

4. If an upper tether is fitted to the child seat, ensure it is properly secured to the upper tether anchorages on the rear of the seats.

Test the security of the child restraint. To do this, attempt to pull the restraint away from the vehicle seat and twist the restraint from side to side. Even if the restraint appears secure, you should still check the anchor points visually, to ensure correct attachment.