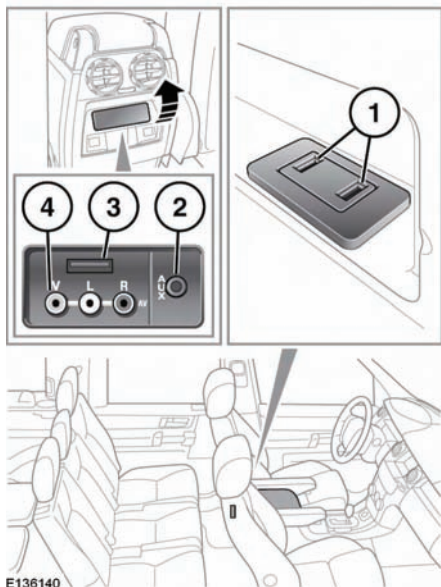


CONNECTING A DEVICE

NOTICE

Always refit the rubber cover when a portable device is not plugged in. This prevents damage to the sockets. The cover is not waterproof.



1. USB sockets.
2. 3.5 mm AUX socket.
3. Rear media USB.
4. Rear media AV sockets.

Connect the device into the appropriate socket.

Note: Use the cable supplied with your media device to connect to the USB socket.

NOTICE

Read the manufacturer's instructions for any device, before it is connected to the audio system. Ensure that the device is suitable, and comply with any instructions regarding connection and operation. Failure to do so may result in damage to the vehicle's audio system or the auxiliary device.

When an iPod is connected, playback will continue from the point at which it was last playing, provided the iPod battery is in a good state of charge.

NOTICE

Do not plug non-audio devices into the USB port.

Note: A USB hub cannot be used to connect more than one USB device to the audio unit.

Note: Devices connected to the USB ports will be charged, but devices that are fully discharged will not play.

Note: Options such as **Repeat** and **Mix** relate to the device currently playing, they will not apply to any subsequent device.

The 3.5mm AUX socket allows additional equipment (e.g. personal stereos MP3 player, hand-held navigation unit, etc.) to be connected to the audio system.

Note: iPod shuffle may be connected via the AUX socket.

Note: On vehicles fitted with rear seat entertainment, additional Audio/Visual sockets are provided. This allows auxiliary equipment (such as a video game console) to be linked to the rear DVD screens. For installation information, please refer to the manufacturer's instructions.

PLAYING A PORTABLE DEVICE

If you are using a USB mass storage device or approved iPod, you can control playback using the touch screen controls.

If you are using a Bluetooth® device, you can control playback using the touch screen, but some controls are unavailable.

If you are using any portable media device via the AUX socket, then you must control playback from the device itself.