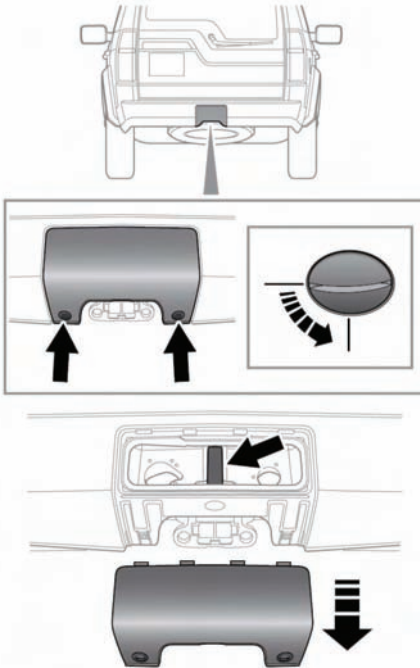


REAR TOWING POINT

The rear towing point is located behind a removable panel in the lower rear bumper.

The rear towing point may be used to tow another vehicle if required.



E135510

1. Rotate each of the fasteners 90 degrees counter-clockwise with a coin (or similar), to release the lower edge.
2. Rotate the cover to release the hooks at the top.
3. Remove the cover.
4. To refit, position the cover in place and ensure that the four hooks on the top edge engage in the body panel.
5. Rotate the fasteners 90 degrees clockwise to secure the cover.