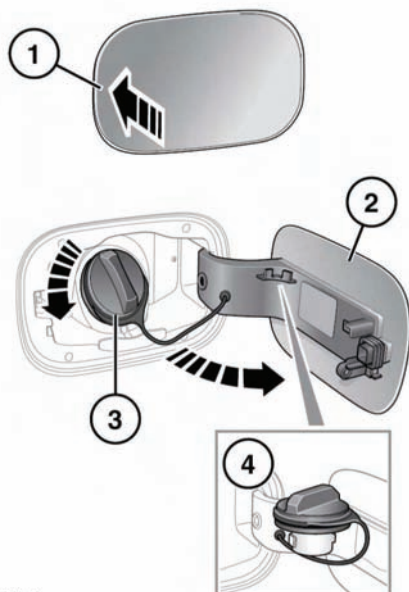


FUEL FILLER FLAP

⚠ WARNING

Take note of all warnings and instructions given on the label affixed to the inside of the filler flap. Failure to do so may result in injury or death.



E134864

The fuel filler flap is located on the right-hand side of the vehicle, at the rear.

1. Press the left side of the flap to open.
2. Open the flap fully. The label on the inside of the flap indicates the correct fuel to use.
3. Twist the cap counter-clockwise to undo.
4. Use the retaining clip to keep the filler cap out of the way while fuelling.

FUEL FILLER

⚠ WARNING

When refueling ensure that all windows, doors, and sunroof are fully closed, particularly if young children or animals are in the vehicle.

⚠ WARNING

Do not attempt to fill the tank to its maximum capacity. If the vehicle is to be parked on a slope, in direct sunlight or high ambient temperature, expansion of the fuel could cause spillage.

NOTICE

Check the fuel pump information carefully, to ensure that you are putting the correct fuel into the vehicle.

NOTICE

If the vehicle is filled with incorrect fuel it is essential that you seek qualified assistance before you start the engine.

Filling station pumps are equipped with automatic cut-off sensing to avoid fuel spillage. Fill the tank until the filler nozzle automatically cuts-off the supply. Do not attempt to fill the tank beyond this point.

FUEL TANK CAPACITY

Avoid the risk of running out of fuel and never intentionally drive the vehicle when the fuel gauge indicates that the tank is empty. When refueling your vehicle after the fuel gauge reads empty, you may not be able to add the fuel quantity shown below, as there will be a small reserve remaining in the tank.

Total tank capacity (usable)	23 U.S. gallons (86 liters)
Fuel specification	Unleaded 91 Octane