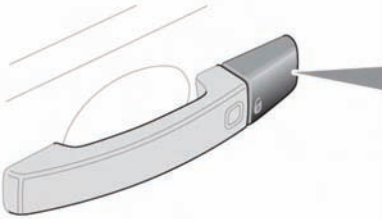
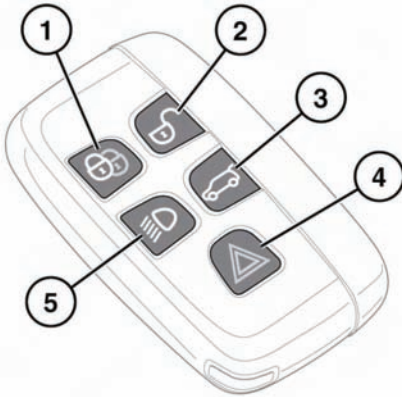


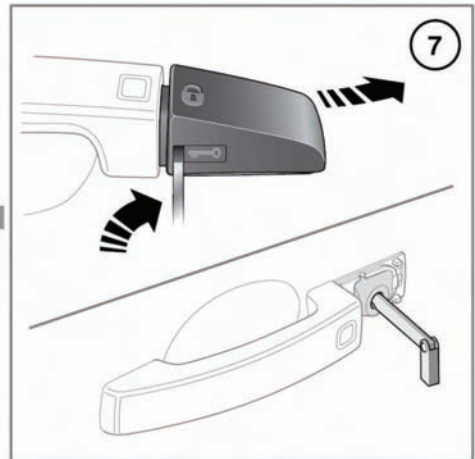
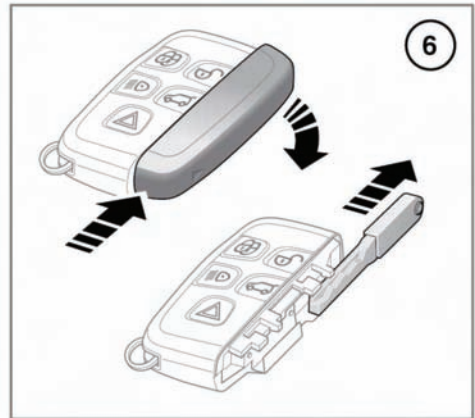
UNLOCKING THE VEHICLE



E146643

⚠ WARNING

To prevent accidental or unauthorized operation, never leave the Smart Key unattended in the vehicle. Never leave children or animals unattended in the vehicle. The vehicle can be operated when the Smart Key is inside the vehicle.



Note: The operational range of the Smart Key will vary considerably depending on atmospheric conditions and interference from other transmitting devices.

Note: If any door or the tailgate is unlocked 10 times within a short period, the latch is disabled for approximately one minute.

Entering the vehicle

The vehicle is supplied with 2 Smart Keys. The Smart Keys act as remote controls for the locking and alarm system, and allow the vehicle to be locked, unlocked and driven without the use of a conventional key. See **11, KEYLESS ENTRY**, **14, LOCKING AND ARMING THE ALARM** and **78, STARTING THE ENGINE**.

1. Lock: Press once to lock the vehicle. All doors and the tailgate will lock (but can still be unlocked from inside) and the perimetric alarm will arm. See **14, LOCKING AND ARMING THE ALARM**.
2. Your vehicle can be unlocked using either Single or Multi-point entry.
 - Single point entry. The first press unlocks the driver's door and enables the other doors to be opened from the inside. The hazard warning lamps will flash twice to indicate that the vehicle is unlocked and the alarm has been disarmed. A second press unlocks the passenger doors and the loadspace.
 - Multi point entry. Press briefly to unlock all the doors and loadspace and to disarm the alarm. The hazard warning lamps will flash twice to indicate that the vehicle is unlocked and the alarm has been disarmed.

To change from Single to Multi-point entry (or vice versa), press both the lock and unlock buttons simultaneously for three seconds. The hazard warning lamps will flash twice to confirm the change.

Note: *If a door or the tailgate are not opened within 1 minute of unlocking the vehicle, doors will lock again automatically.*

3. Tailgate release:

Press briefly to release the tailgate. The vehicle security system will remain active while the tailgate is open, but intrusion and

inclination sensing systems will be disabled.

On closing the tailgate, the hazard warning lamps will flash after a few seconds to confirm the full alarm system has been reactivated (if previously armed). Also see **12, OPENING AND CLOSING THE TAILGATE**.

4. Panic alarm:

- Press and hold for 3 seconds (or press 3 times within 3 seconds) to activate the horn and the hazard lamps.

Note: *The horn and hazard lamps will switch off automatically after 2 minutes and 45 seconds.*

- Once active for more than 5 seconds, the alarm can be cancelled by pressing the button and holding for 3 seconds (or pressing 3 times within 3 seconds).
- The emergency alarm will also be cancelled if a valid Smart Key is present when the START/STOP button is pressed.

5. Approach lighting:

- When approaching the vehicle during darkness, press to switch on the approach illumination. Press again to turn the approach lamps off.
- The approach illumination period set at the factory is 30 seconds. This delay period may be configured to provide illumination lasting between 0 and 180 seconds. See **62, INSTRUMENT PANEL MENU**.

6. Smart Key emergency key:

- Slide and remove cover to expose the emergency key.
- Remove the emergency key and unfold.