

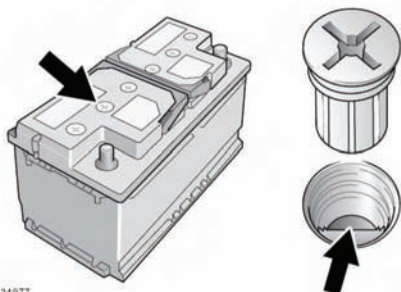
Vehicle battery

NOTICE

Do not allow battery fluid to come into contact with fabrics or painted surfaces. If battery fluid comes into contact with any surface, the surface should be washed down immediately with plenty of clean water.

Your vehicle is fitted with a low maintenance battery which is located under the hood.

In hot climates more frequent checks of the battery fluid level and condition are required. If necessary, the battery cells can be topped up using distilled water.



Unscrew the six cell plugs and store carefully.

Check that the surface of the battery fluid is level with the plastic level indicator. If necessary, top up with distilled water, but never overfill. Refit the six cell plugs.

CONNECTING JUMP LEADS

⚠ WARNING

Always wear appropriate eye protection when working with batteries.

⚠ WARNING

Make sure both batteries are of the 12 volt type and that the jump leads have insulated clamps and are approved for use with 12 volt batteries.

⚠ WARNING

Do not disconnect the discharged battery.

⚠ WARNING

Ensure the bodywork of the donor and disabled vehicles do not touch.

⚠ WARNING

To avoid serious injury use extreme caution when removing the jump leads as the engine will be running on the previously disabled vehicle. This means that you may be working close to components which are moving at high speed, carry high voltage, or may be hot.

NOTICE

Make sure that the slave battery or starting aid is a 12 volt device.

Note: Before connecting jump leads (booster cables) ensure that the battery connections on the disabled vehicle are correct, and that all electrical equipment has been switched off.

1. Connect one end of the positive (Red) jump lead (booster cable) to the positive terminal on the donor vehicle's battery.
2. Connect the other end of the positive jump lead to the positive terminal on the disabled vehicle's battery.
3. Connect one end of the negative (Black) jump lead to the negative terminal on the donor vehicle's battery.
4. Connect the other end of the negative jump lead to a suitable earth point on the disabled vehicle. The earth point should be at least 20 inches (0.5 meters) away from the battery, and as far as possible from any fuel or brake pipes.

Note: Check that all cables are clear of any moving components, and that all four connections are secure.