

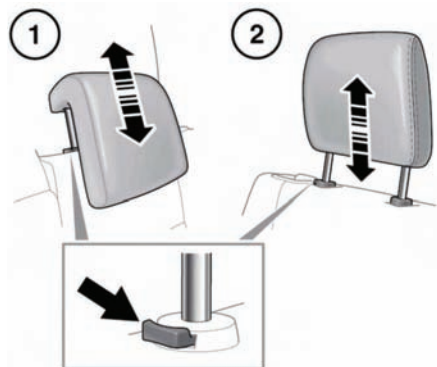
REAR HEAD RESTRAINTS

⚠ WARNING

Adjust the head restraint so that the top of the head restraint is above the center line of the head. An incorrectly adjusted head restraint increases the risk of death or serious injury in the event of a collision.

⚠ WARNING

Do not drive or carry passengers with the head restraint removed from an occupied seat. The absence of a correctly adjusted head restraint increases the risk of neck injury in the event of a collision.



E134912

1. 5-seat vehicles.
2. 7-seat vehicles.

To adjust:

- Press the locking button on the collar.
- Raise or lower the head restraint until the top of the restraint is level with the top of the passenger's head.

To remove:

- Press the locking button on the collar.
- Lift the head restraint out of the seat.

⚠ WARNING

Always store a removed restraint securely.

To refit:

- Ensure the head restraint is facing the correct direction.
- Insert the stems of the restraint into the sockets on the seatback.
- Push the restraint downwards until at least the first click.