

ELECTRIC PARKING BRAKE (EPB)

⚠ WARNING

Do not rely on the parking brake to hold the vehicle stationary if the brake warning lamp is illuminated or the EPB warning lamp is flashing. Seek qualified assistance urgently.

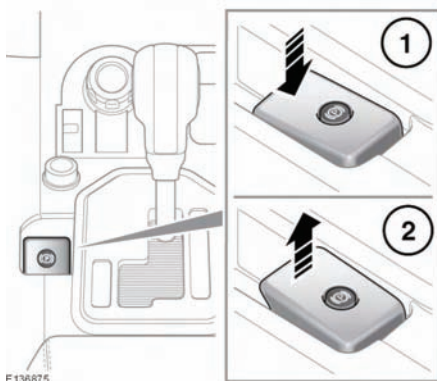
NOTICE

The parking brake operates on the rear wheels. Therefore, secure parking of the vehicle is dependent on being on a hard and stable surface.

NOTICE

Do not rely on the parking brake to operate effectively, if the rear wheels have been immersed in mud or water.

Note: If the vehicle is used in severe off-road conditions (e.g. wading, deep mud, etc.), additional maintenance and adjustment of the parking brake will be required. Consult your Land Rover Retailer/Authorized Repairer.



The switch which operates the parking brake is mounted on the center console to the left side of the gear selector.

To disengage the parking brake (1): With the ignition system on or with the engine running, apply the foot brake and press the parking brake switch down.

If the parking brake is applied while the vehicle is stationary and **D** or **R** is selected, applying the throttle will automatically release the parking brake.

The parking brake is also automatically released when the gear selector is moved from the **P** position.

If the parking brake is inadvertently applied when the vehicle is moving at above 1.8 mph (3 km/h), **Caution! Park Brake Applied** is displayed in the message center, the warning indicator in the instrument panel will illuminate and a warning chime will sound.

If the parking brake is applied while the vehicle is moving, releasing the switch will disengage the parking brake. The parking brake cannot be applied when the vehicle is moving, if the accelerator pedal is pressed.

Note: If the vehicle is in motion, the parking brake should only be used as an emergency brake.

NOTICE

Always apply the parking brake when the vehicle is parked.

To engage the parking brake (2): Pull the parking brake switch upwards and release. The switch will return to the neutral position.

The Parking brake warning lamp on the instrument panel will illuminate, see **57, PARKING BRAKE (RED)**.

The Drive Away Release feature allows the parking brake to release automatically as the vehicle is driven away.

The warning lamp in the instrument panel will remain on for a short time, if the parking brake is applied when the ignition system is on after the engine is switched off.

If a fault in the system is detected, **Park Brake Fault** or **Cannot Apply Park Brake** will be displayed in the message center. Seek qualified assistance as soon as possible.

If the battery has been discharged or disconnected, **Apply Foot And Park Brake** will be displayed in the message center when the ignition is next switched on. Depress the foot brake and pull the parking brake switch up to apply the parking brake. This is required to reset the parking brake system. The parking brake will now function correctly.