

## NOTICE

*If the brake pedal is applied when the engine **START/STOP** button is pressed, the engine will start.*

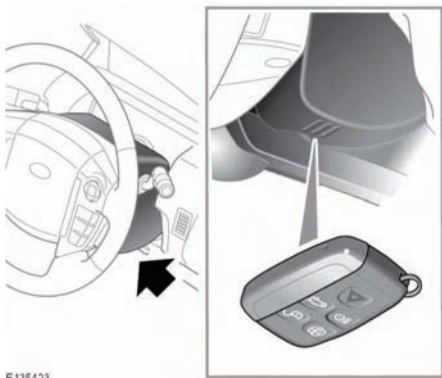
## ROLLING RE-START

If the engine is switched off while the vehicle is moving, a rolling restart can be initiated by selecting Neutral (**N**) and pressing the engine **START/STOP** button.

## KEYLESS START BACKUP

If the vehicle has been unlocked using the emergency key blade or the Smart Key is not detected by the vehicle, it will be necessary to use the keyless start backup to disarm the alarm and start the engine.

The keyless start backup can only be used when the message **Smart Key Not Found - Refer to Handbook** is displayed in the message center.



1. Position the Smart Key flat against the side of the steering column with the buttons facing outwards.

**Note:** *The steering column has markings on the side to aid placement of the Smart Key.*

2. Firmly depress the brake pedal.
3. Press and release the engine **START/STOP** button.

Once the engine has started, the brake pedal can be released if it is safe to do so.

If the Smart Key is not recognized, or the engine still fails to start, consult a Land Rover Retailer/Authorized Repairer.

## IF THE ENGINE FAILS TO START

**Note:** *If the engine fails to crank when the engine **START/STOP** button is pressed and there has been a recent collision, the fuel system inertia switch may have been tripped. Seek qualified assistance.*

Make sure that the brake pedal is not depressed. Switch on the ignition (see **78, STARTING THE ENGINE**) and check the instrument panel for warning lights and the message center for warning messages (see **62, INSTRUMENT PANEL MENU**). Seek qualified assistance if necessary.

Switch off the ignition.

To reset the immobilizer and alarm system use the valid Smart Key to lock and unlock the vehicle (see **9, UNLOCKING THE VEHICLE**).

If the engine persistently fails to start.

1. Make sure that a valid Smart Key is inside the vehicle.
2. Press and hold the engine **START/STOP** button until the warning lamps illuminate.
3. Firmly depress the brake pedal.
4. Ensure that Park (**P**) or Neutral (**N**) is selected.
5. Slowly depress the accelerator pedal fully and hold it in the fully depressed position.
6. Press and release the engine **START/STOP** button. The engine will begin to crank.

## Starting the engine

7. Release the accelerator pedal when the engine starts.

Once the engine has started, the brake pedal can be released if it is safe to do so.

If the engine still fails to start, or fails to crank, consult a Land Rover Retailer/Authorized Repairer.