

## TELEPHONE SYSTEM ICONS



Connect. Use to send or accept a call and access last 10 calls list.



Disconnect. Use to end or reject a call.



No phone connected.



Phone signal strength indicator.



Phone battery level indicator.



Bluetooth. Indicates that a Bluetooth® device is connected.



Indicates that a Bluetooth® device is paired.



Voicemail. Press and hold to dial the stored voicemail number.

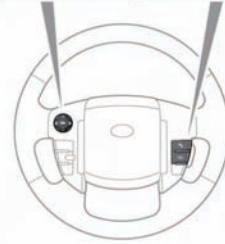
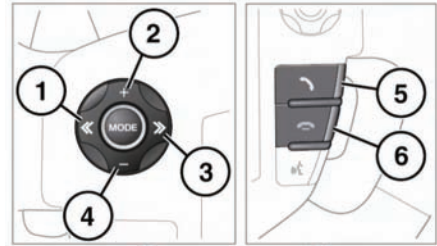


Scroll bar up arrow. Use to scroll up lists of detected phones, calls or phonebook entries.



Scroll bar down arrow. Use to scroll down lists of detected phones, calls or phonebook entries.

## STEERING WHEEL CONTROLS



E135926

1. Press to scroll up through a displayed list.
2. Press to increase volume when in a call.
3. Press to scroll down through a displayed list.
4. Press to decrease volume when in a call.
5. Press to answer an incoming call. Press and release to access last 10 dialed list or dial a number/contact. Press and hold to access phonebook list view.
6. Press to end a call or to reject an incoming call.

**Note:** When scrolling through a phonebook or last 10 list, each contact is also displayed in the message centre.

## CALL VOLUME

The phone call volume is operated by the audio system's volume control.

If the audio system is in use when a phone call is active, the audio system source is suppressed for the duration of the call.