
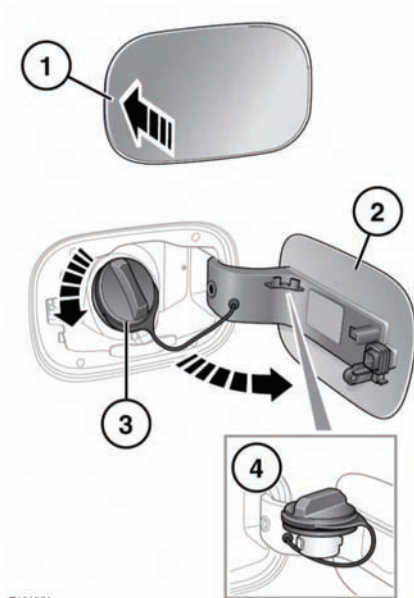


FUEL FILLER FLAP

-  Take note of all warnings and instructions given on the label affixed to the inside of the filler flap.





E134864


The fuel filler flap is located on the right-hand side of the vehicle, at the rear.


1. Ensure that the vehicle is fully unlocked, and press the left side of the flap to open.
2. Open the flap fully.
3. Twist the cap anticlockwise to undo.
4. Use the retaining clip to keep the filler cap out of the way whilst fuelling.


FUEL FILLER

-  When refuelling ensure that all windows, doors, and sunroof are fully closed, particularly if young children or animals are in the vehicle.

-  Do not attempt to fill the tank to its maximum capacity. If the vehicle is to be parked on a slope, in direct sunlight, or high ambient temperature, expansion of the fuel could cause spillage.

-  Do not operate the auxiliary heater when refuelling the vehicle. Doing so may cause fuel vapours to combust causing a fire/explosion.


-  Check the fuel pump information carefully, to ensure that you are putting the correct fuel into the vehicle.

-  If the vehicle is filled with incorrect fuel it is essential that you seek qualified assistance before you start the engine.

Filling station pumps are equipped with automatic cut-off sensing to avoid fuel spillage. Fill the tank until the filler nozzle automatically cuts-off the supply. Do not attempt to fill the tank beyond this point.

Note: Filling station pumps used for diesel commercial vehicles deliver fuel at a higher rate than normal. The higher fill rate can cause premature cut-off and may cause fuel spillage. Therefore, it is recommended that only standard light vehicle pumps are used.

WATER IN FUEL

-  If the warning **WATER IN FUEL SEE HANDBOOK** is displayed in the message centre, an excessive amount of water has collected in the fuel filter bowl. Seek assistance from a Land Rover Dealer/Authorised Repairer to have the filter drained as soon as possible.