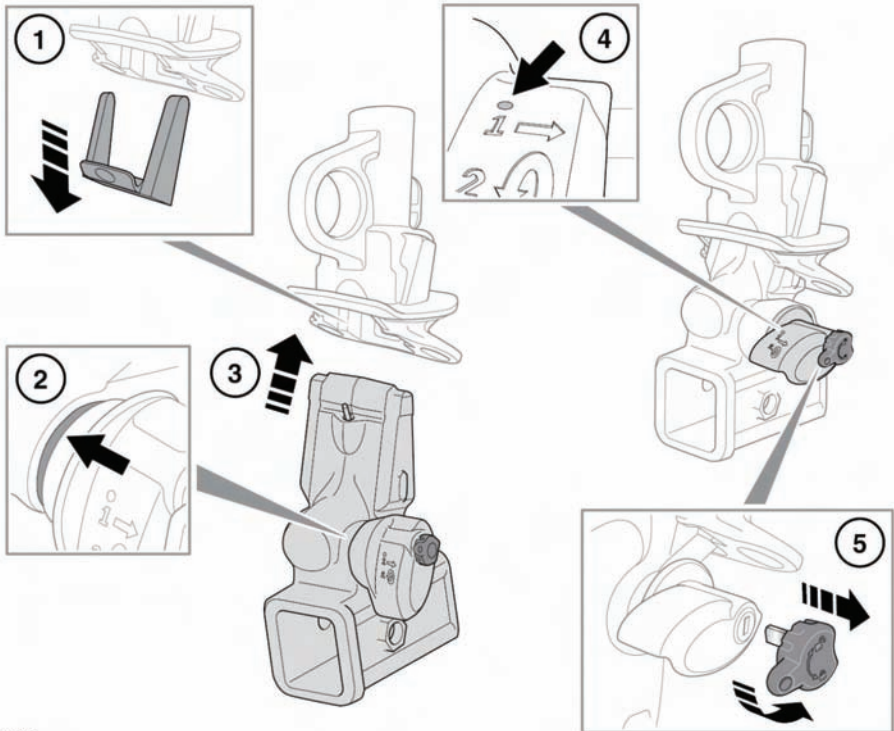


**Note:** The key cannot be removed when the tow ball has been detached.

## FITTING THE DETACHABLE DRAWBAR RECEIVER (Australia only)



E134930

1. Remove the protective cover from the vehicle mounting and stow it into the drawbar receiver stowage area.
2. The receiver can be installed only when the green locking lever is in the unlocked position.
3. Insert the receiver into the vehicle mounting and push firmly upwards until it locks into position.
4. The red marker must be completely covered by the green locking lever.

5. Unfold the key and turn it anticlockwise to lock the receiver, before inserting a drawbar. Remove the key and store in a safe place.

When the detachable drawbar receiver is not required for immediate use, it should be removed and stowed in the appropriate place.

## REMOVING THE DETACHABLE DRAWBAR RECEIVER

Removal of the drawbar receiver is the reverse of fitting.