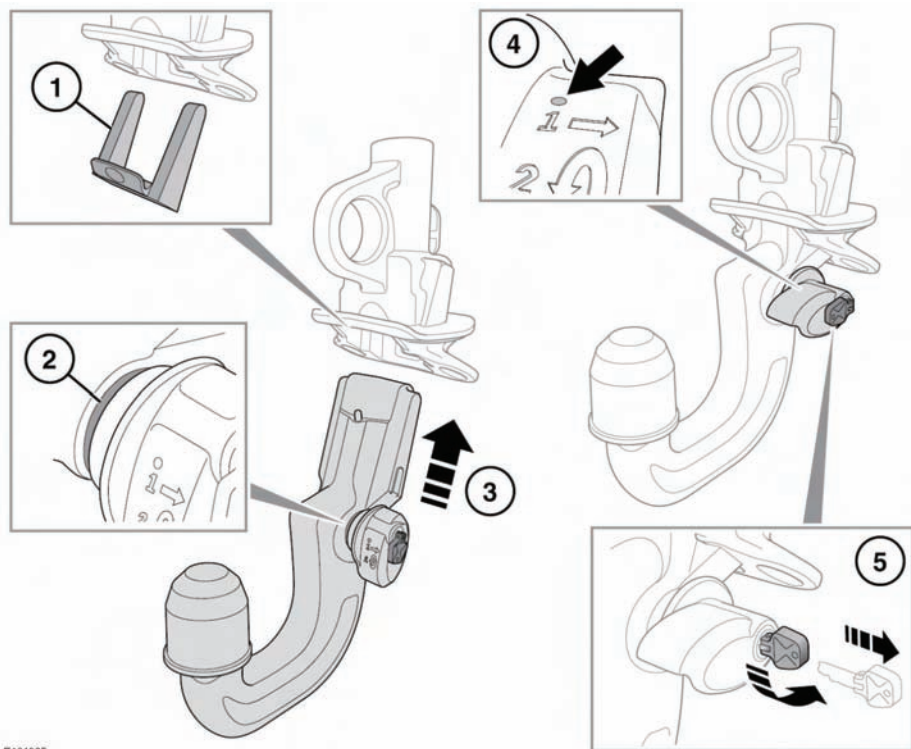



FITTING THE DETACHABLE TOW BALL



E134925

1. Remove the protective cover from the tow ball and stow it in the tow ball storage area.
2. The tow ball can only be installed when the green locking lever is in the unlocked position.
 **Do not exceed the maximum nose weight for the detachable tow ball. See 70, TOWING WEIGHTS.**
3. Insert the tow ball into the mounting and push firmly upwards until the tow ball locks into position.
4. The red marker must be completely covered by the green locking lever.

5. Turn the key counterclockwise to lock the tow ball and remove the key before towing.

When the detachable tow ball is not required for immediate use, it should be removed and stowed in the appropriate place.

If there is a requirement for towing with a greater nose weight, for example, commercial or constant use towing, Land Rover Accessories have available a heavy duty multi-height tow bar system.

REMOVING THE DETACHABLE TOW BALL

Removal of the tow ball is the reverse of fitting.