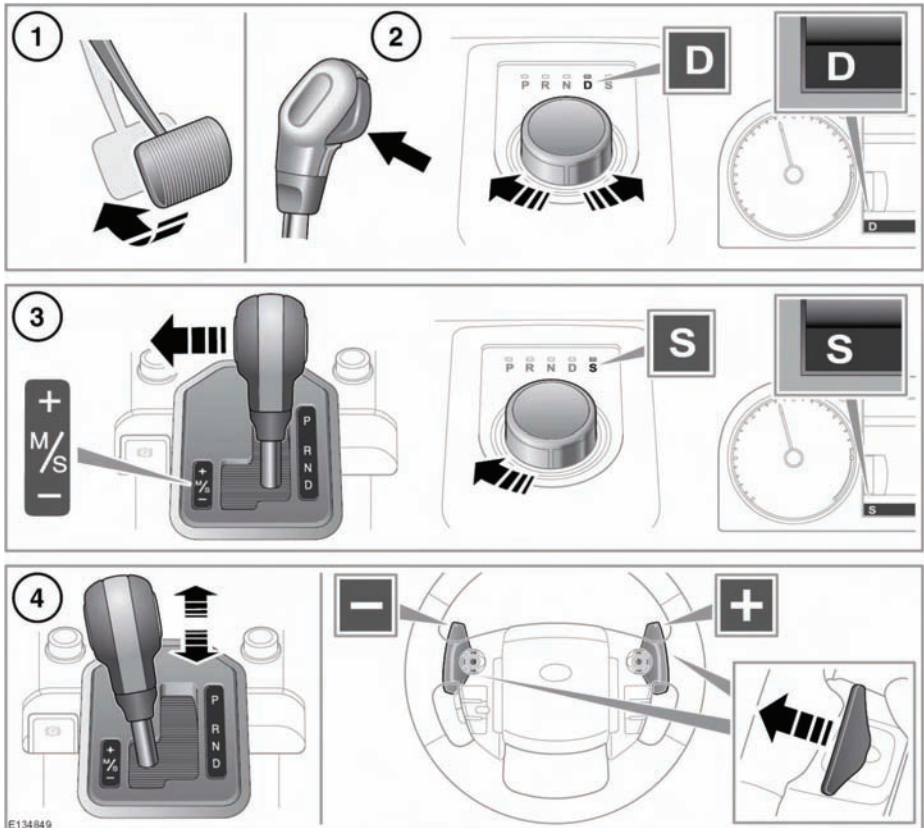


## AUTOMATIC TRANSMISSION

Depending on the vehicle specification, there is a choice of gear selection control. The gear selector lever operates in a forward, back and sideways direction. The rotary gear selector rotates in either direction. When the engine is started, the rotary selector will elevate out of the centre console in readiness for gear selection.



1. To select Drive (**D**) when the vehicle is stationary, first apply the foot brake.
2. With the selector lever, press in the release button and move the lever to **D**. If pressure is applied to the selector before the foot brake is applied, the selected gear may not be available. In this situation, remove pressure from the selector lever, ensure

that the foot brake is applied and select the required gear as described.

With the rotary selector, rotate to **D**. The paddle shifts can be used in this mode. Gear selection will revert to fully automatic if use of the paddles is not maintained.

**D** will appear in the instrument panel and the LED by the selector will illuminate.

3. To select sport mode with the selector lever, move the lever to the left.

With the rotary selector, press the selector down and rotate to **S**.

**S** will appear in the instrument panel and the LED by the selector will illuminate.

4. CommandShift™ can be used when **S** is selected.

With the selector lever, move the lever forward to move up a gear and back to move down gear. To return to the fully automatic sport mode, move the lever to **D** then back to **S**.

With the rotary selector, use the paddle shifts on the steering wheel for up and down shifts. Pull the left paddle (-) for downshifts and the right paddle (+) for upshifts. To return to the fully automatic sport mode, pull the right paddle for 2 seconds.

To return to drive mode move the selector back to the **D** position.

Should the transmission develop a fault, a warning message may be displayed in the message centre and only limited gears may become available. You should seek qualified assistance immediately.



**Park (P) should be engaged and the parking brake applied when the vehicle is stationary.**



**Always select P and switch off the ignition before leaving the vehicle.**



Never select **P** whilst the vehicle is in motion.



Never select Reverse (**R**) whilst the vehicle is in forward motion.



Never select a forward gear whilst the vehicle is in rearward motion.



Do not rev the engine, or allow it to run above normal idle speed, while selecting **D** or **R**, or whilst the vehicle is stationary with any gear selected.



Do not allow the vehicle to remain stationary for a sustained period, with a gear selected and the engine running. Always select **P** or **N** if the engine is to idle for a prolonged period.

## Rotary selector

**P** should normally be selected before switching off the engine. If any other gear is selected at turn off, the selector will move to **P** before retracting into the centre console.

If the engine is switched off with **N** selected, the system will wait for 10 minutes before selecting **P**. This time delay allows the vehicle enough time to be conveyed through a car wash.

If the selector fails to rotate to **P** when the engine is switched off, when the engine is next switched on, **P** must be selected before the engine will start.

In the event of a vehicle breakdown, the transmission will automatically select **P**. This prevents the vehicle from being towed on all four wheels. Therefore, vehicle recovery should only be undertaken by suitably qualified personnel.

If the rotary selector is obstructed, remove the obstruction and then start the engine. The selector should elevate as normal. If the selector fails to elevate, it can be used in the lowered position, but be aware that it will not automatically select **P** when the engine is switched off. **P** should be selected manually. The fault should be rectified by a Dealer/ Authorised Repairer at the earliest opportunity.