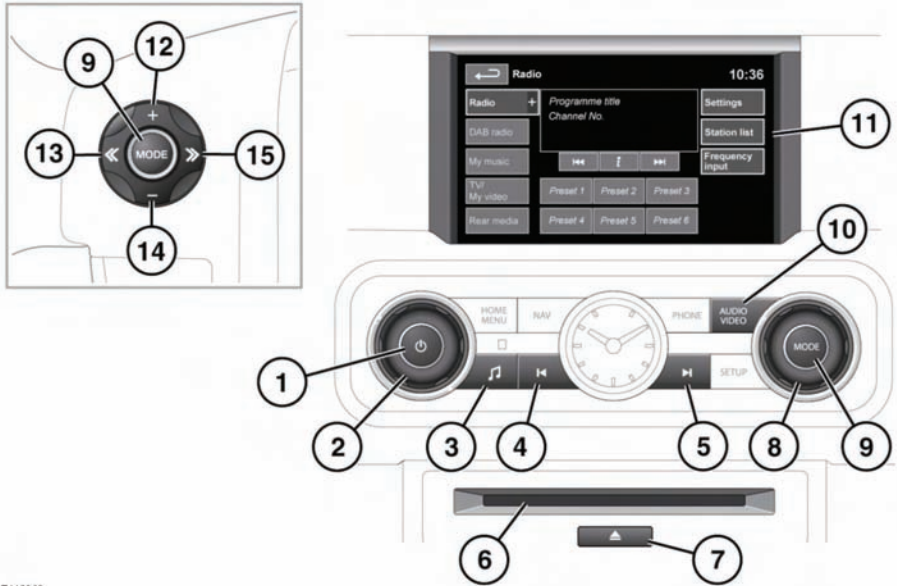


AUDIO/VIDEO CONTROLS



E140969



Sustained exposure to high sound levels (greater than 85 decibels) can damage your hearing.

1. Press to switch the audio system on/off.
Note: The audio system will operate with the ignition on or off, but will always switch off when the ignition is switched off. Switch the audio on again if required.
2. Rotate to adjust volume level.
Note: If volume is turned to zero while a CD is playing, the CD will pause play. Play will resume when a greater volume is selected.
3. Press to display the Audio settings.
4. Seek down:
Short press:
 - To auto seek down the frequency to the next radio station.
 - To select the previous track or start of

current track on chosen audio source - CD, MP3 etc.

- To select the previous TV channel on the channel list or the previous DVD chapter.

Long press:

- To activate radio manual seek mode.
- To skip backward through current audio source track.

With radio manual seek mode activated, further short presses will change the frequency in single decrements. A further long press will scan backward through the current waveband until the button is released.

5. Seek up:

Short press:

- To auto seek up the frequency to the next radio station.