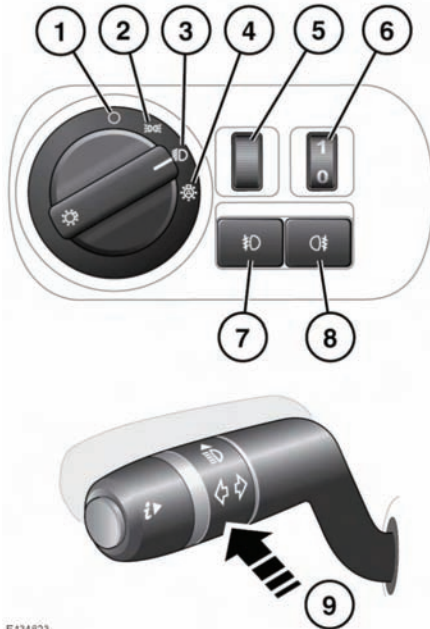


## LIGHTING CONTROL



E134823

1. Headlamps/side lamps off.
2. Side lamps on.
3. Low beam headlamps on.
4. Autolamps on: With the switch in this position and the ignition on, the side lamps, low beam headlamps and licence plate lamps illuminate automatically when the ambient light level is low. Auto high beam and Headlamp courtesy delay may also be activated (see below).
5. Dimmer control.
6. Halogen lamps height adjuster.
7. Front fog lamps on/off: When the front fog lamps are on, the front fog lamp warning lamp will illuminate.
8. Rear fog lamps on/off: When the rear fog lamps are on, the rear fog lamp warning lamp will illuminate.
9. High beam on/off/flash: When low beam headlamps are switched on, push the indicator stalk to change to high beam (the high beam warning lamp will illuminate).  
To flash the headlamps at anytime, briefly pull the indicator stalk and release it.  
**Note:** Do not use high beam where it may dazzle other road users.

## DAYTIME RUNNING LAMPS

With the lighting control in the Off position, Daytime running lamps will switch on automatically under the following conditions:

- The engine is running.
- The gear selector is out of Park (P).
- The parking brake is not applied (is released) - market dependent.



Unless required or prohibited by law, daytime running lamps can be disabled or enabled by a Land Rover Dealer/Authorised Repairer.

## HEADLAMP COURTESY DELAY

This feature operates whenever the lamps master switch is left in the Auto position, and the ignition is turned off. The headlamps will remain illuminated for up to 240 seconds.

**Note:** The time delay may be changed via the **Vehicle set-up menu**, see **56, INSTRUMENT PANEL MENU**.